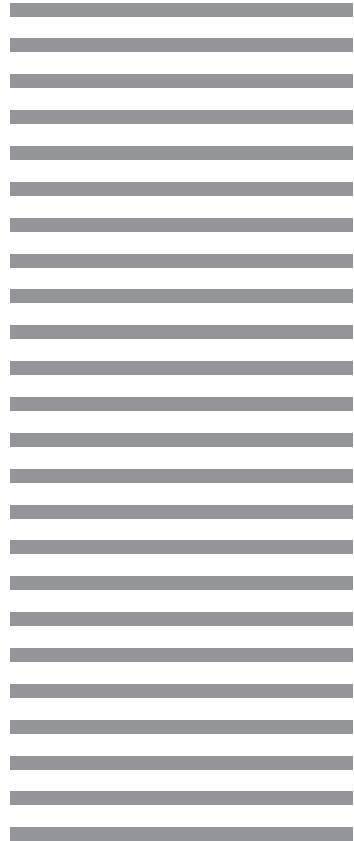




KONOIKE

DATA FILE

2017 vol.4



Overview

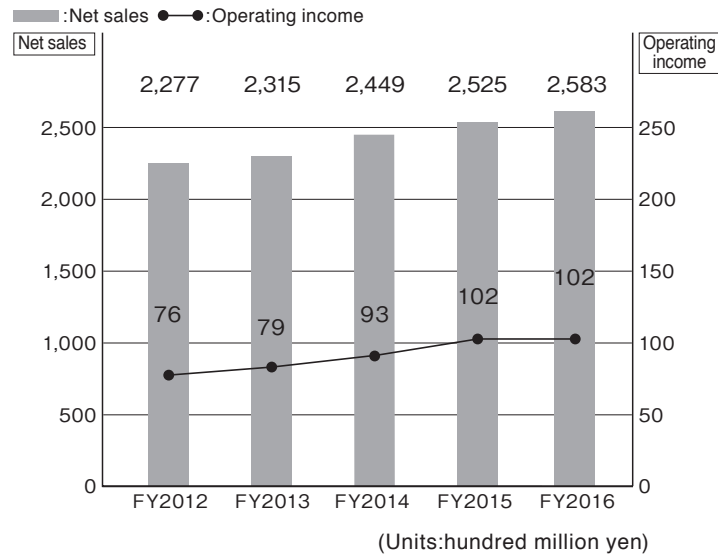
Osaka head office	4-3-9 Fushimimachi, Chuo-ku, Osaka 541-0044 TEL +81-6-6227-4600 (operator)
Tokyo head office	6-10-1 Ginza, Chuo-ku, Tokyo 104-0061 TEL +81-3-3575-5751(operator)
Incorporated	May 30, 1945
Representative	Tadahiko Konoike, Executive Director and President

Capital stock	1,710 million yen
Net sales	Group : 258.3 billion yen Konoike Transport alone : 187.3 billion yen [April 1, 2016 ~ March 31, 2017]
Employees	Group: Approx. 22,000 Konoike Transport alone: Approx. 14,000
Banks	Sumitomo Mitsui Banking Corporation, Bank of Mitsubishi Tokyo-UFJ, Mizuho Bank

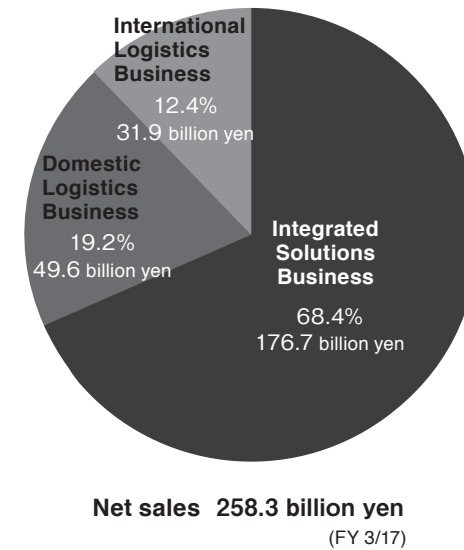
(As of October 1, 2017)

Consolidated financial highlights

[Net sales and Operating income]



[Net sales by business segment (Group)]



Directors / Officers

Position	Name	Assigned Duty
Directors		
Director and Chairman	Takashi Tsuji	
Executive Director and President	Tadahiko Konoike	
Executive Director and Vice President	Tadayoshi Shimizu	
Director and Vice President	Yoshinori Mizutani	Executive General Manager, Business Development Division
Director and Managing Executive Officer	Tadatsugu Konoike	Deputy Executive General Manager, International Business Division/Deputy Executive General Manager, Strategic Transformation Division
External Director	Kishichiro Amae	
External Director	Naoki Kimura	

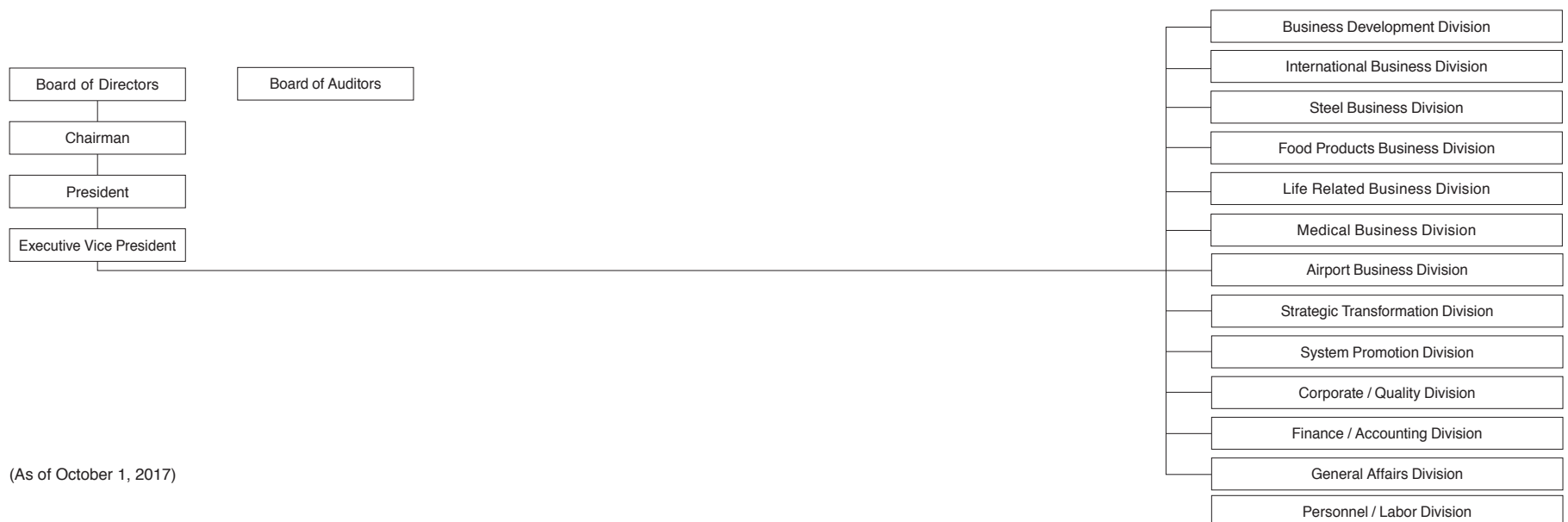
Audit & supervisory Board Member		
Full-time Audit & Supervisory Board Member	Akio Fujii	
Full-time Audit & Supervisory Board Member	Hiroshi Yabumoto	
External Audit & Supervisory Board Member	Haruo Funabashi	
External Audit & Supervisory Board Member	Hideaki Doumichi	

Executive Officers		
Managing Executive Officer	Takao Sato	Executive General Manager, Strategic Transformation Division
Managing Executive Officer	Toshikata Kawashima	Executive General Manager, Food Products Business Division
Managing Executive Officer	Eiji Nakayama	Executive General Manager, Life Related Business Division
Managing Executive Officer	Mitsuhiro Nakatani	Executive General Manager, Finance/Accounting Division/ Executive Director, Konoike Business Management Co., Ltd.
Managing Executive Officer	Yoshikazu Tabo	Executive General Manager, Airport Business Division/Deputy Executive General Manager, Business Development Division
Managing Executive Officer	Tetsuro Takeshima	Executive General Manager, Personnel / Labor Division
Managing Executive Officer	Katsutoshi Kuwabara	Deputy Executive General Manager, Strategic Transformation Division
Managing Executive Officer	Mitsuru Tsukakoshi	Executive General Manager, International Business Division

Position	Name	Assigned Duty
Executive Officer	Kazuki Uenoyama	Deputy Executive General Manager, International Business Division (Director of Operations in Vietnam) / Executive Director, Konoike-Sotus Venture Co., Ltd.
Executive Officer	Ichiro Nishio	Deputy Executive General Manager, Corporate/Quality Division (In charge of Environment)
Executive Officer	Kazuchika Fukuoka	Executive General Manager, Corporate/Quality Division
Executive Officer	Makoto Kanzaki	Deputy Executive General Manager, Life Related Business Division
Executive Officer	Atsushi Kato	Executive General Manager, General Affairs Division/ In charge of Risk Management
Executive Officer	Minoru Amano	Executive General Manager, Medical Business Division/ Deputy Executive General Manager, Business Development Division/Executive Director, Carina Medical Database Pvt. Ltd.
Executive Officer	Shigemi Takeda	Deputy Executive General Manager, Steel Business Division (Director of Operations in Thailand)/Executive Director, Konoike J.Transport (Thailand) Co.,Ltd.
Executive Officer	Koji Shoda	Executive General Manager, Steel Business Division
Executive Officer	Shingo Yoshida	Deputy Executive General Manager, Food Products Business Division
Executive Officer	Hiroyasu Katayose	Deputy Executive General Manager, Food Products Business Division
Executive Officer	Hiroaki Kobayashi	Executive General Manager, System Promotion Division
Executive Officer	Hiroshi Ikeda	Deputy Executive General Manager, Food Products Business Division
Executive Officer	Katsuhiro Hashizume	Deputy Executive General Manager, Life Related Business Division
Executive Officer	Akihiko Furukawa	Deputy Executive General Manager, Airport Business Division
Executive Officer	Atsuya Sakamoto	Deputy Executive General Manager, Steel Business Division
Executive Officer	Osamu Fujiwara	General Manager, Corporate Strategy Office
Executive Officer	Shigeo Nakamura	Deputy Executive General Manager, International Business Division (Director of Operations in India)

(As of October 1, 2017)

Organization chart



(As of October 1, 2017)

Domestic branches

Name	Address	Phone number
Osaka Harbour Branch	2-1-23, Chikko, Minato-ku, Osaka 552-0021	TEL 06-6572-3017
International Logistics (Osaka) Branch	2-1-23, Chikko, Minato-ku, Osaka 552-0021	TEL 06-6572-2192
International Logistics (Tokyo) Branch	1-9-13, Nihonbashihoncho, Chuo-ku, Tokyo 103-0023	TEL 03-6738-2850
Kansai Branch	3-7-9, Shimaya, Konohana-ku, Osaka 554-0024	TEL 06-6466-3701
Wakayama Branch	3-8-41, Matsuenaka, Wakayama, Wakayama 640-8423	TEL 073-455-4101
Chiba Branch	5-10-14, Suehiro, Chuo-ku, Chiba 260-0843	TEL 043-263-0171
Kashima Branch	1520-4, Izumigawa, Kashima, Ibaraki 314-0015	TEL 0299-82-7511
Nishi-Nihon Branch	1-15-15, Nakatsu, Kita-ku, Osaka 531-0071	TEL 06-6292-5861
Tokai Branch	3-7-12, Koraku, Minato-ku, Nagoya 455-0014	TEL 052-651-3306
Shizuoka Branch	25-1, Okatoume, Yaizu, Shizuoka 452-0013	TEL 054-620-9655
Kanto Chuo Branch	3-18-10, Motoasakusa, Taito-ku, Tokyo 111-0041	TEL 03-5827-1761
Higashi-Nihon Branch	3-18-10, Motoasakusa, Taito-ku, Tokyo 111-0041	TEL 03-5830-5031
Kita-Nihon Branch	3-4-7, Yoshioka Higashi, Taiwa-cho, Kurokawa-gun, Miyagi 981-3627	TEL 022-344-0730
Chugoku & Kyushu Branch	1642, Himekatamachi, Tosu-shi, Saga 841-0023	TEL 0942-81-3896
Temperature Controlled Distribution Branch	3-18-10, Motoasakusa, Taito-ku, Tokyo 111-0041	TEL 03-5830-8301
Kansai Chuo Branch	1-15-15, Nakatsu, Kita-ku, Osaka 531-0071	TEL 06-6292-8781
Kanto Branch	5-10-14, Suehiro, Chuo-ku, Chiba 260-0843	TEL 043-261-4421

Domestic group companies



ASR Recycling Kashima Co.,Ltd.	3 Hikari, Kashima, Ibaraki 314-0014	TEL 0299-84-2063
Eco Innovation Inc.	3 Hikari, Kashima, Ibaraki 314-0014	TEL 0299-84-3911
Otori Tech Co., Ltd.	3 Hikari, Kashima, Ibaraki 314-0014	TEL 0299-82-4558
Konoike Express Co., Ltd.	2-1 Sakaedani, Wakayama, Wakayama 640-8441	TEL 073-451-4151
Konoike Engineering Co.,Ltd.	1-36-1 Kanseicho, Minato-ku, Nagoya 455-0066	TEL 052-651-7126
Chiyoda Inspection Industries Co.,Ltd.	1-1-24 Shimaya, Konohana-ku, Osaka 554-0024	TEL 06-6465-1275
Konoike Corporate Service Co., Ltd.	3-10-29 Shimaya, Konohana-ku, Osaka 554-0024	TEL 06-6463-8110
Kyushu Sanko Unyu Co., Ltd.	2-20-3 Ryutsudanchi, Minami-ku, Kumamoto 862-8635	TEL 096-377-2135
Konoike Medical Co., Ltd.	1-6-4 Yurakucho, Chiyoda-ku, Tokyo 100-0006	TEL 03-3580-3860
NKS Holding Co.,Ltd.	7-16-14 Ginza, Chuo-ku, Tokyo 104-0061	TEL 03-6260-6481
Japan Airport Service Co.,Ltd.	154-4 Furugome Komae, Narita, Chiba 282-0004	TEL 0476-32-5881
Airport Terminal Service Co.,Ltd.	1-4-3 Igodai, Narita, Chiba 286-0035	TEL 0476-37-4017
NAB Corporation.	1001-1282 Honsanritsuka, Narita, Chiba 286-0118	TEL 0476-33-4911
J Friendly, Inc.	1001-649 Honsanritsuka, Narita, Chiba 286-0118	TEL 0476-40-4322
K Ground Service Co.,Ltd.	2-21 Rinkuoraita, Izumisano, Osaka 598-0048	TEL 072-463-8571
K Sky Co.,Ltd.	1 Senshukukonaka, Tajiri, Sennan, Osaka 549-0011	TEL 072-455-3373
K Ground Expert Co.,Ltd.	2-21 Rinkuoraita, Izumisano, Osaka 598-0048	TEL 072-463-0155
KPS Co., Ltd.	5-6 Rinkuoraita, Izumisano, Osaka 598-0048	TEL 072-463-4600
Konoike Air Port Service Co.,Ltd.	4-22-3 Kamata, Otakau, Tokyo 144-0052	TEL 03-6424-5182
Kanriku Co.,Ltd.	Takamatsu Higashi Factory Park, 121-20 Showa, Sanuki, Kagawa 769-2304	TEL 0879-24-9100
Konohana Transport Co.,Ltd.	1-24 Kaminomiyacho, Nakamura-ku, Nagoya 453-0043	TEL 052-481-3221
Japan Airways Co., Ltd.	6-10-1, Ginza, Chuo-ku, Tokyo 104-0061	TEL 03-3569-3270
Maekawa Transport Co.,Ltd.	2-5-2, Wakaba, Mihama-ku, Chiba 261-0014	TEL 043-213-6611
Konoike Shipping Co., Ltd.	2-3-1, Shinkawa, Chuo-ku, Tokyo 104-0033	TEL 03-6738-2960
Sano Unyu Co., Ltd.	3-1-16 Kaigandori, Chuo-ku, Kobe 650-0024	TEL 078-391-0092
Nichiun Co., Ltd.	4-23 Kaigandori, Naka-ku, Yokohama 231-0002	TEL 045-201-8951
Konoike Business Management Co., Ltd.	4-3-9 Fushimimachi, Chuo-ku, Osaka 541-0044	TEL 06-6227-4634

(As of October 1, 2017)



North and Central America

[U.S.A.]

Konoike-Pacific California, Inc.

1420 Coil Avenue Wilmington, CA U.S.A.
TEL 1-310-518-1000

[Business Details]

- ① Frozen and Chilled warehouse
- ② Transloading import and export cargos
- ③ United States Department of Agriculture (USDA) Inspection
- ④ Container drayage, truck distribution and brokerage.
- ⑤ Transloading export cargos (Direct access to 2 major railway companies. (UP/BNSF))

[staff] 81

Konoike Transport & Engineering (USA), Inc.

1420 Coil Avenue Wilmington, CA U.S.A.
TEL 1-310-513-1500

[Business Details]

- ① NVOCC business
- ② Intermodal logistics and installation of heavy mechanical equipments, etc.

[staff] 7

Konoike-General, Inc.

8457 Eastern Ave Building "B-C" Bell Gardens, CA U.S.A.
TEL 1-562-806-2445

[Business Details]

- ① Frozen and Chilled warehouse
- ② Transloading import and export cargos
- ③ United States Department of Agriculture (USDA) Inspection

[staff] 10

Konoike-E Street, Inc.

901 East E Street, Wilmington, CA U.S.A.
TEL 1-310-233-7300

[Business Details]

- ① Frozen and Chilled warehouse
- ② United States Department of Agriculture (USDA) Inspection

[staff] 14

[Mexico]

Konoike Mexico S.A. de C.V.

Prolongacion Gonzalez Gallo, #1897, Int4. Col. San Sebastianito, Tlaqueaque, Jalisco, MEXICO
TEL 52-33-3797-6222

[Business Details]

- ① NVOCC business
- ② Intermodal logistics and installation of heavy mechanical equipments, etc.

[staff] 18

East Asia

[China]

Konoike Transport & Engineering (H.K.) Ltd.

Room 1510A, 15/F., Tower 2, China Hong Kong City, 33 Canton Road, Tsim Sha Tsui, Kowloon, HONG KONG
TEL 852-2735-7313

[Business Details]

- ① Operation business of import and export marine cargos (NVOCC business of dispatch and delivery from Hong Kong and Huanan Area)
- ② Operation business of import and export air cargos
- ③ Cross border truck business between Hong Kong and Guang dong Province
- ④ Warehouse storage, distribution business in Hong Kong and Guang dong Province
- ⑤ Transportation and installation of mechanical equipments, etc
- ⑥ Operation of transportation between 3 countries and B/L issuance business

[staff] 27

Konoike Logistics (Shenzhen) Co., Ltd.

301, 3/F., Met Warehouse Bldg., A, No.32, Shihua Rd, Futian Free Trade Zone, Shenzhen, CHINA
TEL 86-755-8359-9017

[Business Details]

- ① Operation of import and export cargos via Futian-ba oshuigu, Shenzhen
- ② Warehouse business, distribution processing, distribution business
- ③ NVOCC business from ports of Guang don Province
- ④ Other business that accompanies distribution in areas in Guang dong Province

[staff] 14

• Guangzhou Branch

Room 15G, Gao Sheng Building 109 Titu Road West Guangzhou, CHINA
TEL 86-20-3879-1927

Qingdao Cosco Konoike Logistics Co., Ltd.

No.18 Gao Chang Road Qingdao High Scientific & Technical Industrial Garden, CHINA
TEL 86-532-8870-1607

[Business Details]

- ① Warehouse business at part of bonded area
- ② Container vanning and devanning work
- ③ Marine products processing business
- ④ NVOCC business
- ⑤ Forwarding of import and export cargos
- ⑥ Ground transportation business

[staff] 41

Konoike Logistics (Shanghai) Co., Ltd.

• Waigaoqiao Warehouse

No.50 Warehouse No.389 Ying Lun Road Waigaoqiao Free Trade Zone, Shanghai, CHINA
TEL 86-21-5048-2833

• Puxi Office

Shengbang International Tower Room No.2201 No.1318 Sichuan North Road, Shanghai, CHINA
TEL 86-21-6309-1118

• Hangzhou Branch

Room 805, Zhejiang Yuan Tong Building, No.511 Yan An Road, Hangzhou, CHINA
TEL 86-571-8510-8637

• Suzhou Branch

Room No.1208 Suzhou Jinhe International Tower No.35 Shishan Road, Suzhou, CHINA
TEL 86-512-6807-2938

• Wuxi Branch

Unit A BD1, Mapletree Wuxi Logistics Park No.8 Huayu-4rd Xin-Qu Wuxi City, CHINA
TEL 86-510-8520-3021

• Dalian Branch

19F, 147 Zhongshan Road, Xigang District, Dalian China
TEL 86-411-8360-1778

• Tianjin Branch

Room 1221, Smart Valley Building, 218 Hongqi Road, Nankai District, Tianjin China
TEL 86-22-8707-6199

[Business Details]

- ① Warehouse business
- ② NVOCC business
- ③ Cargo transportation business
- ④ Ground transportation business
- ⑤ Custom clearance business
- ⑥ Trading business
- ⑦ Distribution processing and consulting business

[staff] 57

Konoike Asia (Jiangsu) Co., Ltd.

No.9 Haitian Road, Changshu Advanced Material Industrial Park, Jiangsu, CHINA
TEL 86-512-5219-5058

[Business Details]

- ① Warehouse Business
- ② NVOCC business
- ③ Truck distribution
- ④ Distribution processing and Consulting Business
- ⑤ Installation of mechanical, Maintenance in factory

[staff] 34

BEL International Logistics Ltd.

RM8A, 8/F, Mita Centre, 552-566 Castle Peak Road, Kwai Chung, New Territories, Hong Kong
TEL 852-2411-8337

[Business Details]

- ① Forwarding of import and export cargos
- ② NVOCC business
- ③ Warehouse business
- ④ Transportation business

[staff] 50

BEL International Logistics Ltd. (Shanghai)

Room 1102-1103, 11/F, Global New Times Plaza #1666

Sichuan Road (North) Shanghai, CHINA

TEL 86-21-6122-5488

[Business Details]

- ① Forwarding of import and export cargos
- ② NVOCC business
- ③ Warehouse business
- ④ Transportation business

[staff] 20

BEL International Logistics Ltd. (Taiwan)

Floor 9-2, No.577 Linsen North Road, Taipei, CHINA

TEL 886-2-2598-7464

[Business Details]

- ① Forwarding of import and export cargos
- ② NVOCC business
- ③ Warehouse business
- ④ Transportation business

[staff] 8

BEL Supply Chain Solution Ltd.

7/F, Mita Centre, 552-566 Castle Peak Road, Kwai Chung, N.T.

Hong Kong

TEL 852-3468-6678

[Business Details]

- ① Warehouse business
- ② Transportation business

[staff] 13

Beijing Rep. Office

Room No. 809 Lucky Tower Block B 3 Dong San Huan

Bei Road Chaoyang Dist, Beijing, CHINA

TEL 86-10-6461-6429

[Business Details]

- ① Communication and inspection about international complex transportation

[staff] 3

■ Asia - South East**[Philippines]****PKI Manufacturing & Technology, Inc.**

Lot 14, Phase 1-A, SSB First Philippines Industrial Park

Sto. Tomas, Batangas, PHILIPPINES

TEL 63-43-405-6388/6389

- ① Contract operations
- ② Worker dispatch business

[staff] 35

[Indonesia]**PT. Konoike Transport Indonesia**

Wisma Nugra Santana 13th Floor Jl. Jend. Sudirman Kav.7-8,

Jakarta, INDONESIA

TEL 62-21-578-52350

[Business Details]

- ① Forwarding of import and export of ocean and air cargos
- ② Custom clearance business
- ③ NVOCC business
- ④ Transportation and installation of mechanical equipments, etc.
- ⑤ Engineering
- ⑥ Warehouse business

[staff] 21

[Viet Nam]**Konoike Vinatrans Logistics Co., Ltd.**

18-A Luu Trong Lu, District 7, Ho Chi Minh City, VIETNAM

TEL 84-28-3872-2845

• Ho Chi Minh VSIP Bonded Warehouse

15 Huu Nghi Ave, Vietnam Singapore Industrial Park, Thuan

An District., Binh Duong Province, VIETNAM

TEL 84-274-376-7484

• Hai Duong Branch / Warehouse

C4 Phuc Dien Industrial Zone, Cam Giang, Hai Duong

Province, VIETNAM

TEL 84-220-354-6575

• Amata Office

#01.1st Fl. Amata Service Park, Amata Road Amata

Industrial Park Bien Hoa City, Dong Nai Province, VIETNAM

TEL 84-251-393-6262

• Hanoi Branch

18FL, Icon 4 Building, 243A De La Thanh Street, Lang

Thuong, Dong Da, Hanoi, VIETNAM

TEL 84-24-2220-9498

[Business Details]

- ① Frozen warehouse
- ② Operation of marine cargo (general business concerning marine cargo including marine transportation, custom clearance, etc.)
- ③ Truck business (refrigerated car, container dray service)
- ④ Operation of bonded warehouse
- ⑤ Supporting trading office business

[staff] 650 (Total)

Anpha-AG Joint Stock Company

Lot E02, Road No.2 Long Hau Industrial Park, Long An Province, VIETNAM

TEL 84-28-3873-4395

[Business Details]

- ① Frozen and Chilled warehouse

[staff] 98

Vinako Forwarding Co., Ltd.

Unit 02-03-05 Vietnam Airlines Building-The Southern Office 49

Truong Son Str., Tan Binh District, Ho Chi Minh City, VIETNAM

TEL 84-28-3844-6252

• Hanoi Branch

Room No.304 Dmc Tower, 535 Kim Ma Street, Ba Dinh

District, Hanoi, VIETNAM

TEL 84-24-2220-9545

[Business Details]

- ① Operation business of air cargo
- ② Custom clearance business
- ③ Domestic transportation business
- ④ Packing business

[staff] 61 (Total)

BEL International Logistics Vietnam Company Ltd.

7/F, 14 Truong Quyen, Ward 06, Dist 03, Ho Chi Minh City,

Vietnam

TEL 84-28-3820-1128

[Business Details]

- ① Forwarding of import and export cargos
- ② NVOCC business
- ③ Warehouse business
- ④ Transportation business

[staff] 13

[Cambodia]

Konoike Asia (Cambodia) Co.,Ltd.

B-Ray Tower 6F Preah Norodom Blvd, Sangkat Tonle Bassac, Khan Chamkamorn, Phnom Penh, CAMBODIA

TEL 855-23-987-571

[Business Details]

- ① Forwarding of import and export of ocean and air cargos
 - ② Warehouse business
 - ③ Truck distribution
- [staff] 14

[Singapore]

Konoike Transport & Engineering (S) Pte Ltd.

10 Anson Road, #20-02 International Plaza, SINGAPORE

TEL 65-6220-0010

[Business Details]

- ① Forwarding of import and export of ocean and air cargos
 - ② Custom clearance business
 - ③ NVOCC business
 - ④ Transportation and installation of mechanical equipments, etc.
 - ⑤ Engineering
 - ⑥ Warehouse business
- [staff] 7

[Thailand]

Konoike J.Transport (Thailand) Co.,Ltd.

065/1 Sukhumvit Road, Tapradu, Muang-Rayong, Rayong, Thailand

TEL 66-38-61-1703

[Business Details]

- ① Heavy cargo Transportation business
- [staff] 189

Konoike Asia (Thailand) Co., Ltd.

3656/73 Green Tower, 22nd Fl, Rama 4 Rd., Klongton,

Klongtoey, Bangkok, THAILAND

TEL 66-2-367-3671

[Business Details]

- ① Forwarding of import and export cargo
 - ② Truck distribution
- [staff] 52

Konoike Cool Logistics (Thailand) Co., Ltd.

335/29 Moo 9 Bangna-Trad Rd.(Km.19), Bangchalong, Banglee, Samutprakarn, THAILAND

TEL 66-2-337-3013

[Business Details]

- ① Frozen and Chilled warehouse
- [staff] 67

Konoike Express (Thailand) Co., Ltd.

335/29 Moo 9 Bangna-Trad Rd.(Km.19), Bangchalong, Banglee, Samutprakarn, THAILAND

TEL 66-2-337-3023

[Business Details]

- ① Frozen & Child & Dry cargo Transportation business
- [staff] 67

Konoike-Sotus Venture Co., Ltd.

10/66 (308), 3rd Floor, The Trendy Building, Soi Sukhumvit 13, Klongtoey Nua, Sub-district, Wattana District, Bangkok, THAILAND

TEL 66-2-168-7260

[Business Details]

- ① Business/subsidiary establishment and planning, investment and business support
 - ② Consulting
 - ③ Accounting and personnel management
- [staff] 16

[Myanmar]

Konoike Myanmar Co., Ltd.

Lot No.C-20, Thilawa SEZ Zone A, Yangon, MYANMAR

TEL 95-1-230-9144/9145/9146

[Business Details]

- ① International Forwarding
 - ② Custom Clearance Related Service
 - ③ NVOCC business
 - ④ Engineering-related Services such as Installation and/or Assemble of Facilities
 - ⑤ Warehousing
 - ⑥ Packing Processing Service in own Warehouse
 - ⑦ Trucking
 - ⑧ Supporting Services for Industrial Processing in Customer's Warehouse
 - ⑨ Any other business incidental to the foregoing, which may be approved by the Management committee
- [staff] 32

■ South Asia

[Bangladesh]

Konoike-EURO Logistics (Bangladesh) Ltd.

House No.162, Eastern Road, Lane #3, New Dohs,

Mohakhali, Dhaka, BANGLADESH

TEL 880-2-885-0721

[Business Details]

- ① Forwarding of import and export cargo
- [staff] 6

[India]

Joshi Konoike Transport & Infrastructure Pvt.Ltd.

M-26, Main Market, Greater Kailash-II, New Delhi-110048, INDIA

TEL 91-11 494 88 900

[Business Details]

- ① Container Train Operator
- [staff] 3

Konoike Asia (India) Pvt. Ltd.

Unit No. 114, 1st Floor, Sector 54, Suncity Business Tower, Golf Course Road, Gurgaon, INDIA

TEL 91-124-4380273,74

[Business Details]

- ① Forwarding of import and export cargo
 - ② Truck distribution
- [staff] 15 (Total)

Carna Medical Database Pvt. Ltd.

518 & 521, 5th Floor MGF Metropolis Mall, MG Road, Gurgaon, Haryana, INDIA

TEL 91-124-430-9635

[Business Details]

- ① Establishment and distribution of a medical supply database
 - ② Establishment of a logistics network utilizing the medical supply database
 - ③ Consultant services utilizing the medical supply database
- [staff] 10

Warehouses / Centers (Domestic)



Name	Structure	Dimensions (m ²)					
		Dry	Chilled	Frozen	Automated	Temp-Cntl	Total
Hokkaido							
Chitose Warehouse 770-6 Kitashinano, Chitose, Hokkaido 066-0075 TEL 0123-23-5125	Steel frame 1 story	2,500					2,500
Chitose No. 2 Distribution Center 1034-10 Kamiosatsu, Chitose, Hokkaido 066-0077 TEL 0123-27-5121	Steel frame 1 story	700	700			2,200	3,600
Sapporo Temperature Controlled Distribution Center 1-706-1 Shinkonishi, Ishikari, Hokkaido 061-3241 TEL 0133-73-8661	Steel frame 1 story		700	300			1,000
	Steel frame 2 story	1,200				900	2,100
	Steel frame 2 story		900	1,200			2,100
	Steel frame 2 story		2,900	500		1,300	4,700
Tohoku							
Sendai Temperature Controlled Distribution Center 9-5-2, Narita, Tomiya, Miyagi, 981-3341 TEL 022-351-0911	Steel frame 3 story		4,100	6,400		1,200	11,700
Miyagi Distribution Center 3-4-7 Yoshioka Higashi, Taiwa-cho, Kurokawa, Miyagi 981-3627 TEL 022-345-1191	Steel frame 1 story	600					600
	Steel frame 5 story	8,000	200				8,200
Kanto							
Mito Distribution Center 1249, Kasamatsu, Mukoyama, Naka, Ibaraki 311-0102	Steel frame 1 story	800					800
Makuhari Distribution Center (Bonded) 2-3-1 Shibazono, Narashino, Chiba 275-0023 TEL 047-408-9661	RC 3 story	4,100	1,100	400		3,100	8,700
Maihama Distribution Center 10-9 Chidori, Urayasu, Chiba 279-0032 TEL 047-316-3230	Steel frame 5 story	3,500				6,600	10,100
Chiba Minami Toke Warehouse 1-6-10 Onodai, Midori-ku, Chiba 267-0056 TEL 043-295-6091	Steel frame 2 story	4,300					4,300
Tonegawa Distribution Center 358-3 Nobecho, Tatebayashi, Gunma 374-0047 TEL 0276-72-4321	Steel frame 1 story	3,000	700				3,700
	Steel frame 2 story	2,000					2,000
Shibukawa Distribution Center 280 Handanakahara, Shibukawa, Gunma 377-0004 TEL 0279-23-8940	Steel frame 1 story	1,300					1,300

Name	Structure	Dimensions (m ²)					
		Dry	Chilled	Frozen	Automated	Temp-Cntl	Total
Kitakanto Distribution Center 3027-5 Maigi-yokonehara, Chiyodamachi, Ora, Gunma 370-0504 TEL 0276-70-5141	Steel frame 2 story	42,400					42,400
Kanto Temperature Controlled Distribution Center 300-3 Fukawa, Sugitomachi, Kitakatsushika, Saitama 345-0012 TEL 0480-36-5525	Steel frame 3 story		7,200	7,100	9,800PL (Frozen)		14,300
Urawa Temperature Controlled Distribution Center 6-11-5 Shirahata, Minami-ku, Saitama 336-0022 TEL 048-864-8911	RC 4 story	200	3,200				3,400
Urawa Temperature Controlled Distribution Center [Koshigaya Office] 2-3-4 Ryutsudanchi, Koshigaya, Saitama 343-0824 TEL 048-985-4321	Steel frame 2 story		1,900	1,000			2,900
	Steel frame 2 story	4,000					4,000
Ome Distribution Center 3-8-4 Imai, Ome, Tokyo 198-0023 TEL 0428-32-4551	Steel frame 5 story	9,100	200				9,300
Kunitachi Distribution Center 2-6-2 Izumi, Kunitachi, Tokyo 186-0012 TEL 042-580-1071	RC 6 story	21,700					21,700
Oi Distribution Center (Bonded) 4-7-7 Tokai, Ota-ku, Tokyo 143-0001 TEL 03-3790-0091	RC 5 story	9,100				800	9,900
Daikoku Distribution Center (Bonded) 22 Daikoku futo, Tsurumi-ku, Yokohama 230-0054 TEL 045-510-2222	RC 5 story (part of the 3rd floor)	4,300					4,300
Kurami Warehouse 694-3 Kurami, Samukawamachi, Koza, Kanagawa 253-0101 TEL 0467-75-3672	Steel frame 2 story		1,100				1,100
Sagami Food Distribution Center 1435-1 Kaneda, Atsugi, Kanagawa 248-0807 TEL 046-297-7107	RC 2 story		4,300	3,800			8,100

*Temperature controlled warehouse: Warehouse that is able to maintain a certain temperature (10~20°C)

(As of October 1, 2017)



Name	Structure	Dimensions (m ²)					
		Dry	Chilled	Frozen	Automated	Temp-Cntl	Total
Nishitama Warehouse 182, Fujiyamakuriharashinden, Mizuhomachi, Nishitama, Tokyo 190-1204 TEL 042-556-1935	RC 3 story	10,700				2,600	13,300
Atsugi Distribution Center 2500-1 Toda, Atsugi, Kanagawa 243-0023 TEL 046-229-6463	RC 5 story RC 5 story RC 5 story	11,500 16,400 13,000	1,600	500			13,600 16,400 13,000
Atsugi Temperature Controlled Distribution Center 4070-1 Nakatsu-sakuradai, Aikawamachi, Aiko, Kanagawa 243-0303 TEL 046-285-2180	RC 8 story		1,600	8,800	3,400PL (Chilled)		10,400
Kanagawa Chuo Distribution Center 4009-3 Nakatsu-sakuradai, Aikawamachi, Aiko, Kanagawa 243-0300 TEL 046-280-4333	RC 6 story	13,700					13,700
Kanagawa Ayase Distribution Center 8-27-1 Fukayakami, Ayase, Kanagawa 252-1108 TEL 0467-71-5605	Steel frame 3 story	11,300			61,000PL (Dry)		11,300
Nigata Distribution Center (Bonded) 5-1923-13 Higashiko, Seiromachi, Kitakanbara, Niigata 957-0101 TEL 025-256-1601	Steel frame 1 story	2,300	900				3,200
Tokai							
Shizuoka Temperature Controlled Distribution Center 640-2 Yawata, Fujieda, Shizuoka 426-0009 TEL 054-643-4321	Steel frame 1 story		1,500	1,000			2,500
Fukuroi Distribution Center 153-1 Icchoda Oyama, Fukuroi, Shizuoka 437-0056 TEL 0538-41-3617	Steel frame 2 story	24,300			10,000PL (Dry)		24,300
Nagaizumi Distribution Center 359 Kaminagakubo, Nagaizumicyo, Suntogun, Shizuoka 411-0935 TEL 055-989-2104	Steel frame 2 story	6,200	9,000	300		10,700	26,200
Nagoya Temperature Controlled Distribution Center (Bonded) 2-201-2 Fujimae, Minato-ku, Nagoya 455-0855 TEL 052-303-5813	Steel frame 3 story		4,300	4,200			8,500

Name	Structure	Dimensions (m ²)					
		Dry	Chilled	Frozen	Automated	Temp-Cntl	Total
Obu Distribution Center 1-1 Toyama, Kitasaki-Machi, Obu, Aichi 474-0001 TEL 0562-38-6641	Steel frame 4 story (1st and 2nd floor)	21,900	300				22,200
Kansai							
Shiga Distribution Center 1601-1 Oshinohara, Yasu, Shiga 520-2313 TEL 077-587-3300	Steel frame 3 story	10,300					10,300
Kyoto Joyo Distribution Center 1-2 Tono-ikenouchi, Joyo, Kyoto 610-0111 TEL 0774-52-5151	Steel frame 2 story	30,000					30,000
Ajigawa Warehouse (Bonded) 1-5-34 Ishida, Minato-ku, Osaka 552-0006 TEL 06-6573-2721	RC 2 story RC 3 story	3,800 3,200				5,500	3,800 8,700
Harbour Transportation Department L-1 Storage sheds 8-2-31 Nankonaka, Suminoe-ku, Osaka 559-0033 TEL 06-6612-3421	Steel frame 1 story	2,800					2,800
Nanko R Distribution Center (Bonded) 2-3-59 Nankokita, Suminoe-ku, Osaka 559-0034 TEL 06-6614-1288	Steel frame 3 story	13,500					13,500
Osaka General Distribution Center (Bonded) 7-4-110 Nankonaka, Suminoe-ku, Osaka 559-0033 TEL 06-6613-1851	RC 3 story	10,800					10,800
Suminoe Distribution Center 2-8-76 Logiport Osaka Shibatani, Suminoe-ku, Osaka 559-0021 TEL 06-6115-3380	RC 4 story (part of 3rd, 4th floor)	27,200					27,200
Osaka Temperature Controlled Distribution Center 2-2-6 Mishimae, Takatsuki, Osaka 569-0835 TEL 072-677-7755	RC 5 story		2,000	4,300			6,300
Osaka Hokko Temperature Controlled Distribution Center (Bonded) 1-6-10 Hokkoshiratsu, Konohana-ku, Osaka 554-0041 TEL 06-6467-1800	Steel frame 4 story		12,700	6,000	15,000PL (Frozen/ Temp.control)		18,700

*Temperature controlled warehouse: Warehouse that is able to maintain a certain temperature (10~20°C)



Name	Structure	Dimensions (m ²)					
		Dry	Chilled	Frozen	Automated	Temp-Cntl	Total
Osaka Hokko Distribution Center Prologis park-maishimall, 2-1-37 Hokkoryokuchi, Konohana-ku, Osaka 554-0042 TEL 06-4804-5666	Steel frame 7 story (1st, 2nd and 3rd floor)	33,300	500			1,600	35,400
Konohana Distribution Center 2-5-31 Hokko, Konohana-ku, Osaka 554-0033 TEL 06-6461-1150	Steel frame 6 story	12,800					12,800
Higashi Osaka Distribution Center 1-43 Honjohigashi, Higashi Osaka, Osaka 578-0952 TEL 06-6744-0271	Steel frame 4 story	12,700				4,500	17,200
Nishiosaka Distribution Center 2-13-33 Nakashima, Nishiyodogawa-ku, Osaka 555-0042 TEL 06-6476-3420	Steel frame 4 story	64,000					64,000
Kobe Higashi Warehouse 4-15-1 Koyochohigashi, Higashinada-ku, Kobe 658-0031 TEL 078-846-0851	Steel frame 1 story	1,500					1,500
Chugoku							
Okayama Hayashima Distribution Center 3489-1 Mishima, Minami-ku, Okayama 701-0206 TEL 086-238-1331	Steel frame 2 story	10,700	200				10,900
Hiroshima Distribution Center 2-3-5 Tomominami, Asaminami- ku, Hiroshima 731-3168 TEL082-849-5228	Steel frame 1 story	2,200	800	500			3,500
Yamaguchi Distribution Center 1003-40 Shimoosaba, Yamaguchi, Yamaguchi 753-0212 TEL 083-927-1414	Steel frame 2 story	6,800	400				7,200
Kyushu							
Fukuoka Temperature Controlled Distribution Center 5-5-20 Hakozaiki futo, Higashi-ku, Fukuoka 812-0051 TEL 092-631-4323	Steel frame 2 story	800	500	800			2,100
Saga Distribution Center 5005 Sonobe-yayoigaoka, Kiyamacho, Miyaki, Saga 841-0203 TEL 0942-81-4870	Steel frame 3 story	9,700					9,700

*Temperature controlled warehouse: Warehouse that is able to maintain a certain temperature (10~20°C)

Warehouses / Centers
(Domestic group companies)



Name	Structure	Dimensions (m ²)					
		Dry	Chilled	Frozen	Automated	Temp-Cntl	Total
Kanriku Co.,Ltd.							
Takamatsu Office (Takamatsu Distribution Center) 121-20 Showa, Sanuki, Kagawa 769-2304 TEL 0879-24-9101	Steel frame 1 story	8,000					8,000
Sakaide Office 4285-315 Hayashidacho-banyamae, Sakaide, Kagawa 762-0012 TEL 0877-47-2138	Steel frame 1 story	10,500					10,500
Matsuyama Grocery Center 2882-5 Minamigata, Toon, Ehime 791-0301 TEL 089-966-1516	Steel frame 3 story	32,800	900				33,700
Osaka Distribution Office 2-13-5, Nakashima, Nishiyodogawa-ku, Osaka 550-0041 TEL 06-6475-2005	RC 4 story (part of the 3rd floor)	992					992
Ouchida Warehouse 725 Ouchida, Kita-ku, Okayama, Okayama 701-0165 TEL 086-293-5721	Some steel frame, 2 story	6,200				3,900	10,100
Hayashima Warehouse 783-2 Yao, Hayashimacho, Tsukubo, Okayama 701-0301 TEL 086-293-5261	Steel frame 2 story	3,100	900	700		1,300	6,000

Japan Airways Co.,Ltd.

Tokyo Distribution Center 1-5-21 Katsushima, Shinagawa-ku, Tokyo 140-0012 TEL 03-5762-7013	Steel frame 6 story	3,100	100	100			3,300
Osaka Chuo Office 1-27-20 Nishikujo, Konohana-ku, Osaka 554-0012 TEL 06-6461-4551	Steel frame 6 story	1,500					1,500
Kansai Airport Center 5-6 Rinkuorai, Izumisano, Osaka 598-0048 TEL 072-458-2381	Steel frame 1 story	1,900					1,900
Fukuoka Distribution Center 3-22-31 Higashihie, Hakata-ku, Fukuoka 812-0007 TEL 092-474-4411	Steel frame 4 story	700					700

Name	Structure	Dimensions (m ²)					
		Dry	Chilled	Frozen	Automated	Temp-Cntl	Total

Maekawa Transport Co.,Ltd.

Hidaka Warehouse 1322-2 Ibaraki, Hidakacho, Hidaka, Wakayama 649-1211 TEL 0738-63-3411	Steel frame 1 story	2,900					2,900
---	------------------------	-------	--	--	--	--	-------

Sano Unyu Co.,Ltd.

Maya Distribution Center (Bonded) Maya distribution center East building, Maya futo, Nada-ku, Kobe 657-0854 TEL 078-805-6155	Steel frame 1 story	4,000					4,000
Kobe Minatojima Port Transportation Cooperative Association (Bonded) Minatojimamachi-3chome, Chuo-ku, Kobe 650-0045 TEL 078-303-0061	Steel frame 2 story	6,000					6,000

*Temperature controlled warehouse: Warehouse that is able to maintain a certain temperature (10~20°C)

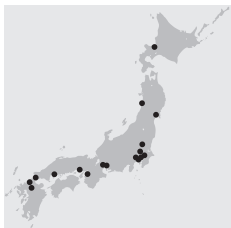
(As of October 1, 2017)

Kyushu Sanko Unyu Co., Ltd.



Name	Address	Phone number	Area of factory(m ²)
Medical Department The First Medicine Center	1450-1 Ogoori, Ogoori-shi, Fukuoka 838-0141	0942-72-4131	16,800
3PL Department Nakakyusyu Circulation Center	1450-1 Ogoori, Ogoori-shi, Fukuoka 838-0141	0942-73-5945	8,400
3PL Department Strage Room	2-20-3 Ryutsudanchi, Minami-ku, Kumamoto 862-8635	096-377-2435	1,800
Recycle and charter Business Department Environmental zone center	2526 Fukasako, Hirata, Mashiki-machi, Kamimashiki-gun, Kumamoto 861-2212	096-388-2731	2,200
3PL Department Kumamoto Food Products Center	2-20-3 Ryutsudanchi, Minami-ku, Kumamoto 862-8635	096-334-7111	800
3PL Department Kurino Food Products Center	1913-7 Yonenaga, Yusui-cho, Aira-gun, Kagoshima 899-6207	0995-74-5872	500

Konoike Medical Co., Ltd.



Name	Address	Phone number	Area of factory(m ²)
Sapporo Office (Sapporo Center)	1-9-3 Higashi, Minami 6-jo, Chuo-ku, Sapporo, Hokkaido 060-0056	011-511-8883	200
Akita Office (Akita Sterilization Center)	11-1 Iwakifutago-mukaimura, Yurihonjo, Akita 018-1305	0184-73-3221	1,000
Miyagi Office (Miyagi Sterilization Center)	3-8-2 Yoshiokahigashi, Taiwacho, Kurokawa, Miyagi 981-3627	022-345-5511	800
Tochigi Office (Tochigi Sterilization Center)	62-3 Hagadai, Hagamachi, Haga, Tochigi 321-3325	028-677-1215	1,000
Saitama Office (Saitama Sterilization Center)	3-5-24 Nizominami, Toda, Saitama 335-0026	048-430-4555	1,000
Chiba Office (Chiba Sterilization Center)	8-1 Goi-minamikaigan, Ichihara, Chiba 290-0045	0436-24-6301	900
Tokyo Office (Tokyo Sterilization Center)	5-9-12 Tachibana, Sumida-ku, Tokyo 131-0043	03-3613-1691	1,300
Tokyo Office	1-5-21 Katsushima, Shinagawa-ku, Tokyo 140-0012	03-5753-3151	14,000
Yokohama Office	2-2-15 Shinyokohama, Kouhoku-ku, Yokohama 222-0033	045-476-2650	—
Nagoya Office	8-17-1 Mitsui, Ichinomiya, Aichi 491-0827	0586-81-8311	—
Nagoya Office (Ichinomiya Sterilization Center)	1-11-30 Denpoji, Ichinomiya, Aichi 491-0822	0586-76-8222	600
Osaka Office (Osaka Sterilization Center)	3-59 Hamaderafunaocho-nishi, Nishi-ku, Sakai, Osaka 592-8342	072-261-2750	700
Hyogo Office (Hyogo Washing Center)	1957-1 Okashita, Nishifutamiaza, Futamicho, Akashi, Hyogo 674-0094	078-942-7638	300
Hiroshima Office (Hiroshima Sterilization Center)	3-74-25 Minamimyojinmachi, Kaitacho, Aki, Hiroshima 736-0055	082-824-1551	1,000
Kanmon Office (Kanmon Sterilization Center)	1-43-56 Chofusaigawa, Shimonoseki, Yamaguchi 752-0928	0832-49-2277	1,300
Fukuoka Office	8-5-75 Yoshizuka, Hakata-ku, Fukuoka Hakkou Distribution Center, 7nd floor 812-0041	092-627-1681	—
Fukuoka Office (Fukuoka Center)	8-5-75 Yoshizuka, Hakata-ku, Fukuoka Hakkou Distribution Center, 7nd floor 812-0041	092-627-1681	2,500

Konoike Tarnsport Co., Ltd. Engineering factories



Name	Address	Phone number	Area of factory(m ²)
Wakayama Engineering Factory	1850 Minato, Wakayama 640-8555 Inside Wakayama works, Nippon Steel & Sumitomo Metal Corporation	073-455-3366	2,000
Yawata Engineering Factory	1-3-25 Higashiminato, Kita-ku, Kokura, Kitakyusyu, Fukuoka 803-0802	093-562-6820	4,959
Kashima Engineering Factory	2279-6 Hirai, Kashima, Ibaraki 314-0012	0299-84-6455	4,300
Techno Service Osaka Office	4-14-34 Tsurumachi, Taisho-ku, Osaka 551-0023	06-6555-7670	2,500
Techno Service Soka Office	2-4-38 Hanaguri, Soka, Saitama 340-0044	048-921-8600	3,300

(As of October 1, 2017)

Warehouses / Centers
(Overseas group companies)

Name	Name of Warehouse	Structure	Dimensions (m ²)				
			Dry	Chilled	Frozen	Temp-Cntl	Total
Konoike-Pacific California, Inc.	KPC	Rack Support Type		2,700	8,500		11,200
Konoike-General, Inc.	KGI	Rack Support Type		2,000	5,100		7,100
Konoike-E Street, Inc.	KES	Rack Support Type		800	7,100		7,900
Konoike Transport & Engineering (H.K.) Ltd.	Tsing Yi Distribution Center	RC 22 story	5,400				5,400
BEL International Logistics Limited.	BEL Interlink	RC	2,416				2,416
BEL Supply Chain Solutions Ltd.	BSCS Mita	RC	2,880				2,880
Konoike Logistics (Shenzhen) Co., Ltd.	Foshan Warehouse	RC	1,500				1,500
Qingdao Cosco Konoike Logistics Co., Ltd.		RC		1,400	2,900		4,300
Konoike Logistics (Shanghai) Co., Ltd.	Waigaoqiao Baoshuiqu Warehouse (bonded)	Steel frame 1 story	4,400				4,400
	Wuxi Domestic Warehouse	High floor type 1 story	3,900				3,900
Konoike Asia (Jiangsu) Co., Ltd.	Temperature-Controlled Logistics Center	Steel frame 1 story				8,600	8,600
Konoike Vinatrans Logistics Co., Ltd.	Frozen Refrigerated Warehouse	All high floor type warehouse		400	900		1,300
	VSIP Bonded Warehouse (bonded)		3,000				3,000
	Phuc Dien (bonded)	All high floor type warehouse	4,400				4,400
Anpha-AG Joint Stock Company		Steel frame 1 story		1,500	8,000		9,500
Konoike Transport & Engineering(S) Pte. Ltd.	Senoko Food Warehouse	RC	1,296			1,030	2,326
Konoike Cool Logistics (Thailand) Co., Ltd.	KCLT	Steel frame 1 story				9,900	9,900
Konoike Myanmar Co., Ltd.	KMC	Steel frame 1 story	2,450				2,450

Business license, permission, and registration
(Domestic)

[Konoike Transport Co., Ltd.]

Classification	Name of licence, permission, and registration	
Food	Food sales and marketing	
Maritime cargo transportation	Port transportation business	
	Port worker dispatch business	
	Ocean transportation business (overseas shipping)	
	Land transportation	General cargo truck transportation business
		Type 1 cargo transportation business
	Air cargo transportation	Type 2 cargo transportation business
		Specified air cargo transportation business
	Warehouse	Air cargo transport agency business
	Customs clearance	Warehouse business
	Bonded warehouse	
	Customs clearance business	
Engineering	General construction business	
	Type 1 Fluorocarbons collections business	
Worker dispatch	Worker dispatch (notified)	
	Worker dispatch (licensed)	
Other	Managed care instrument sales business	
	Medical equipment manufacturing industry	
	Quasi drug manufacturing business	
	Cosmetics manufacturing business	
	Automobile dismantle and maintenance business	
	Industrial wastes collections and transportation business	
	Oil distribution business	
	Secondhand store	
Specified letter delivery business		

[Domestic group companies]

Company	Classification	Line of Business
ASR Recycling Kashima Co.,Ltd.	Waste	Industrial waste disposal business
		General waste disposal business
Eco Innovation Inc.	Industrial waste	Industrial waste disposal business
		Specially controlled industrial waste disposal business
		Industrial waste collections and transportation business
		Specially controlled industrial waste collections and transportation business
	Worker dispatch	Specified worker dispatch business
	Other	Scrap metal sales
Otori Tech Co., Ltd.	Worker dispatch	Specified worker dispatch business
Konoike Express Co., Ltd.	Truck transportation	General cargo truck transportation business
		Type 1 cargo transportation business
	Industrial waste	Industrial waste collections and transportation business
		Specially controlled industrial waste collections and transportation business
	Other	Specified automobile maintenance business
Konoike Engineering Co.,Ltd.	Engineering	Construction business
	Worker dispatch	Worker dispatch business
Chiyoda Inspection Industries Co.,Ltd.	Engineering	Type C nondestructive inspection business
	Worker dispatch	Specified worker dispatch business
	Other	Measurement certification business
Konoike Corporate Service Co., Ltd.	Truck transportation	Type 1 cargo transportation business
	Engineering	Building environment and sanitation management business
	Worker dispatch	General worker dispatch business
	Other	Security business
		Antiques business
Scrap metal sales		
	Hospital cleaning	
Kyushu Sanko Unyu Co., Ltd.	Air cargo / Rail cargo transportation	Type 2 cargo transportation business
		Customs clearance business
		General cargo truck transportation business
	Truck transportation	Type 1 cargo transportation business
		Light cargo transportation business
	Warehouse	Warehouse business
	Industrial waste	Industrial waste disposal business
		Specially controlled industrial waste collections and transportation business
	Worker dispatch	Specified worker dispatch business
	Other	Specified letter delivery business
Medicinal products wholesale trade		
Medicinal products for animals wholesale trade		
Chilled or freeze food business		

Company	Classification	Line of Business
Konoike Medical Co., Ltd.	Truck transportation	Type 1 cargo transportation business
		Advanced medical management device sales (licensed)
	Other	Medical equipment manufacturing industry (licensed)
		Advanced medical management device sales and rental (licensed)
		Medical equipment repair business (licensed)
		Medical management device sales (notified)
		Medicinal products device sales (licensed)
		Cosmetics manufacturing (licensed)
		Hospital cleaning
		Hospital sterilizing
	Sterilizing outside hospital	
	Maintenance check of the medical equipment	
K Ground Service Co.,Ltd.	Air cargo transportation	Customs clearance business
		Bonded warehouse
		Business rights at Kansai International Airport
	Business rights at Tokyo International Airport	
	Worker dispatch	Specified worker dispatch business
K Sky Co.,Ltd.	Worker dispatch	General worker dispatch business
K Ground Expert Co.,Ltd.	Worker dispatch	Specified worker dispatch business
KPS Co., Ltd.	Worker dispatch	Specified worker dispatch business
Konoike Air Port Service Co.,Ltd.	Truck transportation	Type 1 cargo transportation business
	Worker dispatch	Type 2 cargo transportation business
Kanriku Co.,Ltd.	Truck transportation	Specified worker dispatch business
		General cargo truck transportation business
		Type 1 cargo transportation business
		Type 2 cargo transportation business
		Light cargo transportation business
		Customs clearance business
	Warehouse	Warehouse business
		Bonded warehouse
	Industrial wastes	Industrial wastes collections and transportation business
	Worker dispatch	Specified worker dispatch business
Employment agency	Fee charging employment agency	
Other	Measuring certification business	
Konohana Transport Co.,Ltd.	Truck transportation	General cargo truck transportation business
		Type 1 cargo transportation business
	Worker dispatch	General worker dispatch business
	Industrial waste	Industrial waste collections and transportation business
	Engineering	Construction business

[Domestic group companies]

Company	Classification	Line of Business
Japan Airways Co., Ltd.	Air cargo / Rail cargo transportation / Coastal transportation	Type 2 cargo transportation business
		Air cargo transport agency business
	Truck transportation	Type 1 cargo transportation business
		General cargo truck transportation business
		Light cargo transportation business
		General rental car transportation business
	Warehouse	Warehouse business
	Industrial wastes	Industrial wastes collections and transportation business
	Worker dispatch	Specified worker dispatch business
		Worker dispatch business
Other	Travel agency	
	Specified letter delivery business	
Maekawa Transport Co.,Ltd.	Truck transportation	General cargo truck transportation business
		Type 1 cargo transportation business
	Warehouse	Warehouse business
Konoike Shipping Co., Ltd.	Ocean transportation	Type 1 cargo transportation business
	Truck transportation	Type 1 cargo transportation business
Sano Unyu Co., Ltd.	Ocean / Air cargo transportation	Port transportation business
		Customs clearance business
	Truck transportation	Type 1 cargo transportation business
Nichiu Co., Ltd.	Ocean / Air cargo transportation	Port transportation business
		Customs clearance business
	Truck transportation	Type 1 transportation business
Konoike Business Management Co.,Ltd.	Other	Money lending business

[Overseas group companies]

Company	Classification	Line of Business
Konoike-Pacific California, Inc.	Truck transportation	Licensed for California truck business(CA#0296554)
	Warehouse / Food	USDA specification inspection place FDA registered(BIOTERRORISM ACT)
Konoike Transport & Engineering (USA), Inc.	Ocean cargo transportation	NVOCC*1(FMC LICENCE #16977N)
Konoike-General, Inc.	Warehouse	USDA specification inspection place
		Warehouse business (frozen and chilled)
Konoike-E Street, Inc.	Warehouse	USDA specification inspection place
		Warehouse business (frozen and chilled)
Konoike Transport & Engineering (H.K.) Ltd.	Ocean cargo transportation	Transport & Warehouse business
	Truck transportation	
	Warehouse / Dry	
BEL International Logistics Limited.	Air cargo transportation	IATA Air Transport Sales Agency Services 1st category
	Ocean cargo transportation	NVOCC*1, FIATA
	Warehouse/Dry	Bonded warehouse business
	Truck transportation	Warehouse business at part of bonded area
Konoike Logistics (Shenzhen) Co., Ltd.	Ocean cargo transportation	NVOCC*1
	Truck transportation	International cargo transportation agency outside bond district
	Warehouse / Dry	Warehouse business at bonded area

Company	Classification	Line of Business
Qingdao Cosco Konoike Logistics Co.,Ltd.	Ocean cargo transportation	NVOCC*1
	Truck transportation	Ground cargo transportation business
	Warehouse / Dry	Bonded warehouse business
	Warehouse / Food	Warehouse business at part of bonded area
Konoike Logistics (Shanghai) Co.,Ltd.	Ocean cargo transportation	NVOCC*1
	Warehouse / Dry	Bonded warehouse business
	International trade	International trade business
	Truck transportation	Dry cargo transportation / Chilled cargo transportation
International cargo transportation agency		
Licensed for truck transport of bonded cargo authorized by the Customs		
Konoike Asia (Jiangsu) Co., Ltd.	Ocean cargo transportation	Forwarding business
	Warehouse / Dry	Warehouse business
	Truck transportation	Dry cargo transportation / Chilled cargo transportation
International cargo transportation agency		
PT.Konoike Transport Indonesia	Ocean cargo transportation	Forwarding business
Konoike Vinatrans Logistics Co.,Ltd.	Ocean cargo transportation	NVOCC*1
	Truck transportation	Ground transportation business
	Warehouse / Food	Warehouse business
Anpha-AG Joint Stock Company	Warehouse / Food	Warehouse business
	Transportation	Track Agency Licence
	Machinery process	Manufacturing and processing of machinery
Vinako Forwarding Co.,Ltd.	Air cargo transportation	IATA Agent license
Konoike Transport & Engineering (S) Pte Ltd.	Ocean cargo transportation	NVOCC*1 Warehouse / Factory License Halal License, AVA License
Konoike J.Transport (Thailand) Co., Ltd.	Truck transportation	Ground transportation business
Konoike Asia (Thailand) Co., Ltd.	Ocean cargo transportation	NVOCC*1
	Truck transportation	Ground transportation business
	Air cargo transportation	IATA Agent licence
Konoike Cool Logistics (Thailand) Co.,Ltd.	Warehouse	Warehouse business
Konoike Express (Thailand) Co.,Ltd.	Truck transportation	Ground transportation business
Konoike-EURO Logistics (Bangladesh) Ltd.	Ocean cargo transportation	NVOCC*1
	Truck transportation	Ground transportation business
	Air cargo transportation	IATA Agent licence
Konoike Myanmar Co.,Ltd.	Ocean cargo transportation	Investment approval of thilawa SEZ management committee
	Air cargo transportation	NVOCC*1
	Truck transportation	Myanmar international freight forwarders' certificate of membership
		Warehouse / Dry
Joshi Konoike Transport (India) Pvt.Ltd.	Container train operator	Container train operator

*1 NVOCC:Business licensed as a non vessel operating common carrier.

(As of October 1, 2017)

List of Acquired Green Management Certifications

Created by the Ministry of Land, Infrastructure, Transport and Tourism, this is a system that awards certifications to businesses that work above a set level of environmental conservation standards.

Truck	
Konoike Transport Co., Ltd.	39 places
Group	6 places

Warehouse	
Group	1 place

List of Certified Offices made excellent records on Safety standard

The certification is a program administered by the Japan trucking association, Organization for the standardization of truck cargos in Japan which reviews and certifies the safety of each truck transportation company and offers consumers and cargo companies a system in which they are able to choose a safe trucking company. This increases the overall safety awareness of the industry.

High safety certified office certification	
Konoike Transport Co., Ltd.	50 places
Group	38 places

(As of October 1, 2017)

List of Acquired ISO / Privacy Mark Certification

<ISO 9001 / Quality>

International distribution	
Group	3 places

General distribution

Group	4 places
-------	----------

<ISO 22000 / Food safety >

Beverage distribution	
Konoike Transport Co., Ltd.	1 place

<ISO 14001 / Environment>

Steel	
Group	3 places

<ISO 13485 / Medical devices>

Healthcare	
Group	2 places

(As of October 1, 2017)

History of Konoike Transport Co.,Ltd.



Konoike Transport has roots that go back nearly 135 years. In 1880, in a village called Kitadenpo in which is now part of Osaka, Chujiro Konoike started a business for transporting goods. That business was later incorporated, and Konoike Transport has now been in operation for more than a century. The company has established a large network of bases in Japan and overseas, and continues to expand on a global scale. There is good reason why the company has enjoyed steady development. From the day the company was founded, corporate policy has consistently aimed at customer satisfaction by providing a far broader range of services than just transport. It is this approach that has forged the Konoike tradition. Konoike symbol named “Maru-kita”, which is designed Chinese character “北(Kita)” in the circle, is conveyed that “Kita” has the meaning the “Kitamae ships”, which are necessary and important to transport in the sea in Edo and Meiji period as well as Konoike’s birthplace named “Kitadenpo Village (which is located in Konohana, Osaka city). And the “Maru” means the circle which has the meaning of the harmony in our company.

1880 Group founder Chujiro Konoike opens a worker placement and transport business in what is now Konohara Ward, Osaka as a private merchant.

1900 Begins onsite cargo handling and transport operations at client steelworks.

1945 Establishes Konoike Transport Co.,Ltd.

1951 Begins in-factory contract operations for the food industry.
Registers as port transport service operator following passage of Port Transportation Business Act.

1962 Starts warehousing operations.

1963 Enters maritime cargo transport business.

1970 Starts industrial waste disposal business.

1975 Kashimasenko Co., Ltd.(Current Eco Innovation Inc.)'s No. 1 Resource Recycling Furnace completed.

1979 Starts air cargo transport business.

1980 100 years anniversary since start of business.

1984 Expands to Singapore.

1985 Expands to U.S.A.
Expands to China.
Sets up Saitama base for Temperature-Controlled Logistics Services. (Urawa Distribution Center as a current Urawa Temperature Controlled Distribution Center)

1991 Establishes Konoike Air Port Engineering Co.,Ltd.(Current Konoike Air Port Service Co.,Ltd.) and begins the Airport-Related Services.

1993 Becomes the first Japanese distribution company to become established in Viet Nam.

1994 Establishes MSS North Kanto (Current Konoike Medical Co., Ltd.) and launches Medical-Related Services.
Begins onsite operations at Kansai International Airport (airport-related business).

1996 Sets up Kansai base for Temperature-Controlled Logistics Services.(Osaka Food Distribution Center as a current Osaka Temperature Controlled Distribution Center).

1998 Acquires first ISO9002:1994 certification at Tonegawa distribution center(Current Kitakanto Distribution Center).

2000 Acquires first ISO14001:1996 certification at Tonegawa distribution center(Current Kitakanto Distribution Center).

2001 Expands to Philippines.
Expands to Indonesia.

2008 Expands to India.

2009 Expands to Thailand.
Kashimasenko's No. 2 furnace completed; marking foray into environmental technology field.
Becomes the first Japanese distribution company to become established in Bangladesh.

2010 130 years anniversary since start of business.
Acquires JAL subsidiaries as a Group. Expands the Airport-Related Services(K Ground Service Co.Ltd., K Sky Co., Ltd., K Ground Expert Co., Ltd.).

2011 Establishes Konoike Techno Training Center in Osaka.

2012 Expands to Myanmar.

2013 Expands to Cambodia.
Officially listed on the First Section of the Tokyo Stock Exchange.

2014 Establishes a collaborative investigation lecture with Graduate Schools of Osaka University.
Expands to Mexico.
Kyushu Sanko Unyu Co., Ltd. becomes subsidiary company.
Establishes Safety/Quality Training Center in Chiba.

2015 Acquires first ISO22000:2005 certification at Kitakanto Distribution Center.

2016 ASR Recycling Kashima Co.,Ltd.becomes subsidiary company.

2017 On the occasion of its relocation, the Tokyo regional head office has been renamed Tokyo head office.
NKS Holding Co.,Ltd. becomes subsidiary company.



Website: <http://www.konoike.net/>

KONOIKE GROUP Videos: <http://www.konoike.net/en/corporateprofile/movie/>