

DATA FILE

2025 Vol.1



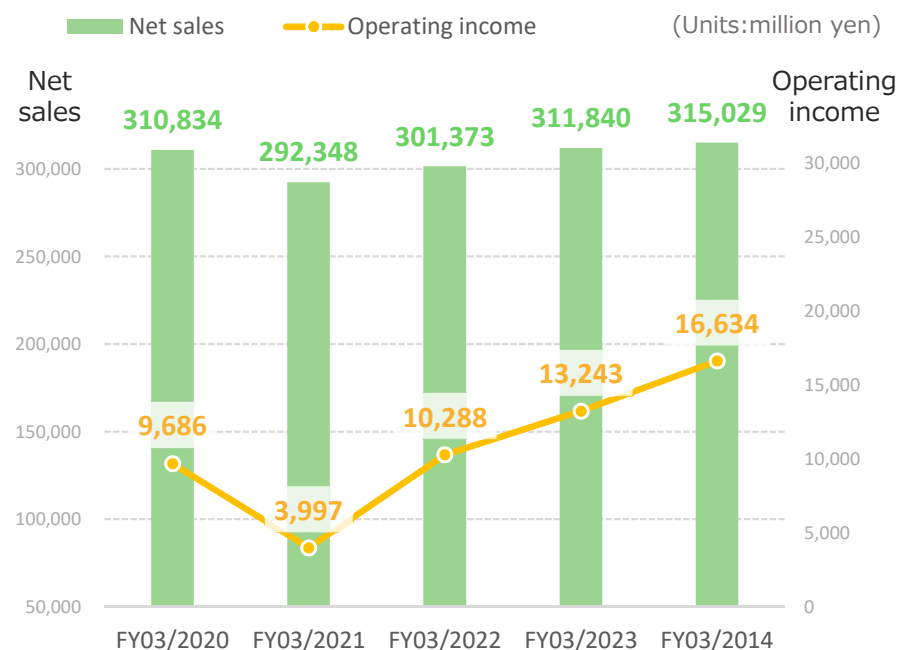
Overview

As of April 1, 2025

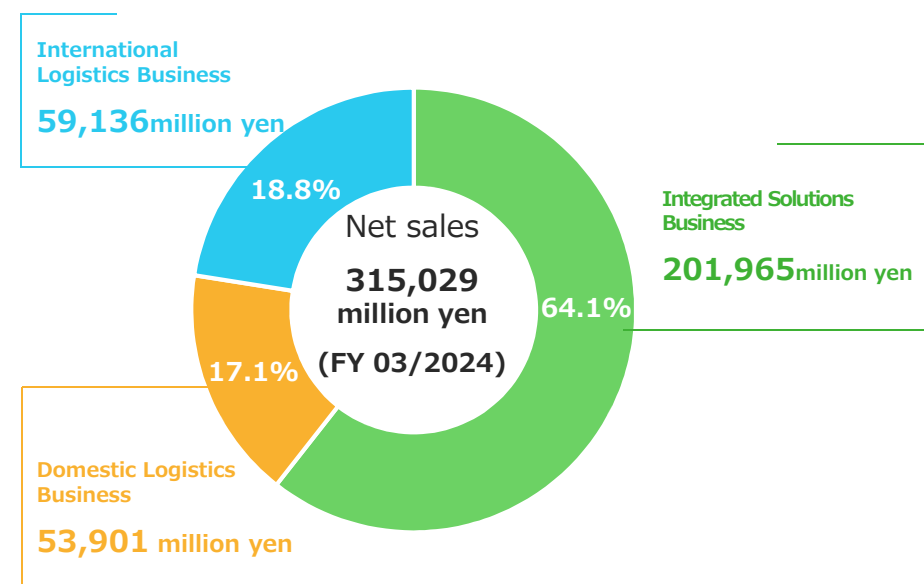
| | |
|--------------------------|---|
| Osaka head office | 4-3-9 Fushimimachi, Chuo-ku, Osaka 541-0044 TEL +81-6-6227-4600(operator) |
| Tokyo head office | 6-10-1 Ginza, Chuo-ku, Tokyo 104-0061 TEL +81-3-3575-5751(operator) |
| Incorporated | May 30, 1945 |
| Representative | Tadahiko Konoike, Representative Director, Chairman, President and Chief Executive Officer |

| | |
|----------------------|--|
| Capital stock | 1,723 million yen [As of March 31, 2025] |
| Net sales | Group : 315,029 million yen Konoike Transport alone : 213,775 million yen [April 1, 2023 ~ March 31, 2024] |
| Employees | Group: Approx. 24,000 Konoike Transport alone: Approx. 14,000 ※Including Temporary Employees [As of March, 2024] |
| Offices | Domestic : 183, Overseas : 36 |
| Banks | Sumitomo Mitsui Banking Corporation, MUFG Bank, Mizuho Bank |

Net sales and Operating income



Net sales by business segment (Group)





Directors / Executive Officers

As of April 1, 2025

Directors

| | | |
|--|--------------------------|---|
| Representative Director, Chairman, President and Chief Executive Officer | Tadahiko Konoike | |
| Director and Senior Managing Executive Officer | Tadatsugu Konoike | In charge of Overseas Business / In charge of Technology Innovation |
| External Director | Yoshihito Ota | |
| External Director | Mika Masuyama | |
| External Director | Taisuke Fujita | |

Audit & Supervisory Board Members

| | |
|--|--------------------------|
| Full-time Audit & Supervisory Board Member | Hiroaki Kobayashi |
| Full-time Audit & Supervisory Board Member | Shuichi Tanaka |
| External Audit & Supervisory Board Member | Chie Hoshi |
| External Audit & Supervisory Board Member | Tomonari Kimura |



Directors / Executive Officers

As of April 1, 2025

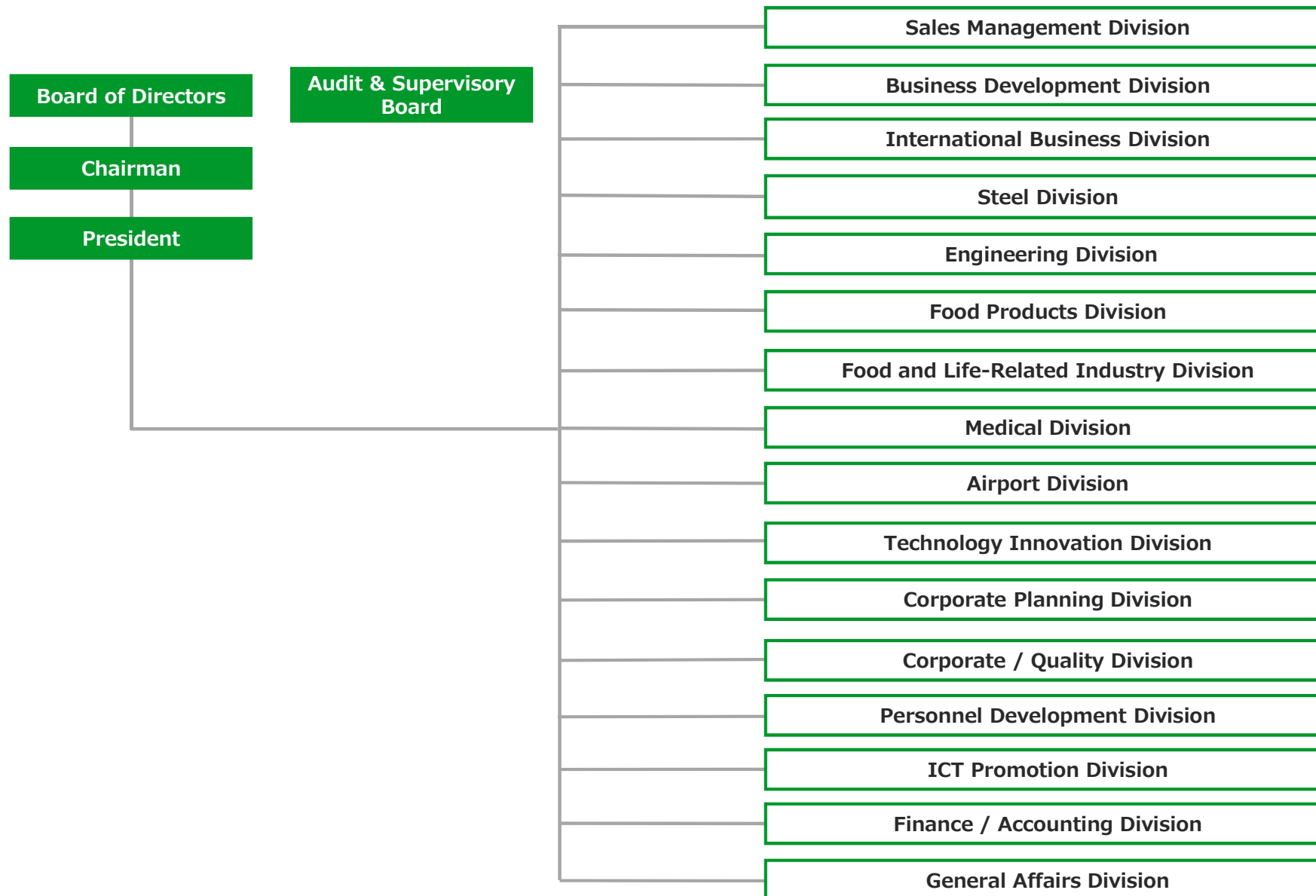
Executive Officers

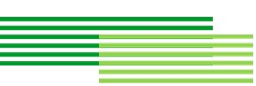
| | | |
|-----------------------------------|----------------------------|---|
| Senior Managing Executive Officer | Hiroshi Tsuga | In charge of Corporate Department / In charge of Sustainability |
| Senior Managing Executive Officer | Shigeki Tanabe | Executive General Manager, Sales Division / In charge of domestic business |
| Managing Executive Officer | Koji Shoda | In charge of Special Missions of the President (Next-Generation Energy), Assistant in charge of Sustainability |
| Managing Executive Officer | Shingo Yoshida | Executive General Manager, Corporate / Quality Division |
| Managing Executive Officer | Atsuya Sakamoto | In charge of Kansai Business Promotion / Special Missions of the President (Next-Generation Energy) |
| Managing Executive Officer | Kazumitsu Miyoshi | Executive General Manager, Engineering Division |
| Managing Executive Officer | Kazuo Ofuchi | Executive General Manager, Corporate Planning Division |
| Executive Officer | Shigeo Nakamura | Deputy Executive General Manager, Corporate / Quality Division / General Manager of Environment Division |
| Executive Officer | Toshihiro Fujiwara | In charge of Special Missions of the President (India Representative Officer) |
| Executive Officer | Hitoshi Nishi | Executive General Manager, General Affairs Division / In charge of Risk Management |
| Executive Officer | Masahiro Kashiwada | Executive General Manager, Steel Division |
| Executive Officer | Yoshihito Nakanishi | Executive General Manager, Finance / Accounting Division |
| Executive Officer | Kiyofumi Okamoto | Executive General Manager, Airport Division / President, Konoike Air Holding Co., Ltd. |
| Executive Officer | Hideki Takami | Executive General Manager, Medical Division |
| Executive Officer | Takahide Towa | Executive General Manager, International Business Division |
| Executive Officer | Mitsuyuki Inoue | Executive General Manager, Food and Life-Related Industry Division |
| Executive Officer | Koji Kuramoto | Executive General Manager, Food Products Division |
| Executive Officer | Shigeo Kawada | Executive General Manager, Personnel Development Division / In charge of Human Resources Strategy |
| Executive Officer | Shigenori Akagi | Deputy Executive General Manager, Food and Life-Related Industry Division / President Japan Airways Co., Ltd. |
| Executive Officer | Hiromitsu Kuramoto | Deputy Executive General Manager, Food and Life-Related Industry Division (In charge of general logistics) |
| Executive Officer | Keita Watanabe | Deputy Executive General Manager, International Business Division / General Manager of International Logistics (Osaka) Branch |
| Executive Officer | Masaya Sato | Executive General Manager, ICT Promotion Division / General Manager of Digital Transformation Promotion Department |
| Executive Officer | Kunihiro Katsurada | Deputy Executive General Manager, Food Products Division |



Organization chart

As of April 1, 2025





Domestic branches

As of April 1, 2025

| Branch name | Address | TEL |
|--|--|--------------|
| International Logistics (Osaka) Branch | 2-1-23 Chikko, Minato-ku, Osaka 552-0021 | 06-6572-3017 |
| International Logistics (Tokyo) Branch | 1-9-13 Nihonbashihoncho, Chuo-ku, Tokyo 103-0023 | 03-6738-2850 |
| Steel Kansai Branch | 3-8-41 Matsuenaka, Wakayama, Wakayama 640-8423 | 073-455-4101 |
| Steel Higashi-Nippon Branch | 1520-4 Izumigawa, Kashima, Ibaraki 314-0015 | 0299-82-7511 |
| Engineering Branch | 1-3-25 Higashiminato, Kokurakita-ku, Kitakyushu 803-0802 | 093-562-6820 |
| Nishi-Nihon Branch | 1-15-15 Nakatsu, Kita-ku, Osaka 531-0071 | 06-6292-5861 |
| Higashi-Nihon Branch | 6-10-1 Ginza, Chuo-ku, Tokyo 104-0061 | 03-3575-5812 |
| Kansai Branch | 3-7-9 Shimaya, Konohana-ku, Osaka 554-0024 | 06-6466-3701 |
| Tokai Branch | 25-1 Namiyose-cho, Atsuta-ku, Nagoya 456-0003 | 052-825-7600 |
| Kanto & Kita-Nihon Branch | 6-10-1 Ginza, Chuo-ku, Tokyo 104-0061 | 03-3575-5806 |
| Kanto Branch | 5-10-14 Suehiro, Chuo-ku, Chiba 260-0843 | 043-261-4421 |
| Temperature Controlled Logistics Branch | 6-10-1 Ginza, Chuo-ku, Tokyo 104-0061 | 03-3575-5806 |

Domestic group companies

As of April 1, 2025

| Company name | Address | TEL |
|---|---|--------------|
| Konoike Medical Co., Ltd. | 1-6-4 Yurakucho, Chiyoda-ku, Tokyo 100-0006 | 03-3580-3860 |
| Kyushu Sanko Unyu Co., Ltd. | 2-20-3 Ryutsudanchi, Minami-ku, Kumamoto 862-8635 | 096-377-2135 |
| Japan Airways Co., Ltd. | 1-5-21, Katsushima, Shinagawa-ku, Tokyo 140-0012 | 03-5753-6200 |
| Kanriku Co., Ltd. | Takamatsu Higashi Factory Park, 121-20 Showa, Sanuki, Kagawa 769-2304 | 0879-24-9100 |
| Konoike Air Holding Co., Ltd. | 6-10-1 Ginza, Chuo-ku, Tokyo 104-0061 | 03-6264-5222 |
| Konoike Air Port Service Co., Ltd. | 4-22-3 Kamata, Ota-ku, Tokyo 144-0052 | 03-6424-5182 |
| Konoike Sky Support Co., Ltd. | 5-6 Rinkuoraikita, Izumisano, Osaka 598-0048 | 072-463-4600 |
| K Sky Co., Ltd. | 1 Senshukukonaka, Tajiri, Sennan, Osaka 549-0011 | 072-455-3373 |
| K Ground Service Co., Ltd. | 2-21 Rinkuoraikita, Izumisano, Osaka 598-0048 | 072-463-8571 |
| K Ground Expert Co., Ltd. | 2-21 Rinkuoraikita, Izumisano, Osaka 598-0048 | 072-463-0155 |
| Japan Airport Service Co., Ltd. | 154-4 Furugome Komae, Narita, Chiba 282-0004 | 0476-32-5881 |
| Airport Terminal Service Co., Ltd. | NC6129, Terminal1 Narita International Airport Narita, Chiba 282-0011 | 0476-34-6020 |
| NAB Corporation. | 1001-1282 Honsanritsuka, Narita, Chiba 286-0118 | 0476-33-4911 |
| J Friendly Inc. | 1001-1282 Honsanritsuka, Narita, Chiba 286-0118 | 0476-40-4322 |
| Air Express, Inc. | 150 Kagamizu, Naha-shi, Okinawa 901-0142 | 098-852-0001 |
| Eco Innovation Inc. | 3 Hikari, Kashima, Ibaraki 314-0014 | 0299-84-3911 |
| ASR Recycling Kashima Co., Ltd. | 3 Hikari, Kashima, Ibaraki 314-0014 | 0299-84-2063 |
| Konoike Express Co., Ltd. | 2-1 Sakaedani, Wakayama, Wakayama 640-8441 | 073-451-4151 |
| Otori Tech Co., Ltd. | 3 Hikari, Kashima, Ibaraki 314-0014 | 0299-82-4558 |
| Konohana Transport Co., Ltd. | 1-24 Kaminomiyacho, Nakamura-ku, Nagoya 453-0043 | 052-481-3221 |
| Sano Unyu Co., Ltd. | 3-1-16 Kaigandori, Chuo-ku, Kobe 650-0024 | 078-391-0092 |
| Chuden Sangyo Co., Ltd. | 684-1 Taguchi, Myoko, Niigata 949-2106 | 0255-86-3127 |
| Konoike Shipping Co., Ltd. | 2-3-1 Shinkawa, Chuo-ku, Tokyo 104-0033 | 03-6738-2960 |
| NBS Inc. | 5-10 Narayamachi, Hakata-ku, Fukuoka 812-0023 | 092-263-8833 |
| Konoike Corporate Service Co., Ltd. | 3-10-29 Shimaya, Konohana-ku, Osaka 554-0024 | 06-6463-8110 |
| Nichiun Co., Ltd. | 4-23 Kaigandori, Naka-ku, Yokohama 231-0002 | 045-201-8951 |
| Chiyoda Inspection Industries Co., Ltd. | 1-1-24 Shimaya, Konohana-ku, Osaka 554-0024 | 06-6465-1275 |
| SHINE Co., Ltd. | 3-8-8 Toranomom, Minato-ku, Tokyo 105-0001 | 03-5401-0330 |
| Konoike IT Solutions Co., Ltd. | 2-3-1 Shinkawa, Chuo-ku, Tokyo 104-0033 | 03-3551-0502 |

Overseas group companies

As of April 1, 2025

Canada

| Company name | Address | Business Details / Staff | TEL |
|--|--|---|----------------|
| Konoike Kanepackage Holding Co., Ltd. | 1 Parrat Rord, Dept Attn: Pine Valley Packaging Group, Uxbridge, ON L9P 1R1 CA | ① Joint venture holding company [Staff] 2 | 1-866-922-5122 |
| Pine Valley Packaging Group Inc. | 1 Parrat Rord, Dept Attn: Pine Valley Packaging Group, Uxbridge, ON L9P 1R1 CA | ① Protective packaging services (design/manufacturing) ② Design packaging solution [Staff] 65 | 1-866-922-5122 |

U.S.A.

| Company name | Address | Business Details / Staff | TEL |
|--|---|---|----------------|
| Konoike-Pacific California, Inc. | 1420 Coil Avenue Wilmington, CA U.S.A. | ①Frozen and Chilled warehouse ②Transloading import and export cargos ③United States Department of Agriculture (USDA) Inspection ④Container drayage, truck distribution and brokerage. ⑤Transloading export cargos (Direct access to 2 major railway companies. (UP/BNSF)) | 1-310-518-1000 |
| Konoike-General, Inc. | 9415 Burtis Street, South Gate, CA U.S.A. | ①Frozen and Chilled warehouse ②Transloading import and export cargos | 1-562-806-2445 |
| Konoike-E Street, Inc. | 901 East E Street, Wilmington, CA U.S.A. | ①Frozen and Chilled warehouse ②United States Department of Agriculture (USDA) Inspection | 1-310-233-7300 |
| Konoike Transport & Engineering (USA), Inc. | 801 East E Street, Wilmington, CA U.S.A. | ①NVOCC business ②Intermodal logistics and installation of heavy mechanical equipments, etc. | 1-310-513-1500 |

Mexico

| Company name | Address | Business Details / Staff | TEL |
|--|--|--|-----------------|
| Pine Valley Packaging Mexico S.A. de C.V. | Av. Telecomunicaciones 107-A Parque industrial STIVA Leon, Gto. Mexico | ① Protective packaging services (design/manufacturing) ② Design packaging solution [Staff] 65 | |
| Konoike Mexico S.A. de C.V. | Prolongacion Gonzalez Gallo, #1897, Int4. Col. San Sebastianito, Tlaquepaque, Jalisco, Mexico | ①NVOCC business ②Intermodal logistics and installation of heavy mechanical equipments, etc. ③Packaging service | 52-33-3797-6222 |
| • Silao Office | Av. Mina de Guadalupe No. 950 Int. G, Parque Industrial Santa Fe IV. Col. Puerto Interior, Silao, Guanajuato, Mexico | ①NVOCC business ②Intermodal logistics and installation of heavy mechanical equipments, etc. ③Packaging service | 52-472-688-2075 |
| • Monterrey Office | Kappa 400, Parque Industrial FINSA, Parque Industrial Milenium, 66626 Ciudad Apodaca, Nuevo Leon, Mexico | ①NVOCC business ②Intermodal logistics and installation of heavy mechanical equipments, etc. ③Packaging service | 52-81-8363-3896 |

Overseas group companies

As of April 1, 2025

China

| Company name | Address | Business Details / Staff | TEL |
|--|---|--|------------------|
| Konoike Transport & Engineering (H.K.) Ltd. | Unit 7-12, 7/F, Mita Centre, 552-566 Castle Peak Road, Kwai Chung, New Territories, Hong Kong | ①Operation business of import and export marine cargos (NVOCC business of dispatch and delivery from Hong Kong and Huanan Area) ②Operation business of import and export air cargos ③Cross border truck business between Hong Kong and Guang dong Province ④Warehouse storage, distribution business in Hong Kong and Guang dong Province ⑤Transportation and installation of mechanical equipments, etc ⑥Operation of transportation between 3 countries and B/L issuance business [staff] 22 | 852-2735-7313 |
| Konoike Logistics (Shenzhen) Co., Ltd. | Rm640, Tower B, Fantasia Funian Plaza.,No.3, Shihua Rd, Futian Free Trade Zone, Shenzhen, Guangdong, China | ①Forwarding of import and export cargos ②NVOCC business ③Cargo transportation business ④Ground transportation business ⑤Custom clearance business ⑥Trading business ⑦Distribution processing and consulting business ⑧Transportation and installation,maintenance of mechanical equipments, etc. [staff] 12 | 86-755-8359-9017 |
| • Guangzhou Branch | Room C01. 25/F. West Tower. Yangcheng International Trading Centre, No.122, East Tiyu Road, Tianhe District, Guangzhou, China | | 86-20-3825-5709 |

Overseas group companies

As of April 1, 2025

China

| Company name | Address | Business Details / Staff | TEL |
|---|---|--|------------------|
| Konoike Logistics (Shanghai) Co., Ltd. | Room 1810, Ruihong Corporate Avenue T1, No.118 Feihong Road, Hongkou District, Shanghai, China | ① Warehouse business ② NVOCC business ③ Cargo transportation business ④ Ground transportation business ⑤ Custom clearance business ⑥ Trading business ⑦ Distribution processing and consulting business ⑧ Installation of mechanical, Maintenance in factory [staff] 33 | 86-21-6309-1118 |
| • Waigaoqiao Warehouse | No.50 Warehouse No.389 Ying Lun Road Waigaoqiao Free Trade Zone, Shanghai, China | | 86-21-5048-2833 |
| • Puxi Office | Room 1810, Ruihong Corporate Avenue T1, No.118 Feihong Road, Hongkou District, Shanghai, China | | 86-21-6309-1118 |
| • Hangzhou Branch | Room 904, Mei Thai International Building, No.836 jin Sha Avenue Economic Technology Development Area Hangzhou, China | | 86-571-8510-8637 |
| • Tianjin Branch | Room 1818, International Building No.75 Nanjing Road, Heping District Tianjin, China | | 86-22-8707-6199 |
| Konoike Asia (Jiangsu) Co., Ltd. | No.9 Haitian Road, Changshu Advanced Material Industrial Park, Jiangsu, China | ① Warehouse Business ② NVOCC Business ③ Truck distribution ④ Distribution processing and Consulting Business ⑤ Installation of mechanical, Maintenance in factory ⑥ ISO9001 ⑦ Electric power supply service, Electricity generation business, Power transmission service, Power service, Research and development of new energy technologies [staff] 56 | 86-512-5219-5058 |
| • Suzhou Branch | Room No.10010, Green Treasure Business Tower No.2-2, Green Treasure Square, No.436 Chang Jiang Road, Suzhou, China | | 86-512-6807-2938 |
| • Wuxi Branch | Room 1502, Zhongke Intelligent Information Industry Park, No.52, Jingxian Road, Xinwu District, Wuxi city, Jiangsu, China | | 86-510-8520-3021 |

Overseas group companies

As of April 1, 2025

China

| Company name | Address | Business Details / Staff | TEL |
|--|---|---|-------------------------------|
| BEL International Logistics Ltd. | RM8A, 8/F, Mita Centre, 552-566 Castle Peak Road, Kwai Chung, New Territories, Hong Kong | ①Forwarding of import and export cargos ②NVOCC business ③Warehouse business ④Transportation business [staff] 52 | 852-2796-0118 |
| BEL International Logistics Ltd. (Shanghai) | Room 1102-1103, 11/F, Global New Times Plaza #1666 Sichuan Road (North) Shanghai, China | ①Forwarding of import and export cargos ②NVOCC business ③Warehouse business ④Transportation business [staff] 14 | 86-21-6122-5488 |
| • Ningbo Branch | Room 9B22, 9/F, Hualian Building, No.55 Dongdu Road, Haishu District, Ningbo, China | | 86-574-8775-2736 |
| • Qingdao Branch | Room 1906 Mansion A Shuangfu Building No.887 Tongan Road, Laoshan District Qingdao, China | | 86-532-6606-0618 |
| • Tianjin Branch | Room 500-1, E-Valley Building, No.37 Sanma Road, Nankai District, Tianjin, China | | 86-22-2315-7327/ 2715-6990 |
| • Shenzhen Branch | Room 06,07,08, 21/F, Blk B Regalia Place Building, No.4018 Jiabin Road, Luohu District, Shenzhen, China | | 86-755-8221-9366 |
| • Xiamen Branch | Room 1111, Yindu Plaza, No.9 Haitian Road, Huli District, Xiamen, China | | 86-592-5616-677 |
| • Guangzhou Branch | Room 1502, 15/F., Dongshan Plaza, 69 Xian Lie Road Central, Yuexiu District, Guangzhou, China | | 86-20-8732-2511 |
| BEL Supply Chain Solutions Ltd. | Unit 7-12, 7/F, Mita Centre, 552-566 Castle Peak Road, Kwai Chung, N.T. Hong Kong | ①Warehouse business ②Transportation business [staff] 16 | 852-3468-6678 |
| Qingdao Cosco Konoike Logistics Co., Ltd. | No.18, Gao Chang Road, Phoenix Valley, High-Tech Industrial Park, Qingdao, China | ①Warehouse business at part of bonded area ②Container vanning and devanning work ③Marine products processing business ④NVOCC business ⑤Forwarding of import and export cargos ⑥Ground transportation business [staff]48 | 86-532-8870-1607 |
| • City Office | Room3503, 35F Qingdao International Finance Center,59 Hong Kong Middle Road, Qingdao, China | | 86-532-8597-3976 |

Overseas group companies

As of April 1, 2025

Philippines

| Company name | Address | Business Details / Staff | TEL |
|---|---|---|---------------------|
| Konoike Philippines Corporation | 301 Centrale Bldg. South Point Subdivision Banay-Banay Cabuyao Laguna, Philippines | ①Logistics Service ②NAIA Terminal I & II Counter Attendant [staff] 514 | 63-049-530-6698 |
| MacroAsia Airport Services Corporation | 3rd Floor, Building A, Skyfreight Center, Ninoy Aquino Avenue, Brgy. Sto. Niño, Parañaque City, Philippines | ①Passenger Handling ②Ramp Handling ③Apron Cleaning ④Cargo Services ⑤GSE Maintenance [staff]4,453 | 63-2-8878-5000 |
| PKI Manufacturing & Technology, Inc. | Lot 14, Phase 1-A, SSB First Philippines Industrial Park Sto. Tomas, Batangas, Philippines | ①Contract operations [staff] 42 | 63-43-405-6388/6389 |

Indonesia

| Company name | Address | Business Details / Staff | TEL |
|--|--|---|----------------|
| PT. Konoike Transport Indonesia | Midplaza1 Building, 19th Floor, Jl.Jend. Sudirman Kav. 10-11, Jakarta, Indonesia | ①Forwarding of import and export of ocean and air cargos ②Custom clearance business ③NVOCC business ④Transportation and installation of mechanical equipments, etc. ⑤Engineering ⑥Warehouse business [staff] 21 | 62-21-573-5665 |

Overseas group companies

As of April 1, 2025

Viet Nam

| Company name | Address | Business Details / Staff | TEL |
|--|--|--|-----------------|
| Konoike Vinatrans Logistics Co., Ltd. | 18-A Luu Trong Lu, District 7, Ho Chi Minh City, Vietnam | ①Forwarding Business (Import & Export cargo, NVOCC, etc) ②Transpotation Business (Domestic transport, Truck & Trailer & Drayge & cool logistics, etc) ③Warehouse Business (Bonded & Dry & Frozen & Cold storage) ④Contract work & DC center Business (in facility, depot work) ⑤Machinery work Business (Installation and loading in factory) [staff] 611 | 84-28-3872-2845 |
| • Hanoi Branch | 18FL, Icon 4 Building, 243A De La Thanh Street, Lang Thuong, Dong Da, Hanoi, Vietnam | ①Forwarding Business (Import & Export cargo, NVOCC, etc) ②Transpotation Business (Domestic transport, Truck & Trailer & Drayge & cool logistics, etc) ③Warehouse Business (Bonded & Dry & Frozen & Cold storage) ④Contract work & DC center Business (in facility, depot work) ⑤Machinery work Business (Installation and loading in factory) [staff] 79 | 84-24-2220-9498 |
| • Hai Duong Branch / Warehouse | C4 Phuc Dien Industrial Zone, Cam Giang, Hai Duong Province, Vietnam | ①Forwarding Business (Import & Export cargo) ②Transpotation Business (Domestic transport, Truck & Trailer & Drayge & cool logistics, etc) ③Warehouse Business (Bonded & Dry cargo storage) ④Machinery work Business (Installation and loading in factory) [staff] 55 | 84-220-354-6575 |
| • Hai Phong Branch / Warehouse | 1Room 7-8, Fl 7, Thanh Dat Building, 3 Le Thanh Tong Str., May To Ward, Ngo Quyen Dist, Hai Phong City, Vietnam. | ①Forwarding Business (Import & Export cargo) ②Transpotation Business (Domestic transport, Truck & Trailer & Drayge) ③Warehouse Business (Dry cargo storage) ④Machinery work Business (Installation and loading in factory) [staff] 23 | 84-225-3686-126 |
| • Da Nang Branch / Warehouse | Road 11b,Hoa khanh IZ,Hoa Khanh ward, Lien Chieu dist-Da Nang City, Vietnam | ①Forwarding Business (Import & Export cargo, NVOCC, etc) ②Transpotation Business (Domestic transport, Truck & Trailer & Drayge & cool logistics, etc) ③Warehouse Business (Dry cargo storage) ④Machinery work Business (Installation and loading in factory) [staff] 18 | 84-236-3551-759 |
| • Baria Buntau Branch / Warehouse | HighWay 51, My Tan Hamlet, My Xuan Commune, Tan Thanh District, Ba Ria - Vung Tau Province, Vietnam | ①Forwarding Business (Import & Export cargo) ②Transpotation Business (Domestic transport,Heavy material transport) ③Warehouse Business (Dry cargo storage) ④Machinery work Business (Installation and loading in factory) [staff] 68 | 84-254-3893-629 |

Overseas group companies

As of April 1, 2025

Viet Nam

| Company name | Address | Business Details / Staff | TEL |
|---|---|--|-----------------|
| Anpha-AG Joint Stock Company | Lot E02, 2nd Street, Long Hau Industrial Park, Can Giuoc District, Long An Province, Vietnam | ①Frozen and Chilled warehouse ②Engineering [staff] 110 | 84-28-3873-4395 |
| • Hai Duong business location | KM36+880, Pho Mao, Xa Cam Dien, Huyen Cam Giang, Hai Duong Province, Vietnam | ①Engineering [staff] 5 | |
| Vinako Forwarding Co., Ltd. | Unit 02-03-05 Vietnam Airlines Building-The Southern Office 49 Truong Son Str.,Tan Binh District, Ho Chi Minh City, Vietnam | ①Operation business of air cargo ②Custom clearance business ③Domestic transportation business ④Packing business [staff] 70 (Total) | 84-28-3844-6252 |
| • Hanoi Branch | Room No.304 Dmc Tower, 535 Kim Ma Street, Ba Dinh District, Hanoi, Vietnam | | 84-24-2220-9545 |
| BEL International Logistics Vietnam Company Ltd. | 18F Park IX Building, 8 Phan Dinh Giot Street, Ward 2,Tan Binh District, Vietnam | ①Forwarding of import and export cargos ②NVOCC business ③Warehouse business ④Transportation business [staff] 13 | 84-28-3820-1128 |
| • Hanoi Representative Office | Floor 7 , Sannam Building, 78 Duy Tan Street, Cau Giay District, Hanoi City, Vietnam | | 84-24-3710-0946 |

Singapore

| Company name | Address | Business Details / Staff | TEL |
|---|--|--|--------------|
| Konoike Transport & Engineering (S) Pte Ltd. | 10 Anson Road, #20-02 International Plaza, Singapore | ①Forwarding of import and export of ocean and air cargos ②Custom clearance business ③NVOCC business ④Transportation and installation of mechanical equipments, etc. ⑤Contract service (Stuffing, Material supply, Inspection in factory) ⑥Warehouse business [staff] 8 | 65-6220-0010 |

Overseas group companies

As of April 1, 2025

Thailand

| Company name | Address | Business Details / Staff | TEL |
|--|---|--|----------------|
| Konoike Asia (Thailand) Co., Ltd. | 3656/74-75 Green Tower, 22nd Fl, Rama 4 Rd., Klongton, Klongtoey, Bangkok, Thailand | ①Forwarding of import and export cargo ②Truck distribution [staff] 59 | 66-2-026-3584 |
| • Kanchanaburi office | 188/8 Moo.4 Pakprak, Muang, Kanchanaburi. | | 66—61-391-2686 |
| • Lamphun office | 39/1 Moo.1 Chiangmai-Lampang Road, Wiangyong, Muang, Lamphun. | | 66-80-063-9884 |
| Konoike Cool Logistics (Thailand) Co., Ltd. | 335/29 Moo 9 Bangna-Trad Rd.(Km.19), Bangchalong, Banglee, Samutprakarn, Thailand | ①Frozen and Chilled warehouse [staff] 96 | 66-2-337-3013 |
| • Chiang Mai office | 2D, 2nd Floor, 191 Huay Kaew Road, Suthep, Muang Dist., Chiang Mai, Thailand | | |
| • Well Grow office | Wellgrow Industrial Estate, 112 Moo 5, Bangna-Trad Road, Km.36, Bang Samak, Bang Pakong 24180 Chachoengsao, Thailand | ①Contract Operations [Staff] 500(Konoike Cool Logistics (Thailand) Co., Ltd. 5. Konoike-Sotus Venture Co., Ltd. 495) | |
| Konoike-Sotus Venture Co., Ltd. | 10/68 (309), 3rd Floor, The Trendy Building, Soi Sukhumvit 13, Klongtoey Nua, Sub-district, Wattana District, Bangkok, Thailand | ①Business/subsidiary establishment and planning, investment and business support ②Consulting ③Accounting and personnel management [staff] 630 | 66-2-168-7260 |
| Konoike Express (Thailand) Co., Ltd. | 335/29 Moo 9 Bangna-Trad Rd.(Km.19), Bangchalong, Banglee, Samutprakarn, Thailand | ①Frozen & Chilled & Dry cargo Transportation business [staff] 78 | 66-2-337-3023 |

Myanmar

| Company name | Address | Business Details / Staff | TEL |
|----------------------------------|--|--|-------------------------|
| Konoike Myanmar Co., Ltd. | Lot No.C-20, Thilawa SEZ Zone A,Yangon, Myanmar | ①International Forwarding ②Custom Clearance Related Service ③NVOCC business ④Engineering-related Services such as Installation and/or Assemble of Facilities ⑤Warehousing(for General cargo & Bonded cargo) ⑥Packing Processing Service in own Warehouse ⑦Trucking ⑧Supporting Services for Industrial Processing in Customer's Warehouse ⑨Any other business incidental to the foregoing, which may be approved by the Management committee [staff] 39 | 95-1-230-9144/9145/9146 |
| • Yangon Office | 4th floor, Yuzana Hotel, Shwe Gon Taing RD., Bahan Township, Yangon, Myanmar | | 95-1-860-3396 |

Overseas group companies

As of April 1, 2025

Bangladesh

| Company name | Address | Business Details / Staff | TEL |
|---|---|---|----------------|
| Konoike-EURO Logistics (Bangladesh) Ltd. | House No.162, Eastern Road, Lane #3, New Dohs, Mohakhali, Dhaka, Bangladesh | ①Forwarding of import and export cargo [staff] 7 | 880-2-885-0721 |

India

| Company name | Address | Business Details / Staff | TEL |
|---|---|--|--|
| Joshi Konoike Transport & Infrastructure Pvt. Ltd. | M-69, 3rd Floor, Greater Kailash - II, New Delhi, India | ①Container Train Operator ②Automobile Freight Train Operator | 91-11-49577-003/40 |
| SPD India Healthcare Pvt. Ltd. | Z-30, Okhla Industrial Area, Phase-II, New Delhi, India | ①Onsite sterilization services in hospitals ②Offsite sterilization services for hospitals | 91-11-4100-9008 |
| Ferro Scrap Nigam Ltd. | F.S.N.L.Bhawan, Equipment Chowk Central Avenue, Post Box No.37, Bhilai, Dist.-Durg, Chhattisgarh, India | ①Processing of slag (a byproduct generated in the steelmaking process) ②Recovery of metal components contained in slag ③Processing for the purpose of resource utilization of slag ④Logistics operations for steel manufacturing plant [staff] 393 | 91-788-2222474 91-788-2222475 91-788-2854036 91-788-2854037 |
| Konoike India Pvt. Ltd. | Unit No.605 & 606, 6th Floor, The Palm Spring Plaza, Sector 54, Gurugram, Haryana, India | ①International forwarding, ②Engineering, ③Total logistics, ④Packaging service, ⑤Sharing service center to the KONOIKE Group [staff] 30 | 91-84480-09320 |
| Carna Medical Database Pvt. Ltd. | Unit No.605 & 606, 6th Floor, The Palm Spring Plaza, Sector 54, Gurugram, Haryana, India | ①Establishment and distribution of a medical supply database ②Establishment of a logistics network utilizing the medical supply database ③Consultant services utilizing the medical supply database [staff] 9 | 91-124-430-9635/36 |
| India Office | Unit 521, 5th floor, MGF Metropolis Mall, M.G.Road, Gurgaon, Haryana, India | | 91-124-430-9636 |

Germany

| | | |
|--------------------------|---|----------------------|
| Düsseldorf Office | Fritz-Vomfelde-str.34 40547 Düsseldorf, Germany | 49-211-53883-266/267 |
|--------------------------|---|----------------------|



Warehouses / Centers (Domestic)

As of April 1, 2025

| Name | Address | Tel | Structure | Dimensions (m ²) | | | | | |
|--|--|--------------|---------------------|------------------------------|---------|--------|-----------|-----------|--------|
| | | | | Dry | Chilled | Frozen | Automated | Temp-Cntl | Total |
| New Chitose Warehouse | 863-2 Kitashinano, Chitose, Hokkaido 066-0075 | 0123-23-5125 | Steel frame 2 story | 16,500 | | | | | 16,500 |
| Chitose No. 2 Distribution Center | 1034-10 Kamiosatsu, Chitose, Hokkaido 066-0077 | 0123-27-5121 | Steel frame 1 story | 1,600 | 700 | | | 2,200 | 4,500 |
| Sapporo Temperature Controlled Distribution Center | 1-706-1 Shinkonishi, Ishikari, Hokkaido 061-3241 | 0133-73-8661 | Steel frame 1 story | | 700 | 300 | | | 1,000 |
| | | | Steel frame 2 story | 1,200 | | | | 900 | 2,100 |
| | | | Steel frame 2 story | | 900 | 1,200 | | | 2,100 |
| | | | Steel frame 2 story | | 2,900 | 500 | | 1,300 | 4,700 |
| Sendai Temperature Controlled Distribution Center | 9-5-2, Narita, Tomiya, Miyagi, 981-3341 | 022-351-0911 | Steel frame 3 story | | 4,100 | 6,400 | | 1,200 | 11,700 |
| Miyagi Distribution Center | 3-4-7 Yoshioka Higashi, Taiwa-cho, Kurokawa, Miyagi 981-3627 | 022-345-1191 | Steel frame 1 story | 600 | | | | | 600 |
| | | | Steel frame 5 story | 8,000 | 200 | | | | 8,200 |
| Mito Distribution Center | 1249, Kasamatsu, Mukoyama, Naka, Ibaraki 311-0102 | | Steel frame 1 story | 800 | | | | | 800 |
| Funabashi Nishiura Distribution Center | 3-4-1 Nishiura, Funabashi, Chiba 273-0017 | 047-495-4080 | RC 5 story | 15,800 | | | | | 15,800 |
| Ami Distribution Center | 3555-1 Yoshiwara, Ami-machi, Inashiki, Ibaraki 300-0311 | | RC 5 story | 18,000 | | | | | 18,000 |
| Maihama Distribution Center | 10-9 Chidori, Urayasu, Chiba 279-0032 | 047-316-3230 | Steel frame 5 story | 3,500 | | | | 6,600 | 10,000 |
| Chiba Minami Toke Warehouse | 1-6-10 Onodai, Midori-ku, Chiba 267-0056 | 043-295-6091 | Steel frame 2 story | 4,300 | | | | | 4,300 |
| Chiba Minami Ichihara Warehouse | 2-4-39 Tamasakinishi, Ichihara, Chiba 290-0044 | 0436-20-6373 | Steel frame 2 story | 8,000 | | | | | 8,000 |
| Tonegawa Distribution Center | 358-3 Nobecho, Tatebayashi, Gunma 374-0047 | 0276-72-4321 | Steel frame 1 story | 3,000 | 700 | | | | 3,700 |
| | | | Steel frame 2 story | 2,000 | | | | | 2,000 |
| Shibukawa Distribution Center | 280 Handanakahara, Shibukawa, Gunma 377-0004 | 0279-23-8940 | Steel frame 1 story | 1,300 | | | | | 1,300 |
| Kitakanto Distribution Center | 3027-5 Maigi-yokonehara, Chiyodamachi, Ora, Gunma 370-0504 | 0276-70-5141 | Steel frame 2 story | 42,400 | | | | | 42,400 |
| Tsuchiura Distribution Center | 1677-7, Shimoinayoshi, Kasumigaura Shi, Ibaraki 315-0052 | 0299-57-3770 | Steel frame 1 story | 8,200 | | | | | 8,200 |

*Temperature controlled warehouse: Warehouse that is able to maintain a certain temperature (10~20℃)



Warehouses / Centers (Domestic)

As of April 1, 2025

| Name | Address | Tel | Structure | Dimensions (m ²) | | | | | |
|--|---|--------------|---------------------------------------|------------------------------|----------------|--------------|------------------|-----------|-----------------|
| | | | | Dry | Chilled | Frozen | Automated | Temp-Cntl | Total |
| Kanto Temperature Controlled Distribution Center | 300-3 Fukawa, Sugitomachi, Kitakatsushika, Saitama 345-0012 | 0480-36-5525 | Steel frame 3 story | | 7,200 | 7,100 | 9,800PL (Frozen) | | 14,300 |
| Urawa Temperature Controlled Distribution Center | 6-11-5 Shirahata, Minami-ku, Saitama 336-0022 | 048-864-8911 | RC 4 story | 200 | 3,200 | | | | 3,400 |
| Koshigaya Temperature Controlled Distribution Center | 2-3-4 Ryutsudanchi, Koshigaya, Saitama 343-0824 | 048-985-4321 | Steel frame 2 story RCS 4 story | 1,400 | 1,300 4,000 | 100 9,400 | | | 2,800 13,400 |
| Ome Distribution Center(No.1) | 2-9-13 Suehirocyo, Ome, Tokyo 198-0025 | 0428-78-2084 | Steel frame 3 story | 62,800 | | | | 900 | 63,700 |
| Ome Distribution Center(No.2) | 3-8-4 Imai, Ome, Tokyo 198-0023 | 0428-32-4551 | Steel frame 5 story | 9,100 | 200 | | | | 9,300 |
| Kunitachi Distribution Center | 2-6-2 Izumi, Kunitachi, Tokyo 186-0012 | 042-580-1071 | RC 6 story | 21,700 | | | | | 21,700 |
| Oi Distribution Center | 4-7-7 Tokai, Ota-ku, Tokyo 143-0001 | 03-3790-0091 | RC 5 story | 9,100 | | | | 800 | 9,900 |
| Tokyo Railgate Office (Konoike Railgate) | 6th floor, Tokyo Railgate WEST, 3-3-22 Yashio, Shinagawa-ku, Tokyo 140-0003 | 03-5755-9338 | Steel frame 6 story | 8,000 | | | | | 8,000 |
| Daikoku Distribution Center | 22 Daikoku futo, Tsurumi-ku, Yokohama 230-0054 | 045-510-2222 | RC 5 story (part of the 3rd floor) | 4,300 | | | | | 4,300 |
| Ebina Distribution Center | 5-18-1 Nakashinden, Ebina, Kanagawa 243-0422 | 046-205-6367 | RC 4 story | 33,900 | | | | | 33,900 |
| Kurami Warehouse | 694-3 Kurami, Samukawamachi, Koza, Kanagawa 253-0101 | 0467-75-3672 | Steel frame 2 story | | 1,100 | | | | 1,100 |
| Sagami Food Distribution Center | 1435-1 Kaneda, Atsugi, Kanagawa 243-0807 | 046-297-7107 | RC 2 story | | 4,300 | 3,800 | | | 8,100 |
| Atsugi Distribution Center | 2500-1 Toda, Atsugi, Kanagawa 243-0023 | 046-229-6463 | RC 5 story | 11,500 | 1,600 | 500 | | | 13,600 |
| | | | RC 5 story | 16,400 | | | | | 16,400 |
| | | | RC 5 story | 13,000 | | | | | 13,000 |
| Atsugi Temperature Controlled Distribution Center | 4070-1 Nakatsu-sakuradai, Aikawamachi, Aiko, Kanagawa 243-0303 | 046-285-2180 | RC 8 story | | 1,600 | 8,800 | 3,400PL (Frozen) | | 10,400 |

*Temperature controlled warehouse: Warehouse that is able to maintain a certain temperature (10~20℃)



Warehouses / Centers (Domestic)

As of April 1, 2025

| Name | Address | Tel | Structure | Dimensions (m ²) | | | | | |
|---|--|--------------|---|------------------------------|---------|--------|----------------|-----------|--------|
| | | | | Dry | Chilled | Frozen | Automated | Temp-Cntl | Total |
| Kanagawa Chuo Distribution Center | 4009-3 Nakatsu-sakuradai, Aikawamachi, Aiko, Kanagawa 243-0303 | 046-280-4333 | RC 6 story | 13,700 | | | | | 13,700 |
| Kanagawa Ayase Distribution Center | 8-27-1 Fukayakami, Ayase, Kanagawa 252-1108 | 0467-71-5605 | Steel frame 3 story | 11,300 | | | 61,000PL (Dry) | | 11,300 |
| Nigata Distribution Center | 5-1923-13 Higashiko, Seiromachi, Kitakanbara, Niigata 957-0101 | 025-256-1601 | Steel frame 1 story | 2,300 | 900 | | | | 3,200 |
| Azumino Distribution Center | 1110 Hotakamaki, Azumino, Nagano 339-8305 | 0263-87-7140 | Steel frame 1 story | 19,000 | | | | 100 (30℃) | 19,100 |
| Shizuoka Temperature Controlled Distribution Center | 640-2 Yawata, Fujieda, Shizuoka 426-0009 | 054-643-4321 | Steel frame 1 story | | 1,500 | 1,000 | | | 2,500 |
| Fukuroi Distribution Center | 153-1 Icchoda Oyama, Fukuroi, Shizuoka 437-0056 | 0538-41-3617 | Steel frame 2 story | 24,300 | | | 10,000PL (Dry) | | 24,300 |
| Nagaizumi Distribution Center | 359 Kaminagakubo, Nagaizumicyo, Suntogun, Shizuoka 411-0935 | 055-989-2104 | Steel frame 2 story | 6,200 | 9,000 | 300 | | 10,700 | 26,200 |
| Nagoya Temperature Controlled Distribution Center | 2-201-2 Fujimae, Minato-ku, Nagoya 455-0855 | 052-303-5813 | Steel frame 3 story | | 4,300 | 4,200 | | | 8,500 |
| Obu Distribution Center | 1-1 Toyama, Kitasaki-Machi, Obu, Aichi 474-0001 | 0562-38-6641 | Steel frame 4 story (1st and 2nd floor) | 26,200 | 300 | | | | 26,500 |
| Aisai Distribution Center | 6-1 Yosenouchi, Nishihocyou, Aisai, Aichi 490-0911 | 0567-24-7001 | Steel frame 3 story | 14,900 | 100 | | 1,500PL (Dry) | | 15,000 |
| Shiga Distribution Center | 1601-1 Oshinohara, Yasu, Shiga 520-2313 | 077-587-3300 | Steel frame 3 story | 10,300 | | | | | 10,300 |
| Kyoto Joyo Distribution Center | 1-2 Tono-ikenouchi, Joyo, Kyoto 610-0111 | 0774-52-5151 | Steel frame 2 story | 30,400 | 300 | | | | 30,700 |
| Ajigawa Warehouse | 1-5-34 Ishida, Minato-ku, Osaka 552-0006 | 06-6573-2721 | RC 2 story | 3,800 | | | | | 3,800 |
| | | | RC 3 story | 3,200 | | | | 5,500 | 8,700 |
| Harbour Transportation Department L-1 Storage sheds | 8-2-31 Nankonaka, Suminoe-ku, Osaka 559-0033 | 06-6612-3421 | Steel frame 1 story | 2,800 | | | | | 2,800 |
| Nanko R Distribution Center | 2-3-59 Nankokita, Suminoe-ku, Osaka 559-0034 | 06-6614-1288 | Steel frame 3 story | 11,600 | | | | 1,800 | 13,400 |

*Temperature controlled warehouse: Warehouse that is able to maintain a certain temperature (10~20℃)



Warehouses / Centers (Domestic)

As of April 1, 2025

| Name | Address | Tel | Structure | Dimensions (m ²) | | | | | |
|--|---|--------------|---|------------------------------|---------|--------|-------------------------|-----------|--------|
| | | | | Dry | Chilled | Frozen | Automated | Temp-Cntl | Total |
| Osaka General Distribution Center | 7-4-110 Nankonaka, Suminoe-ku, Osaka 559-0033 | 06-6613-1851 | RC 3 story | 10,800 | | | | | 10,800 |
| Suminoe Distribution Center | 2-8-76 GLP Osaka II Shibatani, Suminoe-ku, Osaka 559-0021 | 06-6115-3380 | RC 4 story (3rd, 4th floor) | 43,600 | | | | | 43,600 |
| Osaka Temperature Controlled Distribution Center | 2-2-6 Mishimae, Takatsuki, Osaka 569-0835 | 072-677-7755 | RC 5 story | | 2,000 | 4,300 | | | 6,300 |
| Osaka Hokko Temperature Controlled Distribution Center | 1-6-10 Hokkoshiratsu, Konohana-ku, Osaka 554-0041 | 06-6467-1800 | Steel frame 4 story | | 12,700 | 6,000 | 15,000PL (Frozen · Dry) | | 18,700 |
| Maishima Steel Distribution Center | 1-12-38 Hokkoshiratsu, Konohana-ku, Osaka 554-0041 | 06-6225-7911 | Steel frame 1 story | 3,900 | | | | | 3,900 |
| Osaka Hokko Distribution Center | Prologis park-maishima III, 2-1-37 Hokkoryokuchi, Konohana-ku, Osaka 554-0042 | 06-4804-5666 | Steel frame 7 story (1st, 2nd and 3rd floor) | 33,300 | 500 | | | 1,600 | 35,400 |
| Konohana Distribution Center | 2-4-35 Hokko, Konohana-ku, Osaka 554-0033 | 06-6461-1150 | Steel frame 6 story | 12,800 | | | | | 12,800 |
| Torishima Distribution Center | 5-11-81 Torishima, Konohana-ku, Osaka 554-0051 | 06-6464-3022 | Steel frame 4 story (3 rd & 4 th floor) | 21,685 | | | | | 21,685 |
| Higashi Osaka Distribution Center | 1-43 Honjohigashi, Higashi Osaka, Osaka 578-0952 | 06-6744-0271 | Steel frame 4 story | 12,700 | | | | 4,500 | 17,200 |
| Nishi Osaka Distribution Center | 2-13-33 Nakajima, Nishiyodogawa-ku, Osaka 555-0041 | 06-6476-3420 | Steel frame 4 story | 64,000 | | | | | 64,000 |
| Kobe Higashi Warehouse | 4-15-1 Koyochohigashi, Higashinada-ku, Kobe 658-0031 | 078-846-0851 | Steel frame 1 story | 1,500 | | | | | 1,500 |
| Okayama Hayashima Distribution Center | 3489-1 Mishima, Minami-ku, Okayama 701-0206 | 086-238-1331 | Steel frame 2 story | 10,700 | 200 | | | | 10,900 |
| Maniwa Distribution Center | 202-11 Nakabara, Maniwa, Okayama 719-3225 | 0867-45-0367 | Steel frame 2 story | 10,200 | | | | | 10,200 |
| Hiroshima Distribution Center | 2-3-5 Tomominami, Asaminami-ku, Hiroshima 731-3168 | 082-849-5228 | Steel frame 1 story | 2,200 | 800 | 500 | | | 3,500 |
| Yamaguchi Distribution Center | 1003-40 Shimoosaba, Yamaguchi, Yamaguchi 753-0212 | 083-927-1414 | Steel frame 2 story | 6,800 | 400 | | | | 7,200 |

*Temperature controlled warehouse: Warehouse that is able to maintain a certain temperature (10~20℃)

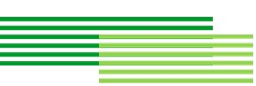


Warehouses / Centers (Domestic)

As of April 1, 2025

| Name | Address | Tel | Structure | Dimensions (m ²) | | | | | |
|--|--|--------------|---------------------|------------------------------|---------|--------|-----------|-----------|-------|
| | | | | Dry | Chilled | Frozen | Automated | Temp-Cntl | Total |
| Fukuoka Temperature Controlled Distribution Center | 5-5-20 Hakozaki futo, Higashi-ku, Fukuoka 812-0051 | 092-631-4323 | Steel frame 2 story | 800 | 500 | 800 | | | 2,100 |
| Saga Distribution Center | 5005 Sonobe-Kiyamacho, Miyaki, Saga 841-0203 | 0942-81-4870 | Steel frame 3 story | 9,700 | | | | | 9,700 |

*Temperature controlled warehouse: Warehouse that is able to maintain a certain temperature (10~20℃)



Warehouses / Centers (Domestic)

As of April 1, 2025

| Name | Address | Tel | Dimensions (㎡) |
|--|---|--------------|----------------|
| Konoike Transport Co., Ltd. Engineering factories | | | |
| Wakayama Engineering Factory | 1850 Minato, Wakayama Inside Kansai Works Wakayama Area, Nippon Steel Corporation 640-8555 | 073-455-3366 | 2,000 |
| Yawata Engineering Factory | 1-3-25 Higashiminato, Kokurakita-ku, Kitakyusyu 803-0802 | 093-562-6820 | 600 |
| Kashima Engineering Factory | 2279-6 Hirai, Kashima, Ibaraki 314-0012 | 0299-84-6455 | 4,300 |
| Chubu Nagoya Office | 1-36-1 Kanseicho, Minato-ku, Nagoya 455-0066 | 052-651-7126 | 800 |
| Toyohashi Office | 3-14-20 Honohara, Toyokawa, Aichi 442-0061 | 0533-85-5611 | 1,200 |
| Hokuriku Office | 282 Takaki, Imizu, Toyama 934-0047 | 0766-82-2223 | 500 |
| Techno Service Osaka Office | 4-14-34 Tsurumachi, Taisho-ku, Osaka 551-0023 | 06-6555-7670 | 2,500 |
| Techno Service Soka Office | 2-4-38 Hanaguri, Soka, Saitama 340-0044 | 048-921-8600 | 3,300 |
| TechnoLogis Makuhari Office | 2-3-1 Shibazono, Narashino, Chiba 275-0023 | 047-409-4600 | 23,300 |

Food Processing factory

| | | | |
|--------------------|--|--------------|-------|
| Osaka Kizu Factory | 2-2-8 Shikitsuhigashi, Naniwa-ku, Osaka 556-0012 | 06-6630-6155 | 1,000 |
|--------------------|--|--------------|-------|



Warehouses / Centers (Domestic group companies)

As of April 1, 2025

| Name | Address | Tel | Dimensions (㎡) |
|---|--|--------------|----------------|
| Konoike Medical Co., Ltd. | | | |
| Sapporo Office (Sapporo Logistics·Washing Center) | 1-9-3 Higashi, Minami 6-jo, Chuo-ku, Sapporo, Hokkaido 060-0056 | 011-511-8883 | 200 |
| Akita Office (Akita Sterilization Center) | 11-1 Iwakifutago-mukaimura, Yurihonjo, Akita 018-1305 | 0184-73-3221 | 1,000 |
| Miyagi Office (Miyagi Sterilization Center) | 3-8-2 Yoshiokahigashi, Taiwacho, Kurokawa, Miyagi 981-3627 | 022-345-5511 | 800 |
| Tochigi Office (Tochigi Sterilization Center) | 62-3 Hagadai, Hagamachi, Haga, Tochigi 321-3325 | 028-677-1215 | 1,000 |
| Saitama Office (Saitama Sterilization Center) | 3-5-24 Nizominami, Toda, Saitama 335-0026 | 048-430-4555 | 1,000 |
| Chiba Office (Chiba Sterilization Center) | 8-6 Goi-minamikaigan, Ichihara, Chiba 290-0045 | 0436-24-6301 | 900 |
| Tokyo Office (Tokyo Sterilization Center) | 5-9-12 Tachibana, Sumida-ku, Tokyo 131-0043 | 03-3613-1691 | 1,300 |
| Tokyo Logistics Office(Tokyo Logistics·Washing Center) | 1-5-21 Katsushima, Shinagawa-ku, Tokyo 140-0012 | 03-5753-3151 | 18,290 |
| Tokyo Logistics Office, Center 2 | Tokyo Distribution Center, Building A, 4th floor, 6-1-1 Heiwajima Ota-ku, Tokyo | 03-5753-3151 | 6,990 |
| Yokohama Office | 2-2-15 Shinyokohama, Kouhoku-ku, Yokohama 222-0033 | 045-476-2650 | 20 |
| Nagoya Office | 2-14-19 Meiekinami, Nakamura-ku, Nagoya 450-0003 | 052-686-0012 | 700 |
| Nagoya Office (Ichinomiya Sterilization Center) | 1-11-30 Denpoji, Ichinomiya, Aichi 491-0822 | 0586-76-8222 | 600 |
| Osaka Office (Osaka Sterilization Center) | 3-59 Hamaderafunaocho-nishi, Nishi-ku, Sakai 592-8342 | 072-261-2750 | 700 |
| Osaka Logistics Office (Osaka Logistics·Washing Center) | ATC 2-1-10 Nanko-kita, Suminoe-ku, Osaka 559-0034 | 06-4703-5286 | 3,344 |

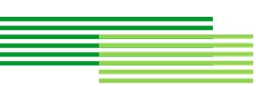
Warehouses / Centers (Domestic group companies)

As of April 1, 2025

| Name | Address | Tel | Dimensions (㎡) |
|---|---|--------------|----------------|
| Hyogo Office (Hyogo Washing Center) | 1957-1 Okashita, Nishifutamiya, Futamicho, Akashi, Hyogo 674-0094 | 078-942-7638 | 300 |
| Hiroshima Office (Hiroshima Sterilization Center) | 3-74-25 Minamimyojinmachi, Kaitacho, Aki, Hiroshima 736-0055 | 082-824-1551 | 1,000 |
| Kanmon Office (Kanmon Sterilization Center) | 1-43-56 Chofusaigawa, Shimonoseki, Yamaguchi 752-0928 | 0832-49-2277 | 1,300 |
| Fukuoka Logistics Office (Fukuoka Logistics Washing Center) Fukuoka Office | Hakkou Distribution Center, 7nd floor, 8-5-75 Yoshizuka, Hakata-ku, Fukuoka 812-0041 | 092-627-1681 | 2,500 |

Kyushu Sanko Unyu Co., Ltd.

| | | | |
|--|---|--------------|--------|
| Kyushu North Branch Nakakyushu Center | 1450-1 Ogoori, Ogoori-shi, Fukuoka 838-0141 | 0942-72-4131 | 25,200 |
| Kyushu South Branch Kumamoto Food Center | 2-20-3 Ryutsudanchi, Minami-ku, Kumamoto 862-8635 | 096-334-7111 | 800 |
| Strage Room | 2-20-3 Ryutsudanchi, Minami-ku, Kumamoto 862-8635 | 096-377-2435 | 1,800 |



Warehouses / Centers (Domestic group companies)

As of April 1, 2025

| Name | Address | Tel | Structure | Dimensions (m ²) | | | | | |
|---------------------------|--|--------------|---------------------|------------------------------|---------|--------|-----------|-----------|-------|
| | | | | Dry | Chilled | Frozen | Automated | Temp-Cntl | Total |
| Japan Airways Co., Ltd. | | | | | | | | | |
| Tokyo Distribution Center | 1-5-21 Katsushima, Shinagawa-ku, Tokyo 140-0012 | 03-5762-7013 | Steel frame 6 story | 3,100 | 100 | 100 | | | 3,300 |
| Osaka Chuo Office | 1-27-20 Nishikujo, Konohana-ku, Osaka 554-0012 | 06-6461-4551 | Steel frame 6 story | 1,500 | | | | | 1,500 |
| Kansai Airport Center | 5-6 Rinkuoraikita, Izumisano, Osaka 598-0048 | 072-458-2381 | Steel frame 1 story | 1,900 | 100 | | | | 2,000 |
| Fukuoka Airport Center | 3-22-31 Higashihiie, Hakata-ku, Fukuoka 812-0007 | 092-474-4411 | Steel frame 4 story | 700 | | | | | 700 |

Kanriku Co., Ltd.

| | | | | | | | | | |
|---|--|--------------|---------------------------------------|--------|-----|-----|--|-------|--------|
| Takamatsu Office (Takamatsu Distribution Center) | 121-20 Showa, Sanuki, Kagawa 769-2304 | 0879-24-9101 | Steel frame 1 story | 12,800 | | | | | 12,800 |
| Sakaide Office | 4285-315 Hayashidacho-banyamae, Sakaide, Kagawa 762-0012 | 0877-47-2138 | Steel frame 1 story | 10,500 | | | | | 10,500 |
| Matsuyama Grocery Center | 2882-5 Minamigata, Toon, Ehime 791-0301 | 089-966-1516 | Steel frame 3 story | 32,800 | 900 | | | | 33,700 |
| Osaka Distribution Office | 2-13-5, Nakashima, Nishiyodogawa-ku, Osaka 550-0041 | 06-6475-2005 | RC 4 story (part of the 3rd floor) | 900 | | | | | 900 |
| Ouchida Warehouse | 725 Ouchida, Kita-ku, Okayama, Okayama 701-0165 | 086-293-5721 | Some steel frame, 2 story | 6,200 | | | | 3,900 | 10,100 |
| Hayashima Warehouse | 783-2 Yao, Hayashimacho, Tsukubo, Okayama 701-0301 | 086-293-5261 | Steel frame 2 story | 3,100 | 900 | 700 | | 1,300 | 6,000 |

Sano Unyu Co., Ltd.

| | | | | | | | | | |
|---|---|--------------|---------------------|-------|--|--|--|--|-------|
| Maya Distribution Center | Maya distribution center East building, Maya futo, Nada-ku, Kobe 657-0854 | 078-805-6155 | Steel frame 1 story | 4,000 | | | | | 4,000 |
| Kobe koto Port Transportation Cooperative Association | Minatojimamachi-3chome, Chuo-ku, Kobe 650-0045 | 078-303-0061 | Steel frame 2 story | 6,000 | | | | | 6,000 |

*Temperature controlled warehouse: Warehouse that is able to maintain a certain temperature (10~20℃)

Warehouses / Centers (Overseas group companies)

As of April 1, 2025

| Name | Name of Warehouse | Structure | Dimensions (m ²) | | | | |
|---|---|-------------------------------|------------------------------|---------|--------|-----------|--------|
| | | | Dry | Chilled | Frozen | Temp-Cntl | Total |
| Konoike-Pacific California, Inc. | KPC | Rack Support Type | | 2,700 | 8,500 | | 11,200 |
| Konoike-General, Inc. | KGI South Gate | Rack Support Type | | 2,000 | 5,100 | | 7,100 |
| Konoike-E Street, Inc. | KES | Rack Support Type | | 800 | 7,100 | | 7,900 |
| Konoike Transport & Engineering (H.K.) Ltd. | Tuen Mun Warehouse | RC 21 story | 2,600 | | | | 2,600 |
| | Chengyang district Domestic Warehouse | High floor type 1 story | 6,800 | | | | 6,800 |
| Konoike Logistics (Shanghai) Co., Ltd. | Waigaoqiao Baoshuiqu Warehouse (bonded) | Steel frame 1 story | 4,400 | | | | 4,400 |
| Konoike Asia (Jiangsu) Co., Ltd. | Temperature-Controlled Logistics Center | Steel frame 1 story | | | | 8,600 | 8,600 |
| BEL International Logistics Ltd. | Transhore Warehouse Transportation Co., Ltd. | RC | 2,000 | | | | 2,000 |
| BEL Supply Chain Solutions Ltd. | BELSCS Mita | RC | 1,332 | | | | 1,332 |
| Qingdao Cosco Konoike Logistics Co., Ltd. | Qingdao Cosco Konoike Logistics Co.,Ltd. Chengyang district Domestic Warehouse | RC High floor type 1 story | | 1,400 | 2,900 | | 4,300 |
| | | | 6,800 | | | | 6,800 |
| Konoike Vinatrans Logistics Co., Ltd. | Frozen Refrigerated Warehouse | All high floor type warehouse | | 300 | 700 | | 1,000 |
| | Dry Warehouse (Head office) | Steel frame 1 story | 3,000 | | | | 3,000 |
| | DC Center Warehouse (for Family Mart) | Steel frame 1 story | 3,100 | | | | 3,100 |
| | Hai Duong Bonded Warehouse (Phuc dien) | All high floor type warehouse | 3,400 | | | 700 | 4,100 |
| | Hai Duong Normal Warehouse (Phuc dien) | All high floor type warehouse | 7,300 | | | | 7,300 |
| | Dinh Vu Dry Warehouse (Hai Phong) | All high floor type warehouse | 1,800 | | | | 1,800 |
| | JVI Warehouse (Tanh Hoa) | Steel frame 1 story | 5,000 | | | | 5,000 |
| | Da Nang Dry Warehouse (Da Nang) | Steel frame 1 story | 3,500 | | | | 3,500 |
| | Ba Ria Dry Warehouse (Baria Bung Tau) | Steel frame 1 story | 1,200 | | | | 1,200 |

*Temperature controlled warehouse: Warehouse that is able to maintain a certain temperature (10~20℃)

Warehouses / Centers (Overseas group companies)

As of April 1, 2025

| Name | Name of Warehouse | Structure | Dimensions (m ²) | | | | |
|--|-----------------------|---------------------|------------------------------|---------|--------|-----------|-------|
| | | | Dry | Chilled | Frozen | Temp-Cntl | Total |
| Anpha-AG Joint Stock Company | ANPHA-AG | Steel frame 1 story | | 1,500 | 8,000 | | 9,500 |
| Konoike Transport & Engineering (S) Pte.Ltd. | Senoko Food Warehouse | RC | | | | 1,000 | 1,000 |
| | Pioneer Warehouse | RC | 1,800 | | | | 1,800 |
| Konoike Asia (Thailand) Co., Ltd. | KAT Bang-Na DC | RC | 3,000 | | | | 3,000 |
| | KAT THEPARAK WH | Steel frame 1 story | 6,600 | | | | 6,600 |
| | KAT LAMPHUN WH | Steel frame 1 story | 6,000 | | | | 6,000 |
| Konoike Cool Logistics (Thailand) Co., Ltd. | KCLT | Steel frame 1 story | | 4,600 | 3,800 | 1,500 | 9,900 |
| Konoike Myanmar Co., Ltd. | KMC | Steel frame 1 story | 2,500 | | | | 2,500 |

*Temperature controlled warehouse: Warehouse that is able to maintain a certain temperature (10~20℃)

Business license, permission, and registration (Domestic)

As of April 1, 2025

Konoike Transport Co., Ltd.

| Classification | Name of licence, permission, and registration |
|---|---|
| Food | Food sales and marketing |
| Maritime cargo transportation Land transportation Air cargo transportation Warehouse Customs clearance | Port transportation business |
| | Port worker dispatch business |
| | Ocean transportation business (overseas shipping) |
| | General cargo truck transportation business |
| | Type 1 cargo transportation business |
| | Type 2 cargo transportation business |
| | Specified air cargo transportation business |
| | Air cargo transport agency business |
| | Warehouse business |
| | Bonded warehouse |
| | Customs clearance business |
| Engineering | General construction business |
| | Type 1 Fluorocarbons collections business |
| Worker dispatch | Worker dispatch |
| Other | Designation of export/import inspection location for livestock products |
| | Meat sales business |
| | Managed care instrument sales business |
| | Specially controlled medical devices sale/lease |
| | Medical equipment manufacturing industry |
| | Quasi drug manufacturing business |
| | Cosmetics manufacturing business |
| | Automobile dismantle and maintenance business |
| | Industrial wastes collections and transportation business |
| | Oil distribution business |
| | Secondhand store |
| | Specified letter delivery business |
| | Forklift truck operation skills training: registered training institution |
| | Inspection agent: registered |
| | Matal scrap industry |

Business license, permission, and registration (Domestic)

As of April 1, 2025

Konoike Medical Co., Ltd.

| Classification | Line of Business |
|----------------------|--|
| Truck transportation | Type 1 cargo transportation business |
| Worker dispatch | Worker dispatch business |
| Other | Medical equipment manufacturing industry (registered) |
| | Third-class medical device manufacturing and sales license |
| | Advanced medical management device sales and rental (licensed) |
| | Medical equipment repair business (licensed) |
| | Medical management device sales (notified) |
| | Pharmaceutical wholesale (licensed) |
| | Cosmetics manufacturing (licensed) |
| | Hospital cleaning |
| | Hospital sterilizing |
| | Sterilizing outside hospital |

Kyushu Sanko Unyu Co., Ltd.

| Classification | Line of Business |
|--|--|
| Air cargo / Rail cargo transportation / Coastal transportation | Type 2 cargo transportation business Customs clearance business |
| Truck transportation | General cargo truck transportation business Light cargo transportation business |
| Warehouse | Warehouse business |
| Industrial waste | Industrial waste disposal business |
| | Specially controlled industrial waste collections and transportation business |
| Worker dispatch | Worker dispatch business |
| Other | Specified letter delivery business |
| | Medicinal products wholesale trade |
| | Medicinal products for animals wholesale trade |
| | Chilled or freeze food business |

Japan Airways Co., Ltd.

| Classification | Line of Business |
|--|--|
| Air cargo / Rail cargo transportation / Coastal transportation | Type 2 cargo transportation business Air cargo transport agency business |
| Truck transportation | Type 1 cargo transportation business General cargo truck transportation business Light cargo transportation business |
| Warehouse | Warehouse business |
| Industrial wastes | Industrial wastes collections and transportation business |
| Other | Travel agency |
| | Specified letter delivery business |

Kanriku Co., Ltd.

| Classification | Line of Business |
|----------------------|---|
| Truck transportation | General cargo truck transportation business |
| | Type 1 cargo transportation business |
| | Type 2 cargo transportation business |
| | Light cargo transportation business |
| | Customs clearance business |
| Warehouse | Warehouse business |
| | Bonded warehouse |
| Industrial wastes | Industrial wastes collections and transportation business |
| Worker dispatch | Worker dispatch business |
| Employment agency | Fee charging employment agency |
| Other | Measuring certification business |

Business license, permission, and registration (Domestic)

As of April 1, 2025

Konoike Air Port Service Co., Ltd.

| Classification | Line of Business |
|----------------------|---|
| Truck transportation | Type 1 cargo transportation business |
| | Type 2 cargo transportation business |
| Other | Business rights at Kansai International Airport |
| Worker dispatch | Worker dispatch business |

Konoike Sky Support Co., Ltd.

| Classification | Line of Business |
|-----------------|--|
| Worker dispatch | General worker dispatch business |
| Other | Business rights at Tokyo International Airport |

K Sky Co., Ltd.

| Classification | Line of Business |
|-----------------|---|
| Ground Service | Business rights at Kansai International Airport |
| | Business rights at Tokyo International Airport |
| Worker dispatch | Worker dispatch business |

K Ground Service Co., Ltd.

| Classification | Line of Business |
|--------------------------|---|
| Air cargo transportation | Customs clearance business |
| | Bonded warehouse |
| | Business rights at Kansai International Airport |
| | Business rights at Tokyo International Airport |
| Worker dispatch | Worker dispatch business |
| Other | Antiques business |

K Ground Expert Co., Ltd.

| Classification | Line of Business |
|-----------------|--------------------------|
| Worker dispatch | Worker dispatch business |
| Other | Antiques business |

Japan Airport Service Co., Ltd.

| Classification | Line of Business |
|-------------------------|---|
| Ground handling service | Business rights at Narita International Airport |

Airport Terminal Service Co., Ltd.

| Classification | Line of Business |
|-----------------|---|
| Ground Service | Business rights at Narita International Airport |
| Worker dispatch | Worker dispatch business |

Air Express, Inc.

| Classification | Line of Business |
|-----------------|--------------------------|
| Worker dispatch | Worker dispatch business |

Business license, permission, and registration (Domestic)

As of April 1, 2025

Eco Innovation Inc.

| Classification | Line of Business |
|------------------|---|
| Industrial waste | Industrial waste disposal business |
| | Specially controlled industrial waste disposal business |
| | Industrial waste collections and transportation business |
| | Specially controlled industrial waste collections and transportation business |
| Worker dispatch | Worker dispatch business |
| Other | Scrap metal sales |

ASR Recycling Kashima Co., Ltd.

| Classification | Line of Business |
|----------------|------------------------------------|
| Waste | Industrial waste disposal business |
| | General waste disposal business |

Konoike Express Co., Ltd.

| Classification | Line of Business |
|----------------------|---|
| Truck transportation | General cargo truck transportation business |
| | Type 1 cargo transportation business |
| Industrial waste | Industrial waste collections and transportation business |
| | Specially controlled industrial waste collections and transportation business |
| Other | Specified automobile maintenance business |

Konohana Transport Co., Ltd.

| Classification | Line of Business |
|----------------------|---|
| Truck transportation | General cargo truck transportation business |
| | Type 1 cargo transportation business |
| Engineering | Construction business |

Sano Unyu Co., Ltd.

| Classification | Line of Business |
|----------------------------------|--------------------------------------|
| Ocean / Air cargo transportation | Port transportation business |
| | Customs clearance business |
| Truck transportation | Type 1 cargo transportation business |

Chuden Sangyo Co., Ltd.

| Classification | Line of Business |
|------------------|--|
| Worker dispatch | Worker dispatch business |
| Industrial waste | Industrial waste collections and transportation business |
| Engineering | Construction business |

Konoike Shipping Co., Ltd.

| Classification | Line of Business |
|----------------------|--------------------------------------|
| Ocean transportation | Type 1 cargo transportation business |
| | Type 2 cargo transportation business |
| Truck transportation | Type 1 cargo transportation business |

Business license, permission, and registration (Domestic)

As of April 1, 2025

NBS Inc.

| Classification | Line of Business |
|-----------------|--------------------------|
| Worker dispatch | Worker dispatch business |

Chiyoda Inspection Industries Co., Ltd.

| Classification | Line of Business |
|----------------|---|
| Engineering | Type C nondestructive inspection business |
| Other | Measurement certification business |

Konoike Corporate Service Co., Ltd.

| Classification | Line of Business |
|----------------------|---|
| Truck transportation | Type 1 cargo transportation business |
| Engineering | Building environment and sanitation management business |
| Worker dispatch | Worker dispatch business |
| Other | Security business |
| | Antiques business |
| | Scrap metal sales |
| | Building insect control business |
| | Hospital cleaning |
| | Building Drinking Water Storage Tank Cleaning |

Nichiun Co., Ltd.

| Classification | Line of Business |
|----------------------------------|--|
| Ocean / Air cargo transportation | Port transportation business Customs clearance business |
| Truck transportation | Type 1 transportation business |

Business license, permission, and registration (Overseas)

As of April 1, 2025

Konoike-Pacific California, Inc.

| Classification | Line of Business |
|----------------------|---|
| Truck transportation | Licensed for California truck business(CA#0296554) |
| Warehouse / Food | USDA specification inspection place FDA registered(BIOTERRORISM ACT) |

Konoike-General, Inc.

| Classification | Line of Business |
|----------------|---|
| Warehouse | Warehouse business (frozen and chilled) |

Konoike-E Street, Inc.

| Classification | Line of Business |
|----------------|--|
| Warehouse | USDA specification inspection place Warehouse business (frozen and chilled) |

Konoike Transport & Engineering (USA), Inc.

| Classification | Line of Business |
|----------------------------|------------------------------|
| Ocean cargo transportation | NVOCC※1(FMC LICENCE #16977N) |

Konoike Transport & Engineering (H.K.) Ltd.

| Classification | Line of Business |
|--------------------------------|--------------------------------|
| Ocean cargo transportation | Transport & Warehouse business |
| Truck transportation | |
| Warehouse / Dry | |
| Food Importer/Food Distributor | |

Konoike Logistics (Shenzhen) Co., Ltd.

| Classification | Line of Business |
|----------------------------|---|
| Ocean cargo transportation | NVOCC※1 |
| Truck transportation | International cargo transportation agency outside bond district |
| Warehouse / Dry | Warehouse business at bonded area |
| Engineering | Licensed for facility installation and maintenance |
| International trade | International trade business |

Konoike Logistics (Shanghai) Co., Ltd.

| Classification | Line of Business |
|----------------------------|--|
| Ocean cargo transportation | NVOCC※1 |
| Warehouse / Dry | Bonded warehouse business |
| International trade | International trade business |
| Truck transportation | Dry cargo transportation / Chilled cargo transportation |
| | International cargo transportation agency |
| | Licensed for truck transport of bonded cargo authorized by the Customs |
| Engineering | Licensed for facility installation and maintenance |

※1 NVOCC: Business licensed as a non vessel operating common carrier.

Business license, permission, and registration (Overseas)

As of April 1, 2025

Konoike Asia (Jiangsu) Co., Ltd.

| Classification | Line of Business |
|----------------------------|--|
| Ocean cargo transportation | Forwarding business |
| Warehouse / Dry | Warehouse business |
| Truck transportation | Dry cargo transportation / Chilled cargo transportation International cargo transportation agency |
| Engineering | Licensed for facility installation and maintenance |

BEL International Logistics Ltd.

| Classification | Line of Business |
|----------------------------|---|
| Air cargo transportation | IATA Air Transport Sales Agency Services 1st category Radio dealers license |
| Ocean cargo transportation | NVOCC※1, FIATA |
| Warehouse / Dry | Bonded warehouse business |
| Truck transportation | Warehouse business at part of bonded area |

Qingdao Cosco Konoike Logistics Co., Ltd.

| Classification | Line of Business |
|----------------------------|---|
| Ocean cargo transportation | NVOCC※1 |
| Warehouse / Food | Warehouse business at part of bonded area |

PT.Konoike Transport Indonesia

| Classification | Line of Business |
|----------------------------|---------------------|
| Ocean cargo transportation | Forwarding business |

Konoike Vinatrans Logistics Co., Ltd.

| Classification | Line of Business |
|----------------------------|---|
| Ocean cargo transportation | NVOCC※1 |
| Truck transportation | Ground transportation business (Dry/Child/International cargo) |
| Warehouse / Food | Warehouse business |
| Engineering | Construction and Installation and Maintenance |

Anpha-AG Joint Stock Company

| Classification | Line of Business |
|-------------------|---|
| Warehouse / Food | Warehouse business |
| Transportation | Track Agency Licence |
| Machinery process | Manufacturing and processing of machinery |
| Food process | Food process |
| Construction | Construction and Install of machinery |

Vinako Forwarding Co., Ltd.

| Classification | Line of Business |
|--------------------------|--------------------|
| Air cargo transportation | IATA Agent license |

※1 NVOCC: Business licensed as a non vessel operating common carrier.

Business license, permission, and registration (Overseas)

As of April 1, 2025

Konoike Transport & Engineering (S) Pte. Ltd.

| Classification | Line of Business |
|----------------------------|---|
| Ocean cargo transportation | NVOCC※ ¹ Warehouse / SFA License |
| Warehouse / Food | Halal License, AVA license, SFA License |

Konoike Asia (Thailand) Co., Ltd.

| Classification | Line of Business |
|----------------------------|--|
| Ocean cargo transportation | NVOCC※ ¹ |
| Truck transportation | Ground transportation business |
| Air cargo transportation | IATA Agent license |
| AEO Customs broker license | Import and Export customs clearance business |

Konoike Cool Logistics (Thailand) Co., Ltd.

| Classification | Line of Business |
|----------------|--------------------|
| Warehouse | Warehouse business |

Konoike Express (Thailand) Co., Ltd.

| Classification | Line of Business |
|----------------------|--------------------------------|
| Truck transportation | Ground transportation business |

Konoike Myanmar Co., Ltd.

| Classification | Line of Business |
|----------------------------|---|
| Ocean cargo transportation | Investment approval of Thilawa SEZ management committee |
| Air cargo transportation | NVOCC※ ¹ |
| Truck transportation | Myanmar international freight forwarders' certificate of membership |
| Warehouse / Dry | Warehouse business |

Konoike-EURO Logistics (Bangladesh) Ltd.

| Classification | Line of Business |
|----------------------------|--------------------------------|
| Ocean cargo transportation | NVOCC※ ¹ |
| Truck transportation | Ground transportation business |
| Air cargo transportation | IATA Agent license |

Joshi Konoike Transport & Infrastructure Pvt. Ltd.

| Classification | Line of Business |
|-----------------------------------|-----------------------------------|
| Container Train Operator | Container Train Operator |
| Automobile Freight Train Operator | Automobile Freight Train Operator |

Ferro Scrap Nigam Limited.(under processing to change name FSNL Pvt. Ltd.)

| Classification | Line of Business |
|------------------------|---------------------------|
| Slag Processing work | Slag processing operation |
| Contract worker hiring | Slag processing operation |

※¹ NVOCC: Business licensed as a non vessel operating common carrier.

Lists of Certifications

As of April 1, 2025

Acquired Green Management Certifications

Created by the Ministry of Land, Infrastructure, Transport and Tourism, this is a system that awards certifications to businesses that work above a set level of environmental conservation standards.



Truck

| | |
|-----------------------------|-----------|
| Konoike Transport Co., Ltd. | 36 places |
| Group | 5 places |



Warehouse

| | |
|-------|---------|
| Group | 1 place |
|-------|---------|

Certified Offices made excellent records on Safety standard

The certification is a program administered by the Japan trucking association, Organization for the standardization of truck cargos in Japan which reviews and certifies the safety of each truck transportation company and offers consumers and cargo companies a system in which they are able to choose a safe trucking company. This increases the overall safety awareness of the industry.

High safety certified office certification

| | |
|-----------------------------|-----------|
| Konoike Transport Co., Ltd. | 61 places |
| Group | 39 places |



Lists of Certifications

As of April 1, 2025

Acquired ISO

<ISO 22000 / Food safety >

Beverage distribution

| | |
|-----------------------------|---------|
| Konoike Transport Co., Ltd. | 1 place |
|-----------------------------|---------|

<ISO 14001 / Environment>

Environmental & Engineering

| | |
|-------|----------|
| Group | 4 places |
|-------|----------|

<ISO 13485 / Medical devices>

Healthcare

| | |
|-------|----------|
| Group | 2 places |
|-------|----------|

<ISO 27001/ Security>

Information Security

| | |
|-----------------------------|----------|
| Konoike Transport Co., Ltd. | 2 places |
| Group | 2 places |

<ISO 9001 / Quality management systems>

Quality management systems

| | |
|-------|----------|
| Group | 6 places |
|-------|----------|

<ISO 45001 / Occupational Safety and Health>

Occupational Safety and Health

| | |
|-------|----------|
| Group | 1 places |
|-------|----------|

History of Konoike Transport Co., Ltd.

As of April 1, 2024

| | | | |
|-------------|---|-------------|---|
| 1880 | Group founder Chujiro Konoike opens a worker placement and transport business in what is now Konohana Ward, Osaka as a private merchant. | 2011 | Establishes Konoike Techno Training Center in Osaka. |
| 1900 | Begins onsite cargo handling and transport operations at client steelworks. | 2012 | Expands to Myanmar. |
| 1945 | Establishes Konoike Transport Co., Ltd. | 2013 | Officially listed on the First Section of the Tokyo Stock Exchange. |
| 1951 | Begins in-factory contract operations for the food industry. Registers as port transport service operator following passage of Port Transportation Business Act. | 2014 | Establishes a collaborative investigation lecture with Graduate Schools of Osaka University. Expands to Mexico. Kyushu Sanko Unyu Co., Ltd. becomes subsidiary company Establishes Safety/Quality Training Center in Chiba. |
| 1962 | Starts warehousing operations. | 2015 | Acquires first ISO22000:2005 certification at Kitakanto Distribution Center. |
| 1963 | Enters maritime cargo transport business. | 2017 | On the occasion of its relocation, the Tokyo regional head office has been renamed Tokyo head office. NKS Holding Co., Ltd. (Current Konoike Air Holding Co., Ltd.) becomes subsidiary company. Starts CTO (Container train operator) business in India. |
| 1970 | Starts industrial waste disposal business. | 2018 | NBS Inc. becomes subsidiary company. Establishes Konoike IT Solutions Co., Ltd. |
| 1975 | Kashimasken Co., Ltd.'s (Current Eco Innovation Inc.) No. 1 Resource Recycling Furnace completed. | 2019 | Chuden Sangyo Co., Ltd. becomes subsidiary company. Starts AFTO (Automobile freight train operator) business in India. Establishes a food processing factory at Osaka Kizu Wholesale Market. Formulating the English version of Our Brand. Mr.Takashi Tsuji, (then) Director and Chairman of Konoike Transport Co., Ltd. was awarded The Order of the Rising Sun, Gold Rays with Neck Ribbon. |
| 1979 | Starts air cargo transport business. | 2020 | Air Express, Inc. becomes subsidiary company. 140 years anniversary since start of business. |
| 1980 | 100 years anniversary since start of business. | 2021 | Establishes Konoike Institute of Technology Innovation Center in the "Tokyo Rail Gate WEST". Develops the Sustainability Basic Policy. Establishes the Sustainability Committee. |
| 1984 | Expands to Singapore. | 2022 | Moved to the new "Prime Market" segment of the Tokyo Stock Exchange. Establishes SHINE Co., Ltd. Formulating the "KONOIKE 2030 VISION" |
| 1985 | Expands to U.S.A.. Expands to China. Starts Temperature-Controlled Logistics Services. | 2023 | Starts operations of Konoike Air Holding Co., Ltd. |
| 1991 | Establishes Konoike Air Port Engineering Co., Ltd.(Current Konoike Air Port Service Co., Ltd.) and begins the Airport-Related Services. | 2024 | Expands to Canada. Starts sterilization business in India. |
| 1993 | Becomes the first Japanese distribution company established in Viet Nam. | 2025 | Starts steel business in India. |
| 1994 | Establishes MSS North Kanto (Current Konoike Medical Co., Ltd.) and launches Medical-Related Services. Begins onsite operations at Kansai International Airport (airport-related business). | | |
| 1998 | Acquires first ISO9002:1994 certification at Tonegawa distribution center(Current Kitakanto Distribution Center). | | |
| 2000 | Acquires first ISO14001:1996 certification at Tonegawa distribution center(Current Kitakanto Distribution Center). | | |
| 2001 | Expands to Philippines. Expands to Indonesia. | | |
| 2008 | Expands to India. | | |
| 2009 | Expands to Thailand. Kashimasken Co., Ltd.'s (Current Eco Innovation Inc.) No. 2 Resource Recycling Furnace completed. Becomes the first Japanese distribution company established in Bangladesh. | | |
| 2010 | 130 years anniversary since start of business. Acquires JAL subsidiaries as a Group. Expands the Airport-Related Services(K Ground Service Co., Ltd., K Sky Co., Ltd., K Ground Expert Co., Ltd.). | | |



konoike



Web site



<https://www.konoike.net/en/>

Brand Site



<https://www.konoike.net/brand/en/>



Web Site



Brand Site