

DATA FILE

2024 Vol.2



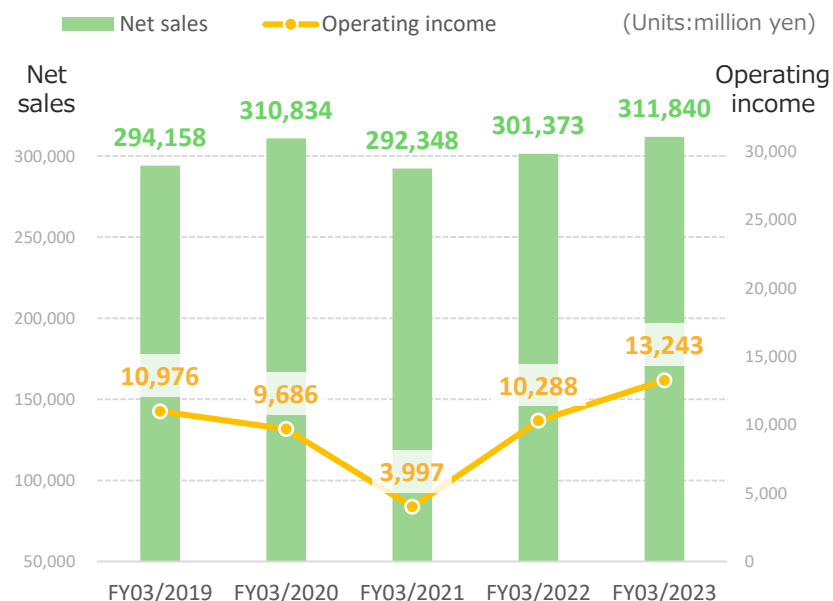
Overview

As of Apr. 1, 2024

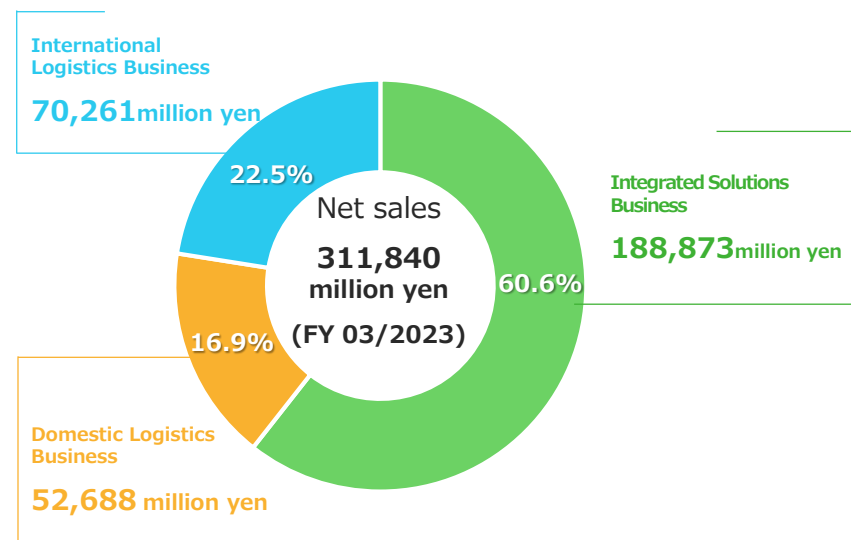
Osaka head office	4-3-9 Fushimimachi, Chuo-ku, Osaka 541-0044 TEL +81-6-6227-4600(operator)
Tokyo head office	6-10-1 Ginza, Chuo-ku, Tokyo 104-0061 TEL +81-3-3575-5751(operator)
Incorporated	May 30, 1945
Representative	Tadahiko Konoike, Representative Director, Chairman, President and Chief Executive Officer

Capital stock	1,723 million yen [As of March 31, 2023]
Net sales	Group : 311,840 million yen [April 1, 2022 ~ March 31, 2023] Konoike Transport alone : 212,422 million yen
Employees	Group: Approx. 24,000 Konoike Transport alone: Approx. 14,000 ※Including Temporary Employees [As of March 31, 2023]
Offices	Domestic : 183, Overseas : 33
Banks	Sumitomo Mitsui Banking Corporation, MUFG Bank, Mizuho Bank

Net sales and Operating income



Net sales by business segment (Group)





Directors / Executive Officers

As of Apr. 1, 2024

Directors

Representative Director, Chairman, President and Chief Executive Officer	Tadahiko Konoike	
Director and Senior Managing Executive Officer	Tadatsugu Konoike	In charge of International Business / In charge of Technology Innovation
External Director	Yoshihito Ota	
External Director	Mika Masuyama	
External Director	Taisuke Fujita	

Audit & Supervisory Board Members

Full-time Audit & Supervisory Board Member	Mitsugu Otani
Full-time Audit & Supervisory Board Member	Hiroaki Kobayashi
External Audit & Supervisory Board Member	Yutaka Fujiwara
External Audit & Supervisory Board Member	Chie Hoshi

Directors / Executive Officers

As of Apr. 1, 2024

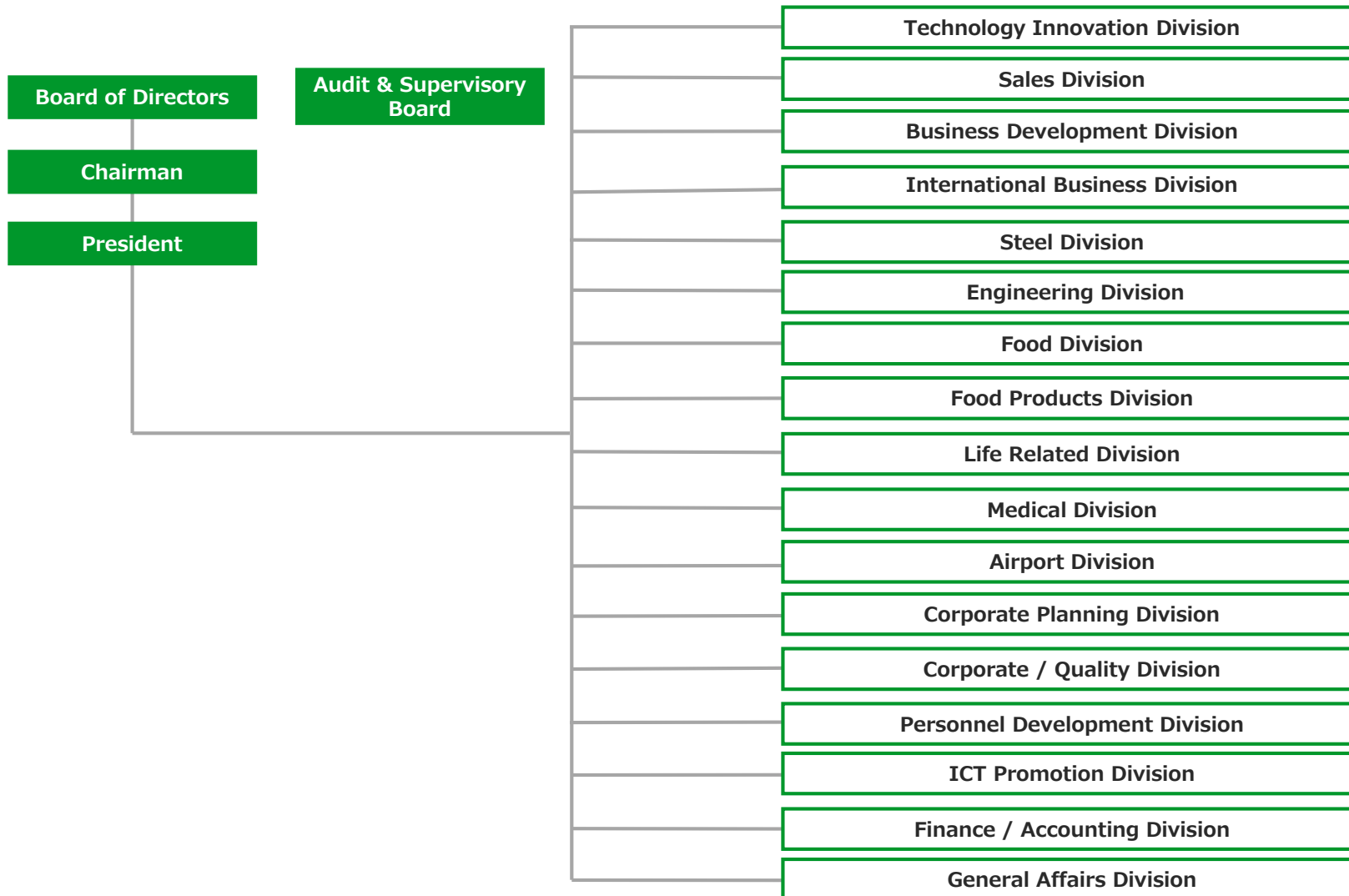
Executive Officers

Senior Managing Executive Officer	Hiroshi Tsuga	In charge of Corporate Department / In charge of Sustainability
Managing Executive Officer	Atsushi Kato	Executive General Manager, Personnel Development Division
Managing Executive Officer	Minoru Amano	Executive General Manager, Business Development Division, in charge of Special Missions of the President (Medical-related)
Managing Executive Officer	Koji Shoda	In charge of Special Missions of the President (Next-Generation Energy), Assistant in charge of Sustainability
Managing Executive Officer	Shingo Yoshida	Executive General Manager, Corporate / Quality Division
Managing Executive Officer	Takashi Suganuma	Executive General Manager, Technology Innovation Promotion Division/ Deputy Executive General Manager, Food Products Division/ Assistant in charge of contracting strategy
Managing Executive Officer	Atsuya Sakamoto	In charge of Osaka World Expo & IR / Special Missions of the President (Next-Generation Energy)
Managing Executive Officer	Kazumitsu Miyoshi	Executive General Manager, Engineering Division
Managing Executive Officer	Shigeki Tanabe	Executive General Manager, Corporate Planning Division
Managing Executive Officer	Kazuo Ofuchi	Executive General Manager, Sales Division
Executive Officer	Shigeo Nakamura	Deputy Executive General Manager, Corporate / Quality Division
Executive Officer	Toshihiro Fujiwara	Executive General Manager, Steel Division / Deputy Executive General Manager, Engineering Division / In charge of contracting strategy
Executive Officer	Hitoshi Nishi	Executive General Manager, General Affairs Division / In charge of Risk Management
Executive Officer	Takahiro Tanaka	In charge of Special Missions of the President (Logistics Strategy)
Executive Officer	Masahiro Kashiwada	Deputy Executive General Manager, Steel Division / General Manager of the Steel Division
Executive Officer	Yoshihito Nakanishi	Executive General Manager, Finance / Accounting Division
Executive Officer	Kiyofumi Okamoto	Executive General Manager, Airport Division / President, Konoike Air Holding Co., Ltd.
Executive Officer	Takahiro Ishikawa	Executive General Manager, ICT Promotion Division / General Manager of the Logistics Systems Department
Executive Officer	Hideki Takami	Executive General Manager, Medical Division / President, Konoike Medical Co., Ltd.
Executive Officer	Satoshi Koizumi	Special Missions of Company President (Technical Human Resource Development) /Assistant in charge of contracting strategy
Executive Officer	Takahide Towa	Executive General Manager, International Business Division
Executive Officer	Mitsuyuki Inoue	Executive General Manager, Food Division
Executive Officer	Koji Kuramoto	Executive General Manager, Food Products Division



Organization chart

As of Apr. 1, 2024





Domestic branches

As of Apr. 1, 2024

Branch name	Address	TEL
International Logistics (Osaka) Branch	2-1-23 Chikko, Minato-ku, Osaka 552-0021	06-6572-3017
International Logistics (Tokyo) Branch	1-9-13 Nihonbashihoncho, Chuo-ku, Tokyo 103-0023	03-6738-2850
Wakayama Branch	3-8-41 Matsuenaka, Wakayama, Wakayama 640-8423	073-455-4101
Kashima Branch	1520-4 Izumigawa, Kashima, Ibaraki 314-0015	0299-82-7511
Engineering Branch	1-3-25 Higashiminato, Kokurakita-ku, Kitakyushu 803-0802	093-562-6820
Tokai Branch	25-1 Namiyose-cho, Atsuta-ku, Nagoya 456-0003	052-825-7600
Kanto Kita-Nihon Branch	6-10-1 Ginza, Chuo-ku, Tokyo 104-0061	03-3575-5806
Nishi-Nihon Branch	1-15-15 Nakatsu, Kita-ku, Osaka 531-0071	06-6292-5861
Higashi-Nihon Branch	6-10-1 Ginza, Chuo-ku, Tokyo 104-0061	03-3575-5812
Kansai Branch	3-7-9 Shimaya, Konohana-ku, Osaka 554-0024	06-6466-3701
Kanto Branch	5-10-14 Suehiro, Chuo-ku, Chiba 260-0843	043-261-4421

Domestic group companies

As of Apr. 1, 2024

Company name	Address	TEL
Konoike Medical Co., Ltd.	1-6-4 Yurakucho, Chiyoda-ku, Tokyo 100-0006	03-3580-3860
Kyushu Sanko Unyu Co., Ltd.	2-20-3 Ryutsudanchi, Minami-ku, Kumamoto 862-8635	096-377-2135
Japan Airways Co., Ltd.	1-5-21, Katsushima, Shinagawa-ku, Tokyo 140-0012	03-5753-6200
Kanriku Co., Ltd.	Takamatsu Higashi Factory Park, 121-20 Showa, Sanuki, Kagawa 769-2304	0879-24-9100
Konoike Air Holding Co., Ltd.	6-10-1 Ginza, Chuo-ku, Tokyo 104-0061	03-6264-5222
Konoike Air Port Service Co., Ltd.	4-22-3 Kamata, Ota-ku, Tokyo 144-0052	03-6424-5182
Konoike Sky Support Co., Ltd.	5-6 Rinkuoraikita, Izumisano, Osaka 598-0048	072-463-4600
K Sky Co., Ltd.	1 Senshukukonaka, Tajiri, Sennan, Osaka 549-0011	072-455-3373
K Ground Service Co., Ltd.	2-21 Rinkuoraikita, Izumisano, Osaka 598-0048	072-463-8571
K Ground Expert Co., Ltd.	2-21 Rinkuoraikita, Izumisano, Osaka 598-0048	072-463-0155
Japan Airport Service Co., Ltd.	154-4 Furugome Komae, Narita, Chiba 282-0004	0476-32-5881
Airport Terminal Service Co., Ltd.	M3047, Terminal2 Narita International Airport Narita, Chiba 282-0004	0476-34-6020
NAB Corporation.	1001-1282 Honsanritsuka, Narita, Chiba 286-0118	0476-33-4911
J Friendly Inc.	1001-1282 Honsanritsuka, Narita, Chiba 286-0118	0476-40-4322
Air Express, Inc.	150 Kagamizu, Naha-shi, Okinawa 901-0142	098-852-0001
Eco Innovation Inc.	3 Hikari, Kashima, Ibaraki 314-0014	0299-84-3911
ASR Recycling Kashima Co., Ltd.	3 Hikari, Kashima, Ibaraki 314-0014	0299-84-2063
Konoike Express Co., Ltd.	2-1 Sakaedani, Wakayama, Wakayama 640-8441	073-451-4151
Otori Tech Co., Ltd.	3 Hikari, Kashima, Ibaraki 314-0014	0299-82-4558
Konoike Shipping Co., Ltd.	2-3-1 Shinkawa, Chuo-ku, Tokyo 104-0033	03-6738-2960
Sano Unyu Co., Ltd.	3-1-16 Kaigandori, Chuo-ku, Kobe 650-0024	078-391-0092
Konohana Transport Co., Ltd.	1-24 Kaminomiyacho, Nakamura-ku, Nagoya 453-0043	052-481-3221
Chuden Sangyo Co., Ltd.	684-1 Taguchi, Myoko, Niigata 949-2106	0255-86-3127
Nichiun Co., Ltd.	4-23 Kaigandori, Naka-ku, Yokohama 231-0002	045-201-8951
NBS Inc.	5-10 Narayamachi, Hakata-ku, Fukuoka 812-0023	092-263-8833
Konoike Corporate Service Co., Ltd.	3-10-29 Shimaya, Konohana-ku, Osaka 554-0024	06-6463-8110
Chiyoda Inspection Industries Co., Ltd.	1-1-24 Shimaya, Konohana-ku, Osaka 554-0024	06-6465-1275
SHINE Co., Ltd.	3-8-8 Toranomom, Minato-ku, Tokyo 105-0001	03-5401-0330
Konoike IT Solutions Co., Ltd.	2-3-1 Shinkawa, Chuo-ku, Tokyo 104-0033	03-3551-0502

Overseas group companies

As of Apr. 1, 2024

U.S.A.

Company name	Address	Business Details / Staff	TEL
Konoike-Pacific California, Inc.	1420 Coil Avenue Wilmington, CA U.S.A.	<ul style="list-style-type: none"> ①Frozen and Chilled warehouse ②Transloading import and export cargos ③United States Department of Agriculture (USDA) Inspection ④Container drayage, truck distribution and brokerage. ⑤Transloading export cargos (Direct access to 2 major railway companies. (UP/BNSF)) 	1-310-518-1000
Konoike Transport & Engineering (USA), Inc.	801 East E Street, Wilmington, CA U.S.A.	<ul style="list-style-type: none"> ①NVOCC business ②Intermodal logistics and installation of heavy mechanical equipments, etc. 	1-310-513-1500
Konoike-General, Inc.	9415 Burtis Street, South Gate, CA U.S.A.	<ul style="list-style-type: none"> ①Frozen and Chilled warehouse ②Transloading import and export cargos 	1-562-806-2445
Konoike-E Street, Inc.	901 East E Street, Wilmington, CA U.S.A.	<ul style="list-style-type: none"> ①Frozen and Chilled warehouse ②United States Department of Agriculture (USDA) Inspection 	1-310-233-7300

Mexico

Company name	Address	Business Details / Staff	TEL
Konoike Mexico S.A. de C.V.	Prolongacion Gonzalez Gallo, #1897, Int4. Col. San Sebastianito, Tlaquepaque, Jalisco, Mexico	<ul style="list-style-type: none"> ①NVOCC business ②Intermodal logistics and installation of heavy mechanical equipments, etc. ③Packaging service 	52-33-3797-6222

Overseas group companies

As of Apr. 1, 2024

China

Company name	Address	Business Details / Staff	TEL
Konoike Transport & Engineering (H.K.) Ltd.	Unit 7-12, 7/F, Mita Centre, 552-566 Castle Peak Road, Kwai Chung, New Territories, Hong Kong	①Operation business of import and export marine cargos (NVOCC business of dispatch and delivery from Hong Kong and Huanan Area) ②Operation business of import and export air cargos ③Cross border truck business between Hong Kong and Guang dong Province ④Warehouse storage, distribution business in Hong Kong and Guang dong Province ⑤Transportation and installation of mechanical equipments, etc ⑥Operation of transportation between 3 countries and B/L issuance business [staff] 22	852-2735-7313
Konoike Logistics (Shenzhen) Co., Ltd.	Rm640, Tower B, Fantasia Funian Plaza.,No.3, Shihua Rd, Futian Free Trade Zone, Shenzhen, Guangdong, China	①Forwarding of import and export cargos ②NVOCC business ③Cargo transportation business ④Ground transportation business ⑤Custom clearance business ⑥Trading business ⑦Distribution processing and consulting business ⑧Transportation and installation,maintenance of mechanical equipments, etc. [staff] 12	86-755-8359-9017
• Guangzhou Branch	Room C01. 25/F. West Tower. Yangcheng International Trading Centre, No.122, East Tiyu Road, Tianhe District, Guangzhou, China		86-20-3825-5709
Qingdao Cosco Konoike Logistics Co., Ltd.	No.18, Gao Chang Road, Phoenix Valley, High-Tech Industrial Park, Qingdao, China	①Warehouse business at part of bonded area ②Container vanning and devanning work ③Marine products processing business ④NVOCC business ⑤Forwarding of import and export cargos ⑥Ground transportation business [staff]48	86-532-8870-1607
• City Office	Room3503, 35F Qingdao International Finance Center,59 Hong Kong Middle Road, Qingdao, China		86-532-8597-3976

Overseas group companies

As of Apr. 1, 2024

China

Company name	Address	Business Details / Staff	TEL
Konoike Logistics (Shanghai) Co., Ltd.	Room 1810, Ruihong Corporate Avenue T1, No.118 Feihong Road, Hongkou District, Shanghai, China	① Warehouse business ② NVOCC business ③ Cargo transportation business ④ Ground transportation business ⑤ Custom clearance business ⑥ Trading business ⑦ Distribution processing and consulting business ⑧ Installation of mechanical, Maintenance in factory [staff] 39	86-21-6309-1118
• Waigaoqiao Warehouse	No.50 Warehouse No.389 Ying Lun Road Waigaoqiao Free Trade Zone, Shanghai, China		86-21-5048-2833
• Puxi Office	Room 1810, Ruihong Corporate Avenue T1, No.118 Feihong Road, Hongkou District, Shanghai, China		86-21-6309-1118
• Hangzhou Branch	Room 904, Mei Thai International Building, No.836 jin Sha Avenue Economic Technology Development Area Hangzhou, China		86-571-8510-8637
• Tianjin Branch	Room 1818, International Building No.75 Nanjing Road, Heping District Tianjin, China 300050		86-22-8707-6199
Konoike Asia (Jiangsu) Co., Ltd.	No.9 Haitian Road, Changshu Advanced Material Industrial Park, Jiangsu, China	① Warehouse Business ② NVOCC Business ③ Truck distribution ④ Distribution processing and Consulting Business ⑤ Installation of mechanical, Maintenance in factory ⑥ ISO9001 ⑦ Electric power supply service, Electricity generation business, Power transmission service, Power service, Research and development of new energy technologies [staff] 60	86-512-5219-5058
• Suzhou Branch	Room No.10010, Green Treasure Business Tower No.2-2, Green Treasure Square, No.436 Chang Jiang Road, Suzhou, China		86-512-6807-2938
• Wuxi Branch	Room 1502, Zhongke Intelligent Information Industry Park, No.52, Jingxian Road, Xinwu District, Wuxi city, Jiangsu, 214028, China		86-510-8520-3021

Overseas group companies

As of Apr. 1, 2024

China

Company name	Address	Business Details / Staff	TEL
BEL International Logistics Ltd.	RM8A, 8/F, Mita Centre, 552-566 Castle Peak Road, Kwai Chung, New Territories, Hong Kong	①Forwarding of import and export cargos ②NVOCC business ③Warehouse business ④Transportation business [staff] 48	852-2796-0118
BEL International Logistics Ltd. (Shanghai)	Room 1102-1103, 11/F, Global New Times Plaza #1666 Sichuan Road (North) Shanghai 200080, China	①Forwarding of import and export cargos ②NVOCC business ③Warehouse business ④Transportation business [staff] 15	86-21-6122-5488
• Ningbo Branch	Room 9B22, 9/F, Hualian Building, No.55 Dongdu Road, Haishu District, Ningbo 315010, China		86-574-8775-2736
• Qingdao Branch	Room 1906 Mansion A Shuangfu Building No.887 Tongan Road, Laoshan District Qingdao 266000, China		86-532-6606-0618
• Tianjin Branch	Room 500-1, E-Valley Building, No.37 Sanma Road, Nankai District, Tianjin 300199, China		86-22-2315-7327/ 2715-6990
• Shenzhen Branch	Room 06,07,08, 21/F, Blk B Regalia Place Building, No.4018 Jiabin Road, Luohu District, Shenzhen 518000, China		86-755-8221-9366
• Xiamen Branch	Room 1111, H41Yindu Plaza, No.9 Haitian Road, Huli District, Xiamen 361006, China		86-592-5616-677
• Guangzhou Branch	Room 1502, 15/F., Dongshan Plaza, 69 Xian Lie Road Central, Yuexiu District, Guangzhou 510095, China		86-20-8732-2511
BEL Supply Chain Solutions Ltd.	Unit 7-12, 7/F, Mita Centre, 552-566 Castle Peak Road, Kwai Chung, N.T. Hong Kong	①Warehouse business ②Transportation business [staff] 15	852-3468-6678

Overseas group companies

As of Apr. 1, 2024

Philippines

Company name	Address	Business Details / Staff	TEL
Konoike Philippines Corporation	301 Centrale Bldg. South Point Subdivision Banay-Banay Cabuyao Laguna, Philippines	①Logistics Service [staff] 209	63-049-530-6698
MacroAsia Airport Services Corporation	3rd Floor, Building A, Skyfreight Center, Ninoy Aquino Avenue, Brgy. Sto. Niño, Parañaque City, 1704, Philippines	①Passenger handling services ②Ramp services ③Cargo handling services [staff]4,340	63-2-8878-5000
PKI Manufacturing & Technology, Inc.	Lot 14, Phase 1-A, SSB First Philippines Industrial Park Sto. Tomas, Batangas, Philippines	①Contract operations [staff] 42	63-43-405-6388/6389

Indonesia

Company name	Address	Business Details / Staff	TEL
PT. Konoike Transport Indonesia	Midplaza1 Building, 19th Floor, Jl.Jend. Sudirman Kav. 10-11, Jakarta, Indonesia	①Forwarding of import and export of ocean and air cargos ②Custom clearance business ③NVOCC business ④Transportation and installation of mechanical equipments, etc. ⑤Engineering ⑥Warehouse business [staff] 21	62-21-573-5665
• Karawang Office	Jaran Harapan II Kiic, Sirnabaya, KEC. Telukjambe Tim., Kabupaten Karawang, Jawa Barat 41361, Indonesia	①Contract operations [Staff]175	

Overseas group companies

As of Apr. 1, 2024

Viet Nam

Company name	Address	Business Details / Staff	TEL
Konoike Vinatrans Logistics Co., Ltd.	18-A Luu Trong Lu, District 7, Ho Chi Minh City, Vietnam	①Forwarding Business (Import & Export cargo, NVOCC, etc) ②Transpotation Business (Domestic transport, Truck & Trailer & Drayge & cool logistics, etc) ③Warehouse Business (Bonded & Dry & Frozen & Cold storage) ④Contract work & DC center Business (in facility, depot work) ⑤Machinery work Business (Installation and loading in factory) [staff] 611	84-28-3872-2845
• Hanoi Branch	18FL, Icon 4 Building, 243A De La Thanh Street, Lang Thuong, Dong Da, Hanoi, Vietnam	①Forwarding Business (Import & Export cargo, NVOCC, etc) ②Transpotation Business (Domestic transport, Truck & Trailer & Drayge & cool logistics, etc) ③Warehouse Business (Bonded & Dry & Frozen & Cold storage) ④Contract work & DC center Business (in facility, depot work) ⑤Machinery work Business (Installation and loading in factory) [staff] 79	84-24-2220-9498
• Hai Duong Branch / Warehouse	C4 Phuc Dien Industrial Zone, Cam Giang, Hai Duong Province, Vietnam	①Forwarding Business (Import & Export cargo) ②Transpotation Business (Domestic transport, Truck & Trailer & Drayge & cool logistics, etc) ③Warehouse Business (Bonded & Dry cargo storage) ④Machinery work Business (Installation and loading in factory) [staff] 55	84-220-354-6575
• Hai Phong Branch / Warehouse	1Room 7-8, Fl 7, Thanh Dat Building, 3 Le Thanh Tong Str., May To Ward, Ngo Quyen Dist, Hai Phong City, Vietnam.	①Forwarding Business (Import & Export cargo) ②Transpotation Business (Domestic transport, Truck & Trailer & Drayge) ③Warehouse Business (Dry cargo storage) ④Machinery work Business (Installation and loading in factory) [staff] 23	84-225-3686-126
• Da Nang Branch / Warehouse	Road 11b,Hoa khanh IZ,Hoa Khanh ward, Lien Chieu dist-Da Nang City, Vietnam	①Forwarding Business (Import & Export cargo, NVOCC, etc) ②Transpotation Business (Domestic transport, Truck & Trailer & Drayge & cool logistics, etc) ③Warehouse Business (Dry cargo storage) ④Machinery work Business (Installation and loading in factory) [staff] 18	84-236-3551-759
• Baria Buntau Branch / Warehouse	HighWay 51, My Tan Hamlet, My Xuan Commune, Tan Thanh District, Ba Ria - Vung Tau Province, Vietnam	①Forwarding Business (Import & Export cargo) ②Transpotation Business (Domestic transport,Heavy material transport) ③Warehouse Business (Dry cargo storage) ④Machinery work Business (Installation and loading in factory) [staff] 68	84-254-3893-629

Overseas group companies

As of Apr. 1, 2024

Viet Nam

Company name	Address	Business Details / Staff	TEL
Alpha-AG Joint Stock Company	Lot E02, 2nd Street, Long Hau Industrial Park, Can Giuoc District, Long An Province, Vietnam	①Frozen and Chilled warehouse ②Engineering [staff] 110	84-28-3873-4395
· Hai Duong business location	KM36+880, Pho Mao, Xa Cam Dien, Huyen Cam Giang, Hai Duong Province, Vietnam	①Engineering [staff] 5	
Vinako Forwarding Co., Ltd.	Unit 02-03-05 Vietnam Airlines Building-The Southern Office 49 Truong Son Str.,Tan Binh District, Ho Chi Minh City, Vietnam		84-28-3844-6252
· Hanoi Branch	Room No.304 Dmc Tower, 535 Kim Ma Street, Ba Dinh District, Hanoi, Vietnam	①Operation business of air cargo ②Custom clearance business ③Domestic transportation business ④Packing business [staff] 64 (Total)	84-24-2220-9545
BEL International Logistics Vietnam Company Ltd.	18F Park IX Building, 8 Phan Dinh Giot Street, Ward 2,Tan Binh District, Vietnam	①Forwarding of import and export cargos ②NVOCC business ③Warehouse business ④Transportation business [staff] 13	84-28-3820-1128
· Hanoi Representative Office	Floor 7 , Sannam Building, 78 Duy Tan Street, Cau Giay District, Hanoi City, Vietnam		84-24-3710-0946

Singapore

Company name	Address	Business Details / Staff	TEL
Konoike Transport & Engineering (S) Pte Ltd.	10 Anson Road, #20-02 International Plaza, Singapore	①Forwarding of import and export of ocean and air cargos ②Custom clearance business ③NVOCC business ④Transportation and installation of mechanical equipments, etc. ⑤Contract service (Stuffing, Material supply, Inspection in factory) ⑥Warehouse business [staff] 8	65-6220-0010

Overseas group companies

As of Apr. 1, 2024

Thailand

Company name	Address	Business Details / Staff	TEL
Konoike Asia (Thailand) Co., Ltd.	3656/74-75 Green Tower, 22nd Fl, Rama 4 Rd., Klongton, Klongtoey, Bangkok, Thailand	①Forwarding of import and export cargo ②Truck distribution [staff] 59	66-2-026-3584
Konoike Cool Logistics (Thailand) Co., Ltd.	335/29 Moo 9 Bangna-Trad Rd.(Km.19), Bangchalong, Banglee, Samutprakarn, Thailand	①Frozen and Chilled warehouse [staff] 59	66-2-337-3013
· Well Grow office	Wellgrow Industrial Estate, 112 Moo 5, Bangna-Trad Road, Km.36, Bang Samak, Bang Pakong 24180 Chachoengsao, Thailand	①Contract Operations [Staff] 500(Konoike Cool Logistics (Thailand) Co., Ltd. 5、 Konoike-Sotus Venture Co., Ltd. 495)	
Konoike Express (Thailand) Co., Ltd.	335/29 Moo 9 Bangna-Trad Rd.(Km.19), Bangchalong, Banglee, Samutprakarn, Thailand	①Frozen & Chilled & Dry cargo Transportation business [staff] 67	66-2-337-3023
Konoike-Sotus Venture Co., Ltd.	10/68 (309), 3rd Floor, The Trendy Building, Soi Sukhumvit 13, Klontoei Nua, Sub-district, Wattana District, Bangkok, Thailand	①Business/subsidiary establishment and planning, investment and business support ②Consulting ③Accounting and personnel management [staff] 672	66-2-168-7260

Myanmar

Company name	Address	Business Details / Staff	TEL
Konoike Myanmar Co., Ltd.	Lot No.C-20, Thilawa SEZ Zone A,Yangon, Myanmar	①International Forwarding ②Custom Clearance Related Service ③NVOCC business ④Engineering-related Services such as Installation and/or Assemble of Facilities ⑤Warehousing(for General cargo & Bonded cargo) ⑥Packing Processing Service in own Warehouse ⑦Trucking ⑧Supporting Services for Industrial Processing in Customer's Warehouse ⑨Any other business incidental to the foregoing, which may be approved by the Management committee [staff] 49	95-1-230-9144/9145/9146
· Yangon Office	4th floor, Yuzana Hotel, Shwe Gon Taing RD., Bahan Township, Yangon, Myanmar		95-1-860-3396

Overseas group companies

As of Apr. 1, 2024

Bangladesh

Company name	Address	Business Details / Staff	TEL
Konoike-EURO Logistics (Bangladesh) Ltd.	House No.162, Eastern Road, Lane #3, New Dohs, Mohakhali, Dhaka, Bangladesh	①Forwarding of import and export cargo [staff] 7	880-2-885-0721

India

Company name	Address	Business Details / Staff	TEL
Joshi Konoike Transport & Infrastructure Pvt. Ltd.	M-69, 3rd Floor, Greater Kailash - II, New Delhi - 110048, India	①Container Train Operator ②Automobile Freight Train Operator	91-11-49577-003/40
Konoike Asia (India) Pvt. Ltd.	Unit No. 114, 1st Floor, Sector 54, Suncity Business Tower, Golf Course Road, Gurgaon, India	①Forwarding of import and export cargo ②Truck distribution [staff] 19	91-124-4380273 /4380274
Carna Medical Database Pvt. Ltd.	Unit 518, 5th floor, MGF Metropolis Mall, M.G.Road, Gurgaon, Haryana, India	①Establishment and distribution of a medical supply database ②Establishment of a logistics network utilizing the medical supply database ③Consultant services utilizing the medical supply database [staff] 9	91-124-430-9635
India Office	Unit 521, 5th floor, MGF Metropolis Mall, M.G.Road, Gurgaon, Haryana, India		91-124-430-9636

Germany

Düsseldorf Office	Fritz-Vomfelde-str.34 40547 Düsseldorf, Germany		49-211-53883-266/267
--------------------------	---	--	----------------------

Warehouses / Centers (Domestic)

As of Apr. 1, 2024

Name	Address	Tel	Structure	Dimensions (m ²)						
				Dry	Chilled	Frozen	Automated	Temp-Cntl	Total	
New Chitose Warehouse	863-2 Kitashinano, Chitose, Hokkaido 066-0075	0123-23-5125	Steel frame 2 story	16,500						16,500
Chitose No. 2 Distribution Center	1034-10 Kamiosatsu, Chitose, Hokkaido 066-0077	0123-27-5121	Steel frame 1 story	1,600	700				2,200	4,500
Sapporo Temperature Controlled Distribution Center	1-706-1 Shinkonishi, Ishikari, Hokkaido 061-3241	0133-73-8661	Steel frame 1 story		700	300				1,000
			Steel frame 2 story	1,200				900	2,100	
			Steel frame 2 story		900	1,200			2,100	
			Steel frame 2 story		2,900	500		1,300	4,700	
Sendai Temperature Controlled Distribution Center	9-5-2 ₇ Narita, Tomiya, Miyagi, 981-3341	022-351-0911	Steel frame 3 story		4,100	6,400			1,200	11,700
Miyagi Distribution Center	3-4-7 Yoshioka Higashi, Taiwa-cho, Kurokawa, Miyagi 981-3627	022-345-1191	Steel frame 1 story	600						600
			Steel frame 5 story	8,000	200					8,200
Mito Distribution Center	1249 ₇ -Kasamatsu, Mukoyama, Naka, Ibaraki 311-0102		Steel frame 1 story	800						800
Funabashi Nishiura Distribution Center	3-4-1 Nishiura, Funabashi, Chiba 273-0017	047-495-4080	RC 5 story	15,800						15,800
Ami Distribution Center	3555-1 Yoshiwara, Ami-machi, Inashiki, Ibaraki 300-0311		RC 5 story	18,000						18,000
Maihama Distribution Center	10-9 Chidori, Urayasu, Chiba 279-0032	047-316-3230	Steel frame 5 story	3,500					6,600	10,000
Chiba Minami Toke Warehouse	1-6-10 Onodai, Midori-ku, Chiba 267-0056	043-295-6091	Steel frame 2 story	4,300						4,300
Chiba Minami Ichihara Warehouse	2-4-39 Tamasakinishi, Ichihara, Chiba 290-0044	0436-20-6373	Steel frame 2 story	8,000						8,000
Tonegawa Distribution Center	358-3 Nobecho, Tatebayashi, Gunma 374-0047	0276-72-4321	Steel frame 1 story	3,000	700					3,700
			Steel frame 2 story	2,000						2,000
Shibukawa Distribution Center	280 Handanakahara, Shibukawa, Gunma 377-0004	0279-23-8940	Steel frame 1 story	1,300						1,300
Kitakanto Distribution Center	3027-5 Maigi-yokonehara, Chiyodamachi, Ora, Gunma 370-0504	0276-70-5141	Steel frame 2 story	42,400						42,400
Tsuchiura Distribution Center	1677-7, Shimoinayoshi, Kasumigaura Shi, Ibaraki 315-0052	0299-57-3770	Steel frame 1 story	8,200						8,200

*Temperature controlled warehouse: Warehouse that is able to maintain a certain temperature (10~20℃)

Warehouses / Centers (Domestic)

As of Apr. 1, 2024

Name	Address	Tel	Structure	Dimensions (m ²)					
				Dry	Chilled	Frozen	Automated	Temp-Cntl	Total
Kanto Temperature Controlled Distribution Center	300-3 Fukawa, Sugitomachi, Kitakatsushika, Saitama 345-0012	0480-36-5525	Steel frame 3 story		7,200	7,100	9,800PL (Frozen)		14,300
Urawa Temperature Controlled Distribution Center	6-11-5 Shirahata, Minami-ku, Saitama 336-0022	048-864-8911	RC 4 story	200	3,200				3,400
Koshigaya Temperature Controlled Distribution Center	2-3-4 Ryutsudanchi, Koshigaya, Saitama 343-0824	048-985-4321	Steel frame 2 story RCS 4 story	1,400	1,300 4,000	100 9,400			2,800 13,400
Ome Distribution Center(No.1)	2-9-13 Suehirocyou, Ome, Tokyo 198-0025	0428-78-2084	Steel frame 3 story	62,800				900	63,700
Ome Distribution Center(No.2)	3-8-4 Imai, Ome, Tokyo 198-0023	0428-32-4551	Steel frame 5 story	9,100	200				9,300
Kunitachi Distribution Center	2-6-2 Izumi, Kunitachi, Tokyo 186-0012	042-580-1071	RC 6 story	21,700					21,700
Oi Distribution Center	4-7-7 Tokai, Ota-ku, Tokyo 143-0001	03-3790-0091	RC 5 story	9,100				800	9,900
Tokyo Railgate Office (Konoike Railgate)	6th floor, Tokyo Railgate WEST, 3-3-22 Yashio, Shinagawa-ku, Tokyo 140-0003	03-5755-9338	Steel frame 6 story	8,000					8,000
Daikoku Distribution Center	22 Daikoku futo, Tsurumi-ku, Yokohama 230-0054	045-510-2222	RC 5 story (part of the 3rd floor)	4,300					4,300
Ebina Distribution Center	5-18-1 Nakashinden, Ebina, Kanagawa 243-0422	046-205-6367	RC 4 story	33,900					33,900
Kurami Warehouse	694-3 Kurami, Samukawamachi, Koza, Kanagawa 253-0101	0467-75-3672	Steel frame 2 story		1,100				1,100
Sagami Food Distribution Center	1435-1 Kaneda, Atsugi, Kanagawa 243-0807	046-297-7107	RC 2 story		4,300	3,800			8,100
Atsugi Distribution Center	2500-1 Toda, Atsugi, Kanagawa 243-0023	046-229-6463	RC 5 story	11,500	1,600	500			13,600
			RC 5 story	16,400					16,400
			RC 5 story	13,000					13,000
Atsugi Temperature Controlled Distribution Center	4070-1 Nakatsu-sakuradai, Aikawamachi, Aiko, Kanagawa 243-0303	046-285-2180	RC 8 story		1,600	8,800	3,400PL (Frozen)		10,400

*Temperature controlled warehouse: Warehouse that is able to maintain a certain temperature (10~20°C)

Warehouses / Centers (Domestic)

As of Apr. 1, 2024

Name	Address	Tel	Structure	Dimensions (m ²)						
				Dry	Chilled	Frozen	Automated	Temp-Cntl	Total	
Kanagawa Chuo Distribution Center	4009-3 Nakatsu-sakuradai, Aikawamachi, Aiko, Kanagawa 243-0303	046-280-4333	RC 6 story	13,700						13,700
Kanagawa Ayase Distribution Center	8-27-1 Fukayakami, Ayase, Kanagawa 252-1108	0467-71-5605	Steel frame 3 story	11,300			61,000PL (Dry)			11,300
Nigata Distribution Center	5-1923-13 Higashiko, Seiromachi, Kitakanbara, Niigata 957-0101	025-256-1601	Steel frame 1 story	2,300	900					3,200
Azumino Distribution Center	1110 Hotakamaki, Azumino, Nagano 339-8305	0263-87-7140	Steel frame 1 story	19,000				100 (30°C)		19,100
Shizuoka Temperature Controlled Distribution Center	640-2 Yawata, Fujieda, Shizuoka 426-0009	054-643-4321	Steel frame 1 story		1,500	1,000				2,500
Fukuroi Distribution Center	153-1 Icchoda Oyama, Fukuroi, Shizuoka 437-0056	0538-41-3617	Steel frame 2 story	24,300			10,000PL (Dry)			24,300
Nagaizumi Distribution Center	359 Kaminagakubo, Nagaizumicyo, Suntogun, Shizuoka 411-0935	055-989-2104	Steel frame 2 story	6,200	9,000	300			10,700	26,200
Nagoya Temperature Controlled Distribution Center	2-201-2 Fujimae, Minato-ku, Nagoya 455-0855	052-303-5813	Steel frame 3 story		4,300	4,200				8,500
Obu Distribution Center	1-1 Toyama, Kitasaki-Machi, Obu, Aichi 474-0001	0562-38-6641	Steel frame 4 story (1st and 2nd floor)	26,200	300					26,500
Aisai Distribution Center	6-1 Yosenouchi, Nishihocyou, Aisai, Aichi 490-0911	0567-24-7001	Steel frame 3 story	14,900	100		1,500PL (Dry)			15,000
Shiga Distribution Center	1601-1 Oshinohara, Yasu, Shiga 520-2313	077-587-3300	Steel frame 3 story	10,300						10,300
Kyoto Joyo Distribution Center	1-2 Tono-ikenouchi, Joyo, Kyoto 610-0111	0774-52-5151	Steel frame 2 story	30,400	300					30,700
Ajigawa Warehouse	1-5-34 Ishida, Minato-ku, Osaka 552-0006	06-6573-2721	RC 2 story RC 3 story	3,800 3,200					5,500	8,700
Harbour Transportation Department L-1 Storage sheds	8-2-31 Nankonaka, Suminoe-ku, Osaka 559-0033	06-6612-3421	Steel frame 1 story	2,800						2,800
Nanko R Distribution Center	2-3-59 Nankokita, Suminoe-ku, Osaka 559-0034	06-6614-1288	Steel frame 3 story	11,600					1,800	13,400

*Temperature controlled warehouse: Warehouse that is able to maintain a certain temperature (10~20°C)

Warehouses / Centers (Domestic)

As of Apr. 1, 2024

Name	Address	Tel	Structure	Dimensions (m ²)						
				Dry	Chilled	Frozen	Automated	Temp-Cntl	Total	
Osaka General Distribution Center	7-4-110 Nankonaka, Suminoe-ku, Osaka 559-0033	06-6613-1851	RC 3 story	10,800						10,800
Suminoe Distribution Center	2-8-76 GLP Osaka II Shibatani, Suminoe-ku, Osaka 559-0021	06-6115-3380	RC 4 story (part of 1st,3rd, 4th floor)	43,600						43,600
Osaka Temperature Controlled Distribution Center	2-2-6 Mishimae, Takatsuki, Osaka 569-0835	072-677-7755	RC 5 story		2,000	4,300				6,300
Osaka Hokko Temperature Controlled Distribution Center	1-6-10 Hokkoshiratsu, Konohana-ku, Osaka 554-0041	06-6467-1800	Steel frame 4 story		12,700	6,000	15,000PL (Frozen · Dry)			18,700
Maishima Steel Distribution Center	1-12-38 Hokkoshiratsu, Konohana-ku, Osaka 554-0041	06-6225-7911	Steel frame 1 story	3,900						3,900
Osaka Hokko Distribution Center	Prologis park-maishima III, 2-1-37 Hokkoryokuchi, Konohana-ku, Osaka 554-0042	06-4804-5666	Steel frame 7 story (1st, 2nd and 3rd floor)	33,300	500			1,600		35,400
Konohana Distribution Center	2-4-35 Hokko, Konohana-ku, Osaka 554-0033	06-6461-1150	Steel frame 6 story	12,800						12,800
Higashi Osaka Distribution Center	1-43 Honjohigashi, Higashi Osaka, Osaka 578-0952	06-6744-0271	Steel frame 4 story	12,700				4,500		17,200
Nishi Osaka Distribution Center	2-13-33 Nakajima, Nishiyodogawa-ku, Osaka 555-0041	06-6476-3420	Steel frame 4 story	64,000						64,000
Kobe Higashi Warehouse	4-15-1 Koyochohigashi, Higashinada-ku, Kobe 658-0031	078-846-0851	Steel frame 1 story	1,500						1,500
Okayama Hayashima Distribution Center	3489-1 Mishima, Minami-ku, Okayama 701-0206	086-238-1331	Steel frame 2 story	10,700	200					10,900
Maniwa Distribution Center	202-11 Nakabara, Maniwa, Okayama 719-3225	0867-45-0367	Steel frame 2 story	10,200						10,200
Hiroshima Distribution Center	2-3-5 Tomominami, Asaminami-ku, Hiroshima 731-3168	082-849-5228	Steel frame 1 story	2,200	800	500				3,500
Yamaguchi Distribution Center	1003-40 Shimoosaba, Yamaguchi, Yamaguchi 753-0212	083-927-1414	Steel frame 2 story	6,800	400					7,200
Fukuoka Temperature Controlled Distribution Center	5-5-20 Hakozaki futo, Higashi-ku, Fukuoka 812-0051	092-631-4323	Steel frame 2 story	800	500	800				2,100

*Temperature controlled warehouse: Warehouse that is able to maintain a certain temperature (10~20°C)



Warehouses / Centers (Domestic)

As of Apr. 1, 2024

Name	Address	Tel	Structure	Dimensions (m ²)						
				Dry	Chilled	Frozen	Automated	Temp-Cntl	Total	
Saga Distribution Center	5005 Sonobe-Kiyamacho, Miyaki, Saga 841-0203	0942-81-4870	Steel frame 3 story	9,700						9,700

*Temperature controlled warehouse: Warehouse that is able to maintain a certain temperature (10~20°C)

Warehouses / Centers (Domestic)

As of Apr. 1, 2024

Name	Address	Tel	Dimensions (㎡)
Konoike Transport Co., Ltd. Engineering factories			
Wakayama Engineering Factory	1850 Minato, Wakayama Inside Kansai Works Wakayama Area, Nippon Steel Corporation 640-8555	073-455-3366	2,000
Yawata Engineering Factory	1-3-25 Higashiminato, Kokurakita-ku, Kitakyusyu 803-0802	093-562-6820	600
Kashima Engineering Factory	2279-6 Hirai, Kashima, Ibaraki 314-0012	0299-84-6455	4,300
Chubu Nagoya Office	1-36-1 Kanseicho, Minato-ku, Nagoya 455-0066	052-651-7126	800
Toyohashi Office	3-14-20 Honohara, Toyokawa, Aichi 442-0061	0533-85-5611	1,200
Hokuriku Office	282 Takaki, Imizu, Toyama 934-0047	0766-82-2223	500
Techno Service Osaka Office	4-14-34 Tsurumachi, Taisho-ku, Osaka 551-0023	06-6555-7670	2,500
Techno Service Soka Office	2-4-38 Hanaguri, Soka, Saitama 340-0044	048-921-8600	3,300
TechnoLogis Makuhari	2-3-1 Shibazono, Narashino, Chiba 275-0023	047-409-4600	23,300

Food Processing factory

Osaka Kizu Factory	2-2-8 Shikitsu Higashi, Naniwa-ku, Osaka 556-0012	06-6630-6155	1,000
--------------------	---	--------------	-------

Warehouses / Centers (Domestic group companies)

As of Apr. 1, 2024

Name	Address	Tel	Dimensions (㎡)
Konoike Medical Co., Ltd.			
Sapporo Office (Sapporo Logistics·Washing Center)	1-9-3 Higashi, Minami 6-jo, Chuo-ku, Sapporo, Hokkaido 060-0056	011-511-8883	200
Akita Office (Akita Sterilization Center)	11-1 Iwakifutago-mukaimura, Yurihonjo, Akita 018-1305	0184-73-3221	1,000
Miyagi Office (Miyagi Sterilization Center)	3-8-2 Yoshiokahigashi, Taiwacho, Kurokawa, Miyagi 981-3627	022-345-5511	800
Tochigi Office (Tochigi Sterilization Center)	62-3 Hagadai, Hagamachi, Haga, Tochigi 321-3325	028-677-1215	1,000
Saitama Office (Saitama Sterilization Center)	3-5-24 Nizominami, Toda, Saitama 335-0026	048-430-4555	1,000
Chiba Office (Chiba Sterilization Center)	8-6 Goi-minamikaigan, Ichihara, Chiba 290-0045	0436-24-6301	900
Tokyo Office (Tokyo Sterilization Center)	5-9-12 Tachibana, Sumida-ku, Tokyo 131-0043	03-3613-1691	1,300
Tokyo Logistics Office(Tokyo Logistics·Washing Center)	1-5-21 Katsushima, Shinagawa-ku, Tokyo 140-0012	03-5753-3151	18,290
Yokohama Office	2-2-15 Shinyokohama, Kouhoku-ku, Yokohama 222-0033	045-476-2650	20
Nagoya Office	2-14-19 Meiekiminami, Nakamura-ku, Nagoya 450-0003	052-686-0012	700
Nagoya Office (Ichinomiya Sterilization Center)	1-11-30 Denpoji, Ichinomiya, Aichi 491-0822	0586-76-8222	600
Osaka Office (Osaka Sterilization Center)	3-59 Hamaderafunaocho-nishi, Nishi-ku, Sakai 592-8342	072-261-2750	700
Osaka Logistics Office (Osaka Logistics·Washing Center)	ATC 2-1-10 Nanko-kita, Suminoe-ku, Osaka 559-0034	06-4703-5286	3,344
Hyogo Office (Hyogo Washing Center)	1957-1 Okashita, Nishifutamiaza, Futamicho, Akashi, Hyogo 674-0094	078-942-7638	300

Warehouses / Centers (Domestic group companies)

As of Apr. 1, 2024

Name	Address	Tel	Dimensions (㎡)
Hiroshima Office (Hiroshima Sterilization Center)	3-74-25 Minamimyojinmachi, Kaitacho, Aki, Hiroshima 736-0055	082-824-1551	1,000
Kanmon Office (Kanmon Sterilization Center)	1-43-56 Chofusaigawa, Shimonoseki, Yamaguchi 752-0928	0832-49-2277	1,300
Fukuoka Logistics Office (Fukuoka Logistics · Washing Center)	Hakkou Distribution Center, 7nd floor, 8-5-75 Yoshizuka, Hakata-ku, Fukuoka 812-0041	092-627-1681	2,500

Kyushu Sanko Unyu Co., Ltd.

Kyushu North Branch	1450-1 Ogoori, Ogoori-shi, Fukuoka 838-0141	0942-72-4131	—
Nakakyushu Center (Kyushu North Branch)	1450-1 Ogoori, Ogoori-shi, Fukuoka 838-0141	0942-72-4131	25,200
Strage Room	2-20-3 Ryutsudanchi, Minami-ku, Kumamoto 862-8635	096-377-2435	1,800
Kyushu Sorth Branch	2526 Fukasako, Hirata, Mashiki-machi, Kamimashiki-gun, Kumamoto 861-2212	096-388-2731	1,000
Kumamoto Food Center (Kyushu Sorth Branch)	2-20-3 Ryutsudanchi, Minami-ku, Kumamoto 862-8635	096-334-7111	800

Warehouses / Centers (Domestic group companies)

As of Apr. 1, 2024

Name	Address	Tel	Structure	Dimensions (m ²)							
				Dry	Chilled	Frozen	Automated	Temp-Cntl	Total		
Japan Airways Co., Ltd.											
Tokyo Distribution Center	1-5-21 Katsushima, Shinagawa-ku, Tokyo 140-0012	03-5762-7013	Steel frame 6 story	3,100	100	100				3,300	
Osaka Chuo Office	1-27-20 Nishikujo, Konohana-ku, Osaka 554-0012	06-6461-4551	Steel frame 6 story	1,500						1,500	
Kansai Airport Center	5-6 Rinkuoraikita, Izumisano, Osaka 598-0048	072-458-2381	Steel frame 1 story	1,900	100					2,000	
Fukuoka Airport Center	3-22-31 Higashihie, Hakata-ku, Fukuoka 812-0007	092-474-4411	Steel frame 4 story	700						700	
Kanriku Co., Ltd.											
Takamatsu Office (Takamatsu Distribution Center)	121-20 Showa, Sanuki, Kagawa 769-2304	0879-24-9101	Steel frame 1 story	12,800						12,800	
Sakaide Office	4285-315 Hayashidacho-banyamae, Sakaide, Kagawa 762-0012	0877-47-2138	Steel frame 1 story	10,500						10,500	
Matsuyama Grocery Center	2882-5 Minamigata, Toon, Ehime 791-0301	089-966-1516	Steel frame 3 story	32,800	900					33,700	
Osaka Distribution Office	2-13-5, Nakashima, Nishiyodogawa-ku, Osaka 550-0041	06-6475-2005	RC 4 story (part of the 3rd floor)	900						900	
Ouchida Warehouse	725 Ouchida, Kita-ku, Okayama, Okayama 701-0165	086-293-5721	Some steel frame, 2 story	6,200					3,900	10,100	
Hayashima Warehouse	783-2 Yao, Hayashimacho, Tsukubo, Okayama 701-0301	086-293-5261	Steel frame 2 story	3,100	900	700			1,300	6,000	
Sano Unyu Co., Ltd.											
Maya Distribution Center	Maya distribution center East building, Maya futo, Nada-ku, Kobe 657-0854	078-805-6155	Steel frame 1 story	4,000						4,000	
Kobe koto Port Transportation Cooperative Association	Minatojimamachi-3chome, Chuo-ku, Kobe 650-0045	078-303-0061	Steel frame 2 story	6,000						6,000	

*Temperature controlled warehouse: Warehouse that is able to maintain a certain temperature (10~20°C)

Warehouses / Centers (Overseas group companies)

As of Apr. 1, 2024

Name	Name of Warehouse	Structure	Dimensions (m ²)				
			Dry	Chilled	Frozen	Temp-Cntl	Total
Konoike-Pacific California, Inc.	KPC	Rack Support Type		2,700	8,500		11,200
Konoike-General, Inc.	KGI South Gate	Rack Support Type		2,000	5,100		7,100
Konoike-E Street, Inc.	KES	Rack Support Type		800	7,100		7,900
Konoike Transport & Engineering (H.K.) Ltd.	Tuen Mun Warehouse	RC 21 story	2,600				2,600
Qingdao Cosco Konoike Logistics Co., Ltd.	Qingdao Cosco Konoike Logistics Co.,Ltd.	RC		1,400	2,900		4,300
	Chengyang district Domestic Warehouse	High floor type 1 story	6,800				6,800
Konoike Logistics (Shanghai) Co., Ltd.	Waigaoqiao Baoshuiqu Warehouse (bonded)	Steel frame 1 story	4,400				4,400
Konoike Asia (Jiangsu) Co., Ltd.	Temperature-Controlled Logistics Center	Steel frame 1 story				8,600	8,600
BEL International Logistics Ltd.	Transhore Warehouse Transportation Co., Ltd.	RC	2,000				2,000
BEL Supply Chain Solutions Ltd.	BELSCS Mita	RC	1,332				1,332
	Frozen Refrigerated Warehouse	All high floor type warehouse		300	700		1,000
Konoike Vinatrans Logistics Co., Ltd.	Dry Warehouse (Head office)	Steel frame 1 story	3,000				3,000
	DC Center Warehouse (for Family Mart)	Steel frame 1 story	3,100				3,100
	Hai Duong Bonded Warehouse (Phuc dien)	All high floor type warehouse	3,400			700	4,100
	Hai Duong Normal Warehouse (Phuc dien)	All high floor type warehouse	7,300				7,300
	Dinh Vu Dry Warehouse (Hai Phong)	All high floor type warehouse	1,800				1,800
	JVI Warehouse (Tanh Hoa)	Steel frame 1 story	5,000				5,000
	Da Nang Dry Warehouse (Da Nang)	Steel frame 1 story	3,500				3,500
Ba Ria Dry Warehouse (Baria Bung Tau)	Steel frame 1 story	1,200				1,200	

*Temperature controlled warehouse: Warehouse that is able to maintain a certain temperature (10~20°C)

Warehouses / Centers (Overseas group companies)

As of Apr. 1, 2024

Name	Name of Warehouse	Structure	Dimensions (m ²)				Total
			Dry	Chilled	Frozen	Temp-Cntl	
Anpha-AG Joint Stock Company	ANPHA-AG	Steel frame 1 story		1,500	8,000		9,500
Konoike Transport & Engineering (S) Pte.Ltd.	Senoko Food Warehouse	RC				1,000	1,000
	Pioneer Warehouse	RC	1,800				1,800
Konoike Asia (Thailand) Co., Ltd.	KAT Bang-Na DC	RC	3,000				3,000
Konoike Cool Logistics (Thailand) Co., Ltd.	KCLT	Steel frame 1 story		4,600	3,800	1,500	9,900
Konoike Myanmar Co., Ltd.	KMC	Steel frame 1 story	2,500				2,500

*Temperature controlled warehouse: Warehouse that is able to maintain a certain temperature (10~20°C)

Business license, permission, and registration (Domestic)

As of Apr. 1, 2024

Konoike Transport Co., Ltd.

Classification	Name of licence, permission, and registration	
Food	Food sales and marketing	
	Port transportation business	
	Port worker dispatch business	
	Ocean transportation business (overseas shipping)	
	General cargo truck transportation business	
	Type 1 cargo transportation business	
	Type 2 cargo transportation business	
	Specified air cargo transportation business	
	Air cargo transport agency business	
	Warehouse business	
	Bonded warehouse	
	Customs clearance business	
	Engineering	General construction business
		Type 1 Fluorocarbons collections business
	Worker dispatch	Worker dispatch
Designation of export/import inspection location for livestock products		
Meat sales business		
Managed care instrument sales business		
Specially controlled medical devices sale/lease		
Medical equipment manufacturing industry		
Quasi drug manufacturing business		
Cosmetics manufacturing business		
Automobile dismantle and maintenance business		
Industrial wastes collections and transportation business		
Other	Oil distribution business	
	Secondhand store	
	Specified letter delivery business	
	Forklift truck operation skills training: registered training institution	
	Inspection agent: registered	
	Matal scrap industry	

Business license, permission, and registration (Domestic)

As of Apr. 1, 2024

Konoike Medical Co., Ltd.

Classification	Line of Business
Truck transportation	Type 1 cargo transportation business
Worker dispatch	Worker dispatch business
Other	Medical equipment manufacturing industry (registered)
	Third-class medical device manufacturing and sales license
	Advanced medical management device sales and rental (licensed)
	Medical equipment repair business (licensed)
	Medical management device sales (notified)
	Pharmaceutical wholesale (licensed)
	Cosmetics manufacturing (licensed)
	Hospital cleaning
	Hospital sterilizing
Sterilizing outside hospital	

Kyushu Sanko Unyu Co., Ltd.

Classification	Line of Business
Air cargo / Rail cargo transportation / Coastal transportation	Type 2 cargo transportation business
	Customs clearance business
Truck transportation	General cargo truck transportation business
	Light cargo transportation business
Warehouse	Warehouse business
	Industrial waste disposal business
Industrial waste	Specially controlled industrial waste collections and transportation business
Worker dispatch	Worker dispatch business
Other	Specified letter delivery business
	Medicinal products wholesale trade
	Medicinal products for animals wholesale trade
	Chilled or freeze food business

Japan Airways Co., Ltd.

Classification	Line of Business
Air cargo / Rail cargo transportation / Coastal transportation	Type 2 cargo transportation business
	Air cargo transport agency business
Truck transportation	Type 1 cargo transportation business
	General cargo truck transportation business
	Light cargo transportation business
Warehouse	Warehouse business
Industrial wastes	Industrial wastes collections and transportation business
Other	Travel agency
	Specified letter delivery business

Kanriku Co., Ltd.

Classification	Line of Business
Truck transportation	General cargo truck transportation business
	Type 1 cargo transportation business
	Type 2 cargo transportation business
	Light cargo transportation business
	Customs clearance business
Warehouse	Warehouse business
	Bonded warehouse
Industrial wastes	Industrial wastes collections and transportation business
Worker dispatch	Worker dispatch business
Employment agency	Fee charging employment agency
Other	Measuring certification business

Business license, permission, and registration (Domestic)

As of Apr. 1, 2024

Konoike Air Port Service Co., Ltd.

Classification	Line of Business
Truck transportation	Type 1 cargo transportation business
	Type 2 cargo transportation business
Other	Business rights at Kansai International Airport
Worker dispatch	Worker dispatch business

Konoike Sky Support Co., Ltd.

Classification	Line of Business
Worker dispatch	General worker dispatch business
Other	Business rights at Tokyo International Airport

K Sky Co., Ltd.

Classification	Line of Business
Ground Service	Business rights at Kansai International Airport
	Business rights at Tokyo International Airport
Worker dispatch	Worker dispatch business

K Ground Service Co., Ltd.

Classification	Line of Business
Air cargo transportation	Customs clearance business
	Bonded warehouse
	Business rights at Kansai International Airport
	Business rights at Tokyo International Airport
Worker dispatch	Worker dispatch business
Other	Antiques business

K Ground Expert Co., Ltd.

Classification	Line of Business
Worker dispatch	Worker dispatch business
Other	Antiques business

Japan Airport Service Co., Ltd.

Classification	Line of Business
Ground handling service	Business rights at Narita International Airport

Airport Terminal Service Co., Ltd.

Classification	Line of Business
Ground Service	Business rights at Narita International Airport
Worker dispatch	Worker dispatch business
Employment agency	Fee charging employment agency

Air Express, Inc.

Classification	Line of Business
Worker dispatch	Worker dispatch business

Business license, permission, and registration (Domestic)

As of Apr. 1, 2024

Eco Innovation Inc.

Classification	Line of Business
Industrial waste	Industrial waste disposal business
	Specially controlled industrial waste disposal business
	Industrial waste collections and transportation business
	Specially controlled industrial waste collections and transportation business
Worker dispatch	Worker dispatch business
Other	Scrap metal sales

ASR Recycling Kashima Co., Ltd.

Classification	Line of Business
Waste	Industrial waste disposal business
	General waste disposal business

Konoike Express Co., Ltd.

Classification	Line of Business
Truck transportation	General cargo truck transportation business
	Type 1 cargo transportation business
Industrial waste	Industrial waste collections and transportation business
	Specially controlled industrial waste collections and transportation business
Other	Specified automobile maintenance business

Konoike Shipping Co., Ltd.

Classification	Line of Business
Ocean transportation	Type 1 cargo transportation business
Truck transportation	Type 1 cargo transportation business

Sano Unyu Co., Ltd.

Classification	Line of Business
Ocean / Air cargo transportation	Port transportation business
	Customs clearance business
Truck transportation	Type 1 cargo transportation business

Konohana Transport Co., Ltd.

Classification	Line of Business
Truck transportation	General cargo truck transportation business
	Type 1 cargo transportation business
Engineering	Construction business

Chuden Sangyo Co., Ltd.

Classification	Line of Business
Worker dispatch	Worker dispatch business
Industrial waste	Industrial waste collections and transportation business
Engineering	Construction business

Business license, permission, and registration (Domestic)

As of Apr. 1, 2024

Nichiun Co., Ltd.

Classification	Line of Business
Ocean / Air cargo transportation	Port transportation business
	Customs clearance business
Truck transportation	Type 1 transportation business

NBS Inc.

Classification	Line of Business
Worker dispatch	Worker dispatch business

Konoike Corporate Service Co., Ltd.

Classification	Line of Business
Truck transportation	Type 1 cargo transportation business
Engineering	Building environment and sanitation management business
Worker dispatch	Worker dispatch business
Other	Security business
	Antiques business
	Scrap metal sales
	Building insect control business
	Hospital cleaning
	Building Drinking Water Storage Tank Cleaning

Chiyoda Inspection Industries Co., Ltd.

Classification	Line of Business
Engineering	Type C nondestructive inspection business
Other	Measurement certification business

Business license, permission, and registration (Overseas)

As of Apr. 1, 2024

Konoike-Pacific California, Inc.

Classification	Line of Business
Truck transportation	Licensed for California truck business(CA#0296554)
Warehouse / Food	USDA specification inspection place FDA registered(BIOTERRORISM ACT)

Konoike Transport & Engineering (USA), Inc.

Classification	Line of Business
Ocean cargo transportation	NVOCC* ¹ (FMC LICENCE #16977N)

Konoike-General, Inc.

Classification	Line of Business
Warehouse	Warehouse business (frozen and chilled)

Konoike-E Street, Inc.

Classification	Line of Business
Warehouse	USDA specification inspection place Warehouse business (frozen and chilled)

Konoike Transport & Engineering (H.K.) Ltd.

Classification	Line of Business
Ocean cargo transportation	Transport & Warehouse business
Truck transportation	
Warehouse / Dry	
Food Importer/Food Distributor	

Konoike Logistics (Shenzhen) Co., Ltd.

Classification	Line of Business
Ocean cargo transportation	NVOCC* ¹
Truck transportation	International cargo transportation agency outside bond district
Warehouse / Dry	Warehouse business at bonded area
Engineering	Licensed for facility installation and maintenance
International trade	International trade business

Qingdao Cosco Konoike Logistics Co., Ltd.

Classification	Line of Business
Ocean cargo transportation	NVOCC* ¹
Warehouse / Food	Warehouse business at part of bonded area

Konoike Logistics (Shanghai) Co., Ltd.

Classification	Line of Business
Ocean cargo transportation	NVOCC* ¹
Warehouse / Dry	Bonded warehouse business
International trade	International trade business
Truck transportation	Dry cargo transportation / Chilled cargo transportation International cargo transportation agency Licensed for truck transport of bonded cargo authorized by the Customs
Engineering	Licensed for facility installation and maintenance

*¹ NVOCC: Business licensed as a non vessel operating common carrier.

Business license, permission, and registration (Overseas)

As of Apr. 1, 2024

Konoike Asia (Jiangsu) Co., Ltd.

Classification	Line of Business
Ocean cargo transportation	Forwarding business
Warehouse / Dry	Warehouse business
Truck transportation	Dry cargo transportation / Chilled cargo transportation International cargo transportation agency
Engineering	Licensed for facility installation and maintenance

Konoike Vinatrans Logistics Co., Ltd.

Classification	Line of Business
Ocean cargo transportation	NVOCC※1
Truck transportation	Ground transportation business (Dry/Child/International cargo)
Warehouse / Food	Warehouse business
Engineering	Construction and Installation and Maintenance

BEL International Logistics Ltd.

Classification	Line of Business
Air cargo transportation	IATA Air Transport Sales Agency Services 1st category Radio dealers license
Ocean cargo transportation	NVOCC※1, FIATA
Warehouse / Dry	Bonded warehouse business
Truck transportation	Warehouse business at part of bonded area

Anpha-AG Joint Stock Company

Classification	Line of Business
Warehouse / Food	Warehouse business
Transportation	Track Agency Licence
Machinery process	Manufacturing and processing of machinery
Food process	Food process
Construction	Construction and Install of machinery

PT.Konoike Transport Indonesia

Classification	Line of Business
Ocean cargo transportation	Forwarding business

Vinako Forwarding Co., Ltd.

Classification	Line of Business
Air cargo transportation	IATA Agent license

※1 NVOCC: Business licensed as a non vessel operating common carrier.

Business license, permission, and registration (Overseas)

As of Apr. 1, 2024

Konoike Transport & Engineering (S) Pte. Ltd.

Classification	Line of Business
Ocean cargo transportation	NVOCC※ ¹ Warehouse / SFA License
Warehouse / Food	Halal License, AVA license, SFA License

Konoike Asia (Thailand) Co., Ltd.

Classification	Line of Business
Ocean cargo transportation	NVOCC※ ¹
Truck transportation	Ground transportation business
Air cargo transportation	IATA Agent license
AEO Customs broker license	Import and Export customs clearance business

Konoike Cool Logistics (Thailand) Co., Ltd.

Classification	Line of Business
Warehouse	Warehouse business

Konoike Express (Thailand) Co., Ltd.

Classification	Line of Business
Truck transportation	Ground transportation business

Konoike Myanmar Co., Ltd.

Classification	Line of Business
Ocean cargo transportation	Investment approval of Thilawa SEZ management committee
Air cargo transportation	NVOCC※ ¹
Truck transportation	Myanmar international freight forwarders' certificate of membership
Warehouse / Dry	Warehouse business

Konoike-EURO Logistics (Bangladesh) Ltd.

Classification	Line of Business
Ocean cargo transportation	NVOCC※ ¹
Truck transportation	Ground transportation business
Air cargo transportation	IATA Agent license

Joshi Konoike Transport & Infrastructure Pvt. Ltd.

Classification	Line of Business
Container train operator	Container train operator
Automobile Freight Train Operator	Automobile Freight Train Operator

※¹ NVOCC: Business licensed as a non vessel operating common carrier.

Lists of Certifications

As of Apr. 1, 2024

Acquired Green Management Certifications

Created by the Ministry of Land, Infrastructure, Transport and Tourism, this is a system that awards certifications to businesses that work above a set level of environmental conservation standards.

Truck

Konoike Transport Co., Ltd.	36 places
Group	5 places

Warehouse

Group	1 place
-------	---------

Certified Offices made excellent records on Safety standard

The certification is a program administered by the Japan trucking association, Organization for the standardization of truck cargos in Japan which reviews and certifies the safety of each truck transportation company and offers consumers and cargo companies a system in which they are able to choose a safe trucking company. This increases the overall safety awareness of the industry.

High safety certified office certification

Konoike Transport Co., Ltd.	60 places
Group	39 places

Lists of Certifications

As of Apr. 1, 2024

Acquired ISO

<ISO 22000 / Food safety >

Beverage distribution

Konoike Transport Co., Ltd.	1 place
-----------------------------	---------

<ISO 14001 / Environment>

Environmental & Engineering

Group	3 places
-------	----------

<ISO 13485 / Medical devices>

Healthcare

Group	2 places
-------	----------

<ISO 27001/ Security>

Information Security

Konoike Transport Co., Ltd.	1 place
-----------------------------	---------

Group	2 places
-------	----------

<ISO 9001 / Quality management systems>

Quality management systems

Group	5 places
-------	----------

History of Konoike Transport Co., Ltd.

As of Apr. 1, 2024

1880 Group founder Chujiro Konoike opens a worker placement and transport business in what is now Konohana Ward, Osaka as a private merchant.

1900 Begins onsite cargo handling and transport operations at client steelworks.

1945 Establishes Konoike Transport Co., Ltd.

1951 Begins in-factory contract operations for the food industry.
Registers as port transport service operator following passage of Port Transportation Business Act.

1962 Starts warehousing operations.

1963 Enters maritime cargo transport business.

1970 Starts industrial waste disposal business.

1975 Kashimasenko Co., Ltd.'s (Current Eco Innovation Inc.) No. 1 Resource Recycling Furnace completed.

1979 Starts air cargo transport business.

1980 100 years anniversary since start of business.

1984 Expands to Singapore.

1985 Expands to U.S.A..
Expands to China.
Starts Temperature-Controlled Logistics Services.

1991 Establishes Konoike Air Port Engineering Co., Ltd.(Current Konoike Air Port Service Co., Ltd.) and begins the Airport-Related Services.

1993 Becomes the first Japanese distribution company established in Viet Nam.

1994 Establishes MSS North Kanto (Current Konoike Medical Co., Ltd.) and launches Medical-Related Services.
Begins onsite operations at Kansai International Airport (airport-related business).

1998 Acquires first ISO9002:1994 certification at Tonegawa distribution center(Current Kitakanto Distribution Center).

2000 Acquires first ISO14001:1996 certification at Tonegawa distribution center(Current Kitakanto Distribution Center).

2001 Expands to Philippines.
Expands to Indonesia.

2008 Expands to India.

2009 Expands to Thailand.
Kashimasenko Co., Ltd.'s (Current Eco Innovation Inc.) No. 2 Resource Recycling Furnace completed.
Becomes the first Japanese distribution company established in Bangladesh.

2010 130 years anniversary since start of business.
Acquires JAL subsidiaries as a Group. Expands the Airport-Related Services(K Ground Service Co., Ltd., K Sky Co., Ltd., K Ground Expert Co., Ltd.).

2011 Establishes Konoike Techno Training Center in Osaka.

2012 Expands to Myanmar.

2013 Officially listed on the First Section of the Tokyo Stock Exchange.

2014 Establishes a collaborative investigation lecture with Graduate Schools of Osaka University.
Expands to Mexico.
Kyushu Sanko Unyu Co., Ltd. becomes subsidiary company
Establishes Safety/Quality Training Center in Chiba.

2015 Acquires first ISO22000:2005 certification at Kitakanto Distribution Center.

2017 On the occasion of its relocation, the Tokyo regional head office has been renamed Tokyo head office.
NKS Holding Co., Ltd. (Current Konoike Air Holding Co., Ltd.) becomes subsidiary company.
Starts CTO (Container train operator) business in India.

2018 NBS Inc. becomes subsidiary company.
Establishes Konoike IT Solutions Co., Ltd.

2019 Chuden Sangyo Co., Ltd. becomes subsidiary company.
Starts AFTO (Automobile freight train operator) business in India.
Establishes a food processing factory at Osaka Kizu Wholesale Market.
Formulating the English version of Our Brand.
Mr.Takashi Tsuji, (then) Director and Chairman of Konoike Transport Co., Ltd. was awarded The Order of the Rising Sun, Gold Rays with Neck Ribbon.

2020 Air Express, Inc. becomes subsidiary company.
140 years anniversary since start of business.

2021 Establishes Konoike Institute of Technology Innovation Center in the "Tokyo Rail Gate WEST".
Develops the Sustainability Basic Policy.
Establishes the Sustainability Committee.

2022 Moved to the new "Prime Market" segment of the Tokyo Stock Exchange.
Establishes SHINE Co., Ltd.
Formulating the "KONOIKE 2030 VISION"

2023 Starts operations of Konoike Air Holding Co., Ltd.



KONOIKE



Web site



<https://www.konoike.net/en/>

Brand Site



<https://www.konoike.net/brand/en/>



Web Site



Brand Site